

# Getting Started with the SAP S/4HANA 2020 (SP00) Fully-Activated Appliance



---

# Table of Contents

1	Appliance Template Information.....	4
1.1	Introduction .....	4
1.2	Installed Products .....	5
1.3	Business Scenarios & Localizations .....	6
1.4	ABAP client structure & business users .....	7
1.5	Post-installation Steps & Sample Demo Walkthroughs .....	8
1.6	More Information & Support .....	9
1.6.1	More Information .....	9
1.6.2	Support .....	9
2	Accessing the Appliance Template .....	10
2.1	Overview .....	10
2.2	Option 1: System access via embedded Windows Remote Desktop frontend server .....	10
2.3	Option 2: System access via local PC.....	12
2.3.1	Mapping your local <i>/etc/hosts</i> file .....	12
2.4	Users & passwords for the system components.....	13
2.4.1	SAP S/4HANA ABAP application server.....	13
2.4.1.1	Pre-configured business users in SAP S/4HANA .....	13
2.4.1.2	Administrative data & users for SAP S/4HANA.....	14
2.4.2	SAP HANA DB server .....	15
2.4.3	Java Application Server.....	16
2.4.4	SAP BusinessObjects BI platform .....	17
2.4.5	Windows Frontend Server Details .....	17
2.4.6	Accessing Your Appliance on Linux Level.....	18
2.5	Optional: Get your own fully-qualified domain name & SSL certificate .....	18
3	Licenses & Fees .....	19
3.1	First 30 days: Running your appliance as trial.....	20
3.2	Beyond 30 days: Running your appliance with SAP licenses.....	20
3.2.1	SAP Cloud Appliance Library subscription .....	20
3.2.2	SAP product licenses.....	21
3.2.2.1	SAP S/4HANA.....	21
3.2.2.2	Optional: SAP BusinessObjects BI Platform licenses .....	21

---

3.2.3	License key installation in your appliance.....	22
4	Security Aspects in SAP Cloud Appliance Library.....	24
4.1	Internet ports for accessing your system.....	24
4.2	Network security considerations .....	25
4.3	ABAP user roles and profiles .....	25
4.4	Certificates .....	25
5	Appliance Template Provisioning in SAP Cloud Appliance Library .....	26
6	Appendix .....	27
6.1	Installed Technical Component Details .....	27
6.1.1	SAP NetWeaver 7.55 application server ABAP incl. SAP S/4HANA 2020 SP00 .....	27
6.1.2	SAP NetWeaver 7.50 application server JAVA with Adobe Document Services installed.....	32
6.1.3	Windows Remote Desktop .....	33
6.1.4	SAP BusinessObjects BI Platform 4.2 .....	33

---

# 1 Appliance Template Information

## 1.1 Introduction

This guide provides information about the “SAP S/4HANA 2020 SP00 Fully Activated Appliance” on SAP Cloud Appliance Library (SAP CAL, <https://cal.sap.com> ).

The appliance template contains an SAP S/4HANA 2020 (SP00, initial shipment) system with pre-configured SAP Best Practices and demo scenarios.

It can be rapidly brought up as your personal appliance with administrative rights either hosted in dedicated cloud providers such as Amazon, MS Azure or Google Cloud Platform (in ~2 hours) or on-premise on your own hardware (in ~2-3 days).

Typical use cases are trial system, sandboxing, proof-of-concept, or scoping exercises.

The usage as a development system in implementation projects is not recommended since the appliance template might contain components and configuration settings (some with a separate license) that are conflicting with the later deployment in a quality or production system.

A **general introduction** into the appliance template and the usage as trial or sandbox system can be found on <https://blogs.sap.com/?p=727457>

**Known issues** will be continuously updated in this blog: <https://blogs.sap.com/?p=1215356>

**Post-installation steps and extensive demo guides** with sample walkthrough scenarios can be found here: <https://blogs.sap.com/2019/04/23/sap-s4hana-fully-activated-appliance-demo-guides/>.

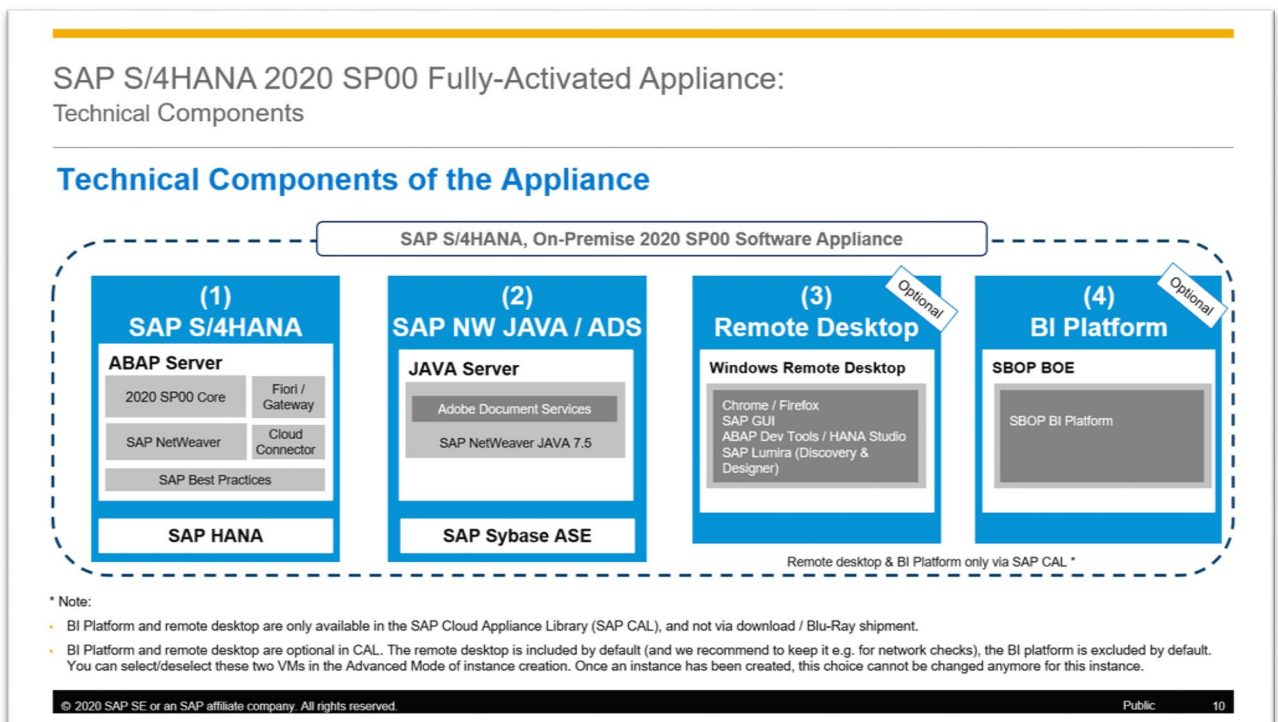
**Video tutorials** how to create an AWS account and how to launch the appliance can be found [here](#).

They might not necessarily show the creation of the SAP S/4HANA 2020 appliance (but another SAP appliance template), however, the concepts are the same.

## 1.2 Installed Products

When you deploy the appliance (either in Cloud Appliance Library or your own on-premise hardware), you get access to a system landscape that has been built using the following components (see picture below).

1. SAP NetWeaver 7.55 application server ABAP incl. SAP S/4HANA 2020 (SP00)
2. SAP NetWeaver 7.50 application server JAVA with installed Adobe Document Services.
3. Optional: Microsoft Windows Server 2016 (as remote desktop) for easy frontend access.
4. Optional: SAP BusinessObjects BI Platform 4.2 SP7



### Notes:

- The virtual machines (VMs) for the BI Platform and the remote desktop (RDP) are optional in Cloud Appliance Library. You can deselect these two VMs in the Advanced Mode of the appliance creation. Once an appliance has been created, this choice cannot be changed anymore for this appliance.
- The BI Platform and the remote desktop are only available when using SAP Cloud Appliance Library as described in this document. However, you can also receive the appliance template for installation on your own on-premise hardware but in that case BI platform and remote desktop are not included. Please see SAP Note [2041140](#) for the option to install the appliance template on your own hardware.

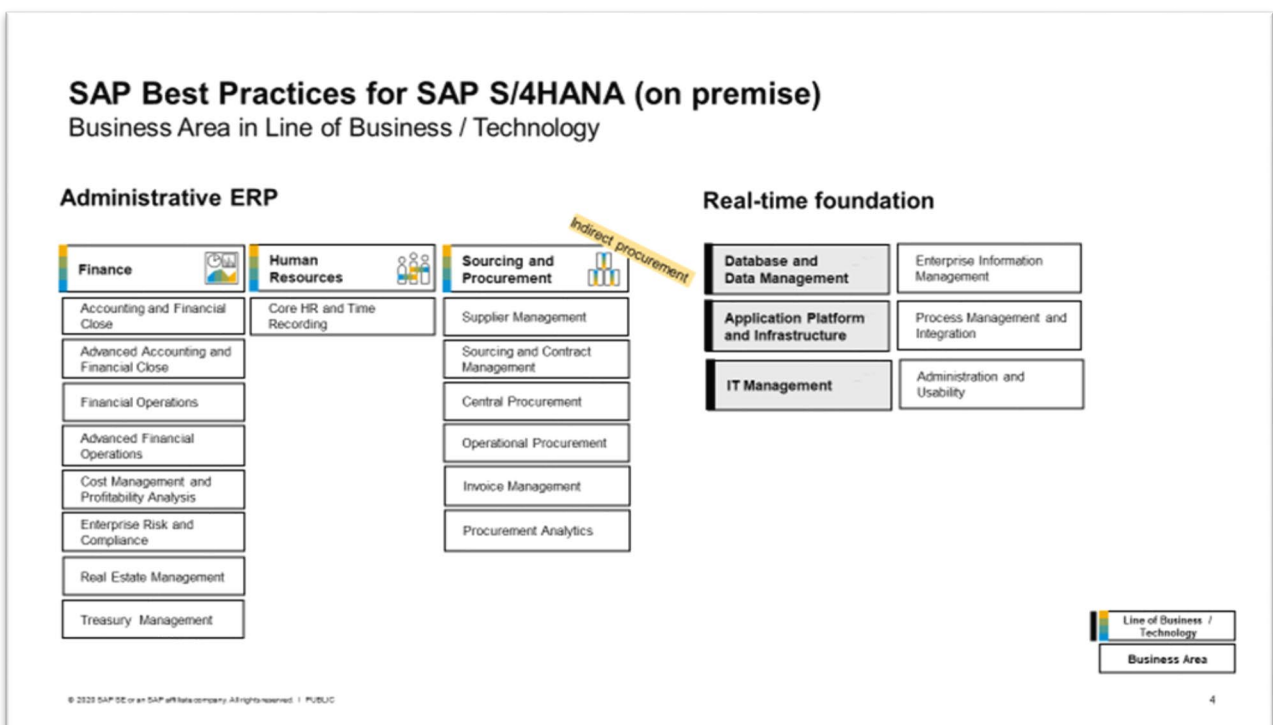
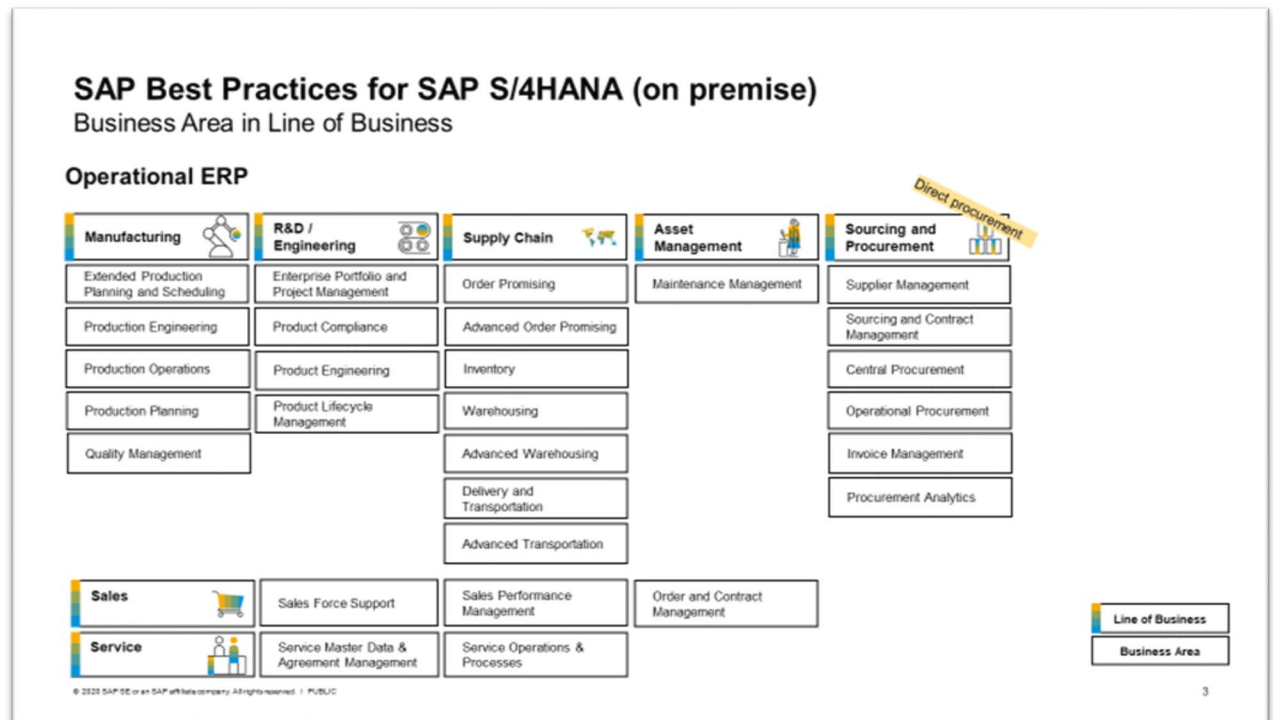
A detailed component list of the appliance template can be found in the appendix of this guide.



## 1.3 Business Scenarios & Localizations

The appliance template uses SAP Best Practices as main business content.

The charts below summarize the Best Practices scope for SAP S/4HANA 2020 (details can be found on [https://rapid.sap.com/bp/BP\\_OP\\_ENTPR](https://rapid.sap.com/bp/BP_OP_ENTPR)).



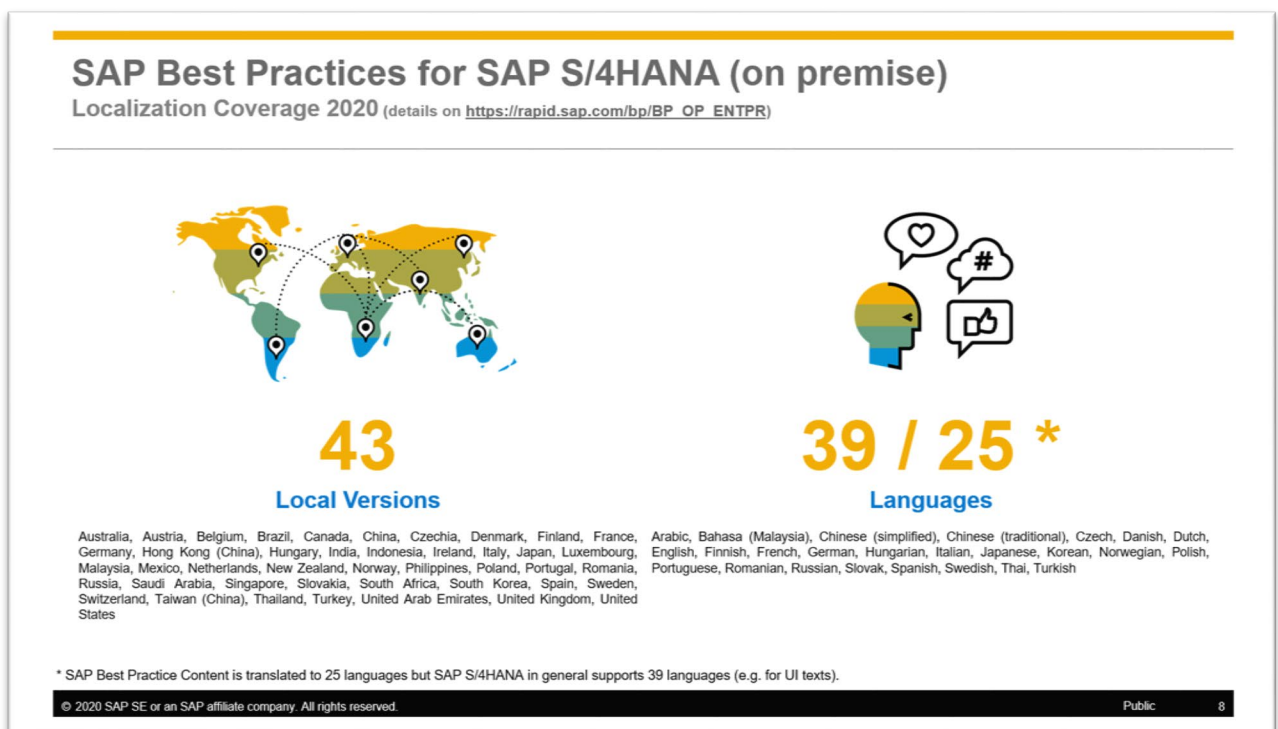
In the appliance template, the Best Practices have been fully activated, however, there are still areas that require additional configuration to be fully functional.

The integration into other SAP products or 3<sup>rd</sup> party software is such an example where you need to specify at least the credentials (tenant, account, etc.) of the integration target.

The SAP Best Practices configuration content of SAP S/4HANA 2020 is available for 43 countries/regions and 25 languages: *Arabic, Bahasa (Malaysia), Chinese (simplified), Chinese (traditional), Czech, Danish, Dutch, English, Finnish, French, German, Hungarian, Italian, Japanese, Korean, Norwegian, Polish, Portuguese, Romanian, Russian, Slovak, Spanish, Swedish, Thai, Turkish*

In the appliance template, all available localizations are activated (see the section *ABAP client structure & business users* later in this guide), however, the suggested demo walkthroughs (incl. demo data) in the appliance are configured for USA only (using company code 1710).

Besides the aforementioned languages for SAP Best Practices, further language packages are installed in the system, but the configuration content might not be fully translated into those.



## 1.4 ABAP client structure & business users

Multiple ABAP clients are configured in the appliance template.

- 000 serves as standard delivery client (as usual in on-premise deployments)

- 100 is the primary demo client that contains the pre-configured scenarios and sample data.
- 200 can be used to experience the activation of SAP Best Practices on your own (see the [SAP Best Practices implementation guide](#) for details)
- 400 contains the activated Best Practices based on the white-list approach

## SAP S/4HANA 2020 Fully-Activated Appliance

What client is used for what ?

ABAP Client	Description
<b>100</b> Trial & exploration client (merged-000-client **)	<ul style="list-style-type: none"> <li>• Pre-activated SAP Best Practices for SAP S/4HANA 2020 (Germany &amp; US, demo flow localized for US)</li> <li>• Additional configuration for end-to-end sample business process</li> <li>• Customizing and transactional data in US company code (1710)</li> <li>• SAP Fiori Apps</li> <li>• Based on the merged-client approach</li> </ul>
<b>200</b> Ready-to-Activate client (white list **)	<ul style="list-style-type: none"> <li>• Technical preparation activities prior to Best Practices content activation done</li> <li>• No SAP Best Practices activations done yet</li> <li>• Use case: sandbox for activating customer-specific SAP Best Practices scope</li> </ul>
<b>400</b> SAP Best Practices reference client (white list **)	<ul style="list-style-type: none"> <li>• Full copy of client 000 customizing, with SAP S/4HANA 2020 Best Practices activation (43 localizations*)</li> <li>• This is the standard delivery state of Best Practices (no additional configuration, no corrections applied)</li> </ul>

(\*) There are 43 localizations contained in the SAP S/4HANA 1909 Best Practices:

Australia, Austria, Belgium, Brazil, Canada, China, Czechia, Denmark, Finland, France, Germany, Hong Kong, Hungary, India, Indonesia, Ireland, Italy, Japan, Luxembourg, Malaysia, Mexico, Netherlands, New Zealand, Norway, Philippines, Poland, Portugal, Romania, Russia, Saudi Arabia, Singapore, Slovakia, South Africa, South Korea, Spain, Sweden, Switzerland, Taiwan, Thailand, Turkey, United Arab Emirates, United Kingdom, United States

(\*\*) For information on the 'white-list' and 'merged-000-client' approach, please see [here](#)

Client 300 is not delivered in the SAP S/4HANA 2020 Fully-Activated Appliance.

© 2020 SAP SE or an SAP affiliate company. All rights reserved.

Public 9

Please see chapter 2 for default users and logon procedures.

(\*) For the **US localization**, SAP Best Practices are delivered **with internal tax calculation**. This includes sample jurisdiction codes and sample rates so that you can execute the best practices test scripts. **The organizational structure and chart of accounts** are activated with SAP Best Practices sample content. Client 200 does not contain these settings.

(\*\*) An explanation of Whitelist and merged-000 can be found in the [Implementation Guide](#) → *Prerequisite Settings* → *Setting up a new Best Practices Client - Client Setup Alternatives*.

## 1.5 Post-installation Steps & Sample Demo Walkthroughs

Once you have created an appliance in SAP Cloud Appliance Library, you will have a principally working system.

However, there are some settings that you should adapt prior to first usage to ensure the best experience for your end users, such as setting the open materials management period to the current month.

Please see this blog (<https://blogs.sap.com/2019/04/23/sap-s4hana-fully-activated-appliance-demo-guides/>) for post-installation steps and extensive demo guides with sample walkthrough scenarios.



---

## 1.6 More Information & Support

### 1.6.1 More Information

**Overview blog** in SAP Community: <https://blogs.sap.com/?p=727457>

**Known issues blog** in SAP Community: <https://blogs.sap.com/?p=1215356>

**Post installation steps and sample demo walkthroughs:**

(<https://blogs.sap.com/2019/04/23/sap-s4hana-fully-activated-appliance-demo-guides/>)

**SAP S/4HANA Trial Landing Page** (also containing a “Quick Start Guide” how to set up the appliance)  
<https://www.sap.com/cmp/oth/crm-s4hana/s4hana-on-premise.html>

**YouTube playlist** (how to create Cloud Provider accounts, start an SAP S/4HANA appliance, etc):

<https://www.youtube.com/playlist?list=PLWV533hWWvDmww3OX9YPhjjS1l1n6o-H2>

### 1.6.2 Support

If you run a 30-day trial (i.e. no SAP Cloud Appliance Library subscription license), please use the **SAP Community** (preferably take SAP Cloud Appliance Library as it's very closely monitored):

- SAP Cloud Appliance Library (for CAL usage, access, etc.): <https://answers.sap.com/tags/67837800100800004473>
- SAP S/4HANA (for S/4 specific functional questions): <https://answers.sap.com/tags/73554900100800000266>

If you have an SAP Cloud Appliance Library subscription license acquired, you can also [report an incident](#) (component BC-VCML-CAL).

## 2 Accessing the Appliance Template

### 2.1 Overview

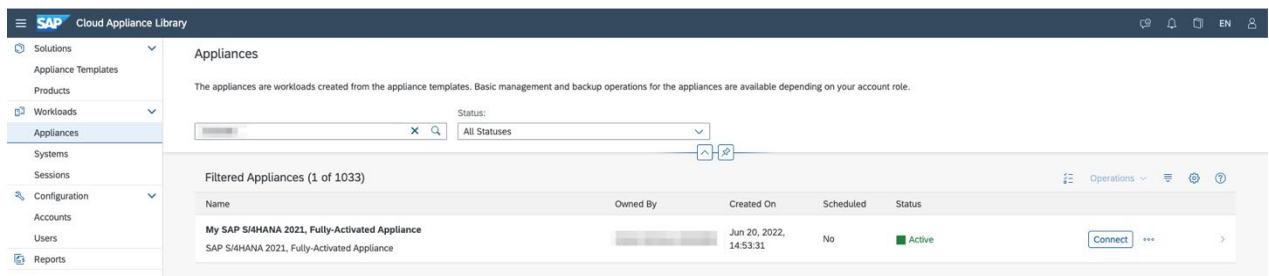
The appliance template can be accessed via a preconfigured Windows remote desktop (option 1) or via client tools on your local PC (option 2).

For first steps with the appliance template, we recommend access via the remote desktop since you only need to have the Windows remote desktop client installed on your PC which in most cases will be the case,

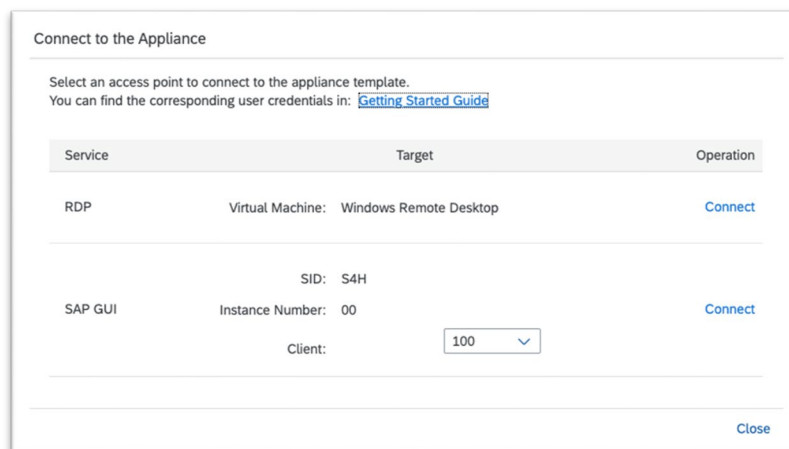
Since UI performance are usually better via access from your local PC, please evaluate if you can use this method as standard access. It requires administrator access on your PC and 5 minutes of effort.

### 2.2 Option 1: System access via embedded Windows Remote Desktop frontend server

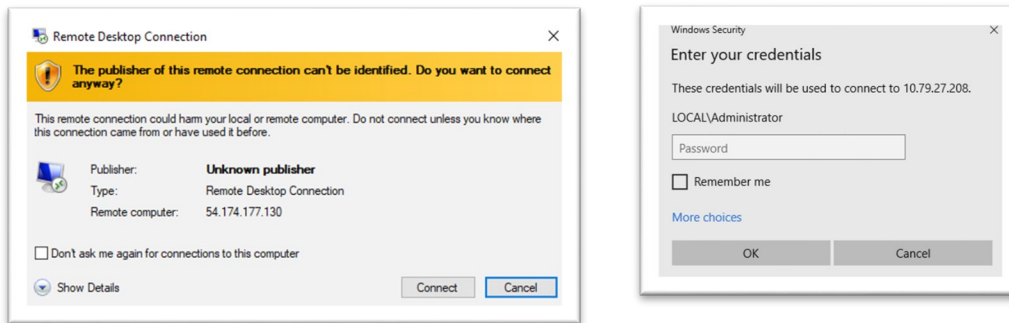
1. After your own appliance is created, click the [Connect](#) button in the Appliances view of the console.



2. In the pop-up, click [Connect](#) in the “RDP Virtual Machine: Windows Remote Desktop” line .



- Confirm the pop-up window to allow Remote Desktop Connection (click on “Connect”).  
Enter user Administrator (local domain of the remote desktop) and your <Master Password> that you specified during the appliance creation in the SAP Cloud Appliance Library console.



- Next you will see the pre-configured Windows Frontend Server. Follow the information on the Welcome page (start link also on desktop if it doesn't come up automatically) to logon to the SAP S/4HANA system, and to run sample scenarios. More details on system connectivity can be found in section 3.3.

**Welcome to the SAP S/4HANA 2020 (SP00) Fully-Activated Appliance**

**About this remote desktop**

This remote desktop is one part of the SAP S/4HANA Fully-Activated Appliance that you have created via the SAP Cloud Appliance Library console (SAP CAL). It is the easiest access to your SAP S/4HANA backend system, but you can access your system also via frontend tools that are installed on your local computer. For details, please see the **Getting Started Guide** that is linked from your personal system instance in the SAP CAL console (<https://cal.sap.com> -> Install).

**Note on SSL certificates:**  
A certificate (self-signed by SAP) provides single sign-on features when using Chrome on this remote desktop against the SAP S/4HANA 1909 Fully-Activated Appliance. When accessing the Fiori Launchpad on other browsers / machines, you will encounter browser messages about untrusted sites, unsecure connections, etc. (detailed message text varies by browser). Please confirm these messages and continue.  
If you would like to call the SAP S/4HANA Fully-Activated Appliance from other environments that require a trusted certificate (e.g. SAP Analytics Cloud or SAP BusinessObjects), see the documentation how to import your own trusted certificate into the appliance.

**Access to your system**

**Access via SAP Fiori Launchpad**

You can start exploring the [SAP Fiori Launchpad](#) in client 100 with the users in the below table.

The users `S4H_<area>_DEM` (e.g. `S4H_FIN_DEM`) have a restricted set of roles and Fiori apps assigned for the respective area, and should be primarily used for testing.

The users `S4H_<area>` (e.g. `S4H_FIN`) have the complete set of roles and Fiori apps for the respective area assigned (based on our assessment in the SAP CAL console). They are significantly longer loading times in the Fiori launchpad, and should be used primarily to get an overview of interesting roles/apps, and to serve as templates for your own system.

**Further useful links for browser access (credentials are case sensitive)**

- [SAP Web Dispatcher console](#) (bpinst / Welcome1)
- [SAP NetWeaver Administrator \(JAVA\)](#) (Administrator / <Your Master Password>)
- [SAP Cloud Connector](#) (Administrator / manage)
- If deployed: [SAP BusinessObjects CMC](#) (Administrator / Welcome1) & [SAP BusinessObjects BI Launchpad](#) (BPINST / Welcome1)

User (client 100)	Business capability / Demo scenario	Initial password
S4H_AA_DEM / S4H_AA	Asset Accounting	Wlcm1
S4H_FIN_DEM / S4H_FIN	Finance	Wlcm1
S4H_CASH_DEM / S4H_CASH	Cash Management	Wlcm1
S4H_CO_DEM / S4H_CO	Controlling	Wlcm1
S4H_MM_DEM / S4H_MM	Materials Management	Wlcm1
S4H_PP_DEM / S4H_PP	Production Planning	Wlcm1

Note:

The embedded Windows Remoted Desktop license allows 2 concurrent sessions (e.g. one for the existing user Administrator and one for another user that you can create on the remote desktop). Installing your own RDP license might also be an option to allow more concurrent users on the RDP.

## 2.3 Option 2: System access via local PC

### 2.3.1 Mapping your local */etc/hosts* file

To log on to the Fiori Launchpad from your local PC, you need to ensure that you have mapped the IP addresses of your appliance against clear text host names. This mapping step is needed since the connection to the cloud providers uses IP addresses, whereas the S/4HANA system needs dedicated host names to work correctly.

After you have done the mapping (by editing a local file on your computer), you will be able to access the Fiori Launchpad of SAP S/4HANA via this URL:

[https://vhcals4hcs.dummy.nodomain:44301/sap/bc/ui5\\_ui5/ui2/ushell/shells/abap/FioriLaunchpad.html](https://vhcals4hcs.dummy.nodomain:44301/sap/bc/ui5_ui5/ui2/ushell/shells/abap/FioriLaunchpad.html)

If you cannot map your local hosts file (e.g. you don't have administrator rights on your computer), you can use the IP address of your appliance in the URL ([https://<IP\\_Address>:44301/...](https://<IP_Address>:44301/...)), however, not all applications and scenarios will work correctly with it e.g. WebGUI or Web Dynpro applications will not display in the browser.

Another option could be to use browser plugins (e.g. Chrome Virtual Host) that simulate the mapping in the browser session only. Again, not all scenarios might work correctly with it.

The following describes how to modify the local hosts file on a Windows computer (for Mac, please search the Internet for options).

1. Open **Notepad** as administrator (search for **Notepad** on your computer > Right mouse click > Run as administrator):
2. Click **File** → **Open** and enter the following path:  
For Windows operating system: `c:\windows\system32\drivers\etc\hosts`  
For Linux operating system: `/etc/hosts`
3. Ensure to select **All Files (\*.\*)**
4. Open the **hosts** file and add the following lines to it (the IP addresses for the servers are displayed in the Cloud Appliance Library console in the appliance properties, take the **external** IP address):

```
# S4H Appliance
<External IP Address SAP S4HANA/HDB server> vhcals4hci.dummy.nodomain vhcals4hci
vhcals4hcs.dummy.nodomain vhcals4hcs vhcaldhdb vhcaldhdb.dummy.nodomain
<IP Address SAP NW JAVA/ASE/ADS server> vhcals4eci.dummy.nodomain vhcals4eci
vhcals4ecs.dummy.nodomain vhcals4ecs vhcals4edb vhcals4edb.dummy.nodomain
<IP Address SAP BI Platform > bihost bihost.dummy.nodomain
```

5. Save the **hosts** file and exit.

## 2.4 Users & passwords for the system components

Note upfront: For URLs starting with `vhcal...` you will need to map your `/etc/hosts` file as described in chapter 2.3.

### 2.4.1 SAP S/4HANA ABAP application server

#### 2.4.1.1 Pre-configured business users in SAP S/4HANA

Client	Business Content	Sample users (password <i>Welcome1</i> if not noted otherwise)
000 Standard delivery client	<ul style="list-style-type: none"><li>Nothing specific (standard customizing only)</li></ul>	<ul style="list-style-type: none"><li>BPINST</li><li>DDIC / SAP* (&lt;Master_Password&gt;)</li></ul>
100 Trial & Exploration client	<ul style="list-style-type: none"><li>Pre-activated SAP Best Practices for SAP S/4HANA 2020 (Germany &amp; US, sample demo flow localized for US) *</li><li>Customizing and transactional data in US company code (1710)</li><li>SAP Fiori Apps</li><li>Based on the <a href="#">merged-client</a> approach</li><li>BW configuration for Integrated Business Planning (IBP)</li></ul> <p><u>Note on the users:</u> The users <code>S4H_&lt;area&gt;_DEM</code> (e.g. <code>S4H_FIN_DEM</code>) have a restricted set of roles and Fiori apps assigned for the respective area, and should be primarily used for the <a href="#">suggested demo walkthroughs</a>.</p>	<ul style="list-style-type: none"><li><code>S4H_AA_DEM</code> / <code>S4H_AA</code> (Asset Accounting)</li><li><code>S4H_FIN_DEM</code> / <code>S4H_FIN</code> (Finance)</li><li><code>S4H_CASH_DEM</code> / <code>S4H_CASH</code> (Cash Management)</li><li><code>S4H_CO_DEM</code> / <code>S4H_CO</code> (Controlling)</li><li><code>S4H_MM_DEM</code> / <code>S4H_MM</code> (Materials Management)</li><li><code>S4H_PP_DEM</code> / <code>S4H_PP</code> (Production Planning)</li><li><code>S4H_SD_DEM</code> / <code>S4H_SD</code> (Sales &amp; Distribution)</li><li><code>S4H_EXT</code> (Extensibility)</li><li><code>S4H_EWM_DEM</code> (Warehouse Management)</li><li><code>S4H_DDR_DEM</code> (Demand-Driven Replenishment)</li><li><code>S4H_PPM_...</code> (Portfolio &amp; Project Management)</li></ul>



Client	Business Content	Sample users (password <i>Welcome1</i> if not noted otherwise)
	The users <i>S4H_&lt;area&gt;</i> (e.g. <i>S4H_FIN</i> ) have the complete set of roles and Fiori apps for the respective area assigned (based on our assessment in the context of the appliance). These users will have significantly longer loading times in the Fiori launchpad, and should be used primarily to get an overview of interesting roles/apps, and to serve as template for your own user creation in transaction SU01.	<ul style="list-style-type: none"> <li>• <i>S4H_TM_DEM</i> (Transportation Management)</li> <li>• <i>S4H_PAI</i> (Predictive Analytics)</li> <li>• <i>S4H_MG</i> (Data Migration)</li> <li>• <i>SERV_EMPL / SERV_MAN / SLS_MAN / IC_AGENT_SRV</i> (SAP S/4HANA Service)</li> <li>• <i>MDG_...</i> (Master Data Governance)</li> <li>• <i>S4H_HCM_...</i> (Human Capital Management)</li> <li>• <i>BPINST</i> (Generic user. Caution: very long loading times in Fiori Launchpad)</li> </ul>
200 Ready-to-Activate client (white list)	<ul style="list-style-type: none"> <li>• Ready-to-Activate client with all pre-activation preparation activities executed</li> </ul>	<i>BPINST</i>
400 SAP Best Practices reference client (white-list)	<ul style="list-style-type: none"> <li>• Pre-activated SAP Best Practices for SAP S/4HANA 2020 without transactional data</li> <li>• Based on the <u>merged-client</u> approach</li> </ul>	<i>BPINST</i>

All above users have the default password *Welcome1*.

### 2.4.1.2 Administrative data & users for SAP S/4HANA

Connect to SAP S4H using the information in the table below (URLs with the host name *vhcal...* require hosts file mapping before, see chapter 2.3).

Name	Value	Description
SID	S4H	System ID of the SAP system
Instance Number	00	The instance number of the central instance (CI)
Clients	See section 1.4	These are the pre-configured clients, see section “Business Scenarios & Localizations” for details

Name	Value	Description
Password for users DDIC & SAP*	<Master Password> in client 000. Welcome1 in other clients	The master password is the password that you chose in the SAP Cloud Appliance Library when creating the appliance.
ABAP administrator	s4hadm / <Master Password>	Additional user for ABAP lifecycle management – start/stop, administration,
SAP Web Dispatcher administrator	webadm / VA1MPwd_ or bpinst / Welcome1	Access to Web Dispatcher console: <a href="https://vhcals4hcs.dummy.nodomain:44301/sap/admin/public/default.html">https://vhcals4hcs.dummy.nodomain:44301/sap/admin/public/default.html</a> bpinst is case sensitive.
Technical user for HANA DB connectivity (schema user)	SAPHANADB / <Master Password>	See tCode DBACOCKPIT → System Landscape → Database Connections for additional usage of the SAPHANADB user
SAP Cloud Connector	Administrator / manage	Initial credentials for the integrated SAP Cloud Connector (access via <a href="https://vhcals4hcs.dummy.nodomain:8443">https://vhcals4hcs.dummy.nodomain:8443</a> )

## 2.4.2 SAP HANA DB server

Two database entities are relevant for the appliance:

The tenant database (used to store the S/4HANA data) and the system database (for general data and settings e.g. maintaining the license key for SAP HANA).

An entry for both is pre-configured in the HANA Studio on the remote desktop but you can also add entries in your local HANA Studio.

**Tenant database** (use Single Container when adding it to your local HANA Studio)

Name	Value	Description
HANA DB system	HDB	System ID of the HANA DB
HANA DB Instance Number	02	Instance number of HANA DB
HANA SYSTEM user name	SYSTEM / <Master Password>	Standard HANA system user
HANA administrator name	hdbadm / <Master Password>	Additional user for HANA lifecycle management – start/stop, administration functions, recovery.
Generic HANA DB user	BPINST / Welcome1	Generic user that can be used to access HANA DB

Name	Value	Description
Technical S/4HANA user	SAPHANADB / <Master Password>	Technical user for accessing HANA from the S/4HANA server. Defined in /nDBACOCKPIT; HANA schema SAPHANADB contains the S/4HANA data

**System database** (use *Multiple Containers* → *System DB* when adding it to your local HANA Studio, needed e.g. for applying your own HANA DB license key)

Name	Value	Description
HANA DB system	SYSTEMDB	System ID of the HANA DB
HANA DB Instance Number	02	Instance number of HANA DB
HANA SYSTEM user name	SYSTEM / <Master Password>	Standard HANA system user
HANA administrator name	hdbadm / <Master Password>	Additional user for HANA lifecycle management – start/stop, administration functions, recovery.
Generic HANA DB user	BPINST / Welcome1	Generic user that can be used to access HANA DB

## 2.4.3 Java Application Server

The administration users for ASE and JAVA on operating system level are defined as follows:

Name	Value	Description
ASE administrator name	sybadm / <Master Password>	Additional user for Sybase ASE lifecycle management – start/stop, administration.
JAVA administrator name	Administrator / <Master Password>	Additional user for JAVA lifecycle management – start/stop, administration, functions, recovery. Access to SAP NetWeaver Administrator: <a href="https://vhcalj2eci.dummy.nodomain:50001/nwa">https://vhcalj2eci.dummy.nodomain:50001/nwa</a>
Additional JAVA user	BPINST / Welcome1	Generic user in case other users are locked

## 2.4.4 SAP BusinessObjects BI platform

The administration users for SAP BusinessObjects BI Platform are defined as follows:

Parameter ID	Parameter Value	Note
Administrator name	Administrator / Welcome1	Use for all administrative functions of the BI platform e.g. in CMC
BI Power User	BPINST / Welcome1	Use for BI Launchpad
SQL Anywhere DB user	dba / Appl1ance	Use to log on to the DB of the BI platform on Linux backend stored under /data/bobj/sqlanywhere/database
BI Platform Linux backend user	bipadm / <Master Password>	

In the logon screen (<http://bihost:8080/BOE/BI>), use *bihost:6400* as system and Enterprise authentication. Usage of the *bihost* alias requires local host file mapping when using local PC access (see section 2.3). The Windows remote desktop has the mapping pre-configured.

## 2.4.5 Windows Frontend Server Details

Connect to the Frontend server using the information in the table below.

SAP does not provide a separate MS Windows Terminal Server license as part of the appliance template; hence, you can connect with a maximum of two concurrent users (with different user IDs) at the same time. The *Administrator* account is pre-configured, and you may create additional user IDs in the local user administration of the remote desktop if needed.

If you want to use the remote desktop with larger user numbers, please apply your own MS Terminal Server license to the remote desktop and potentially choose a larger sizing for the RDP in the Cloud Appliance Library console.

Name	Value	Description
IP Address	<IP Address>	The IP address of your frontend server appliance you created in SAP Cloud Appliance Library (use the “external” IP address)
User	Administrator / <Master Password>	User for the Windows frontend server. This is a local user on the remote desktop. Only one Administrator user can logon to the front-end server at the same point in time.

### A note on browsers:

Google Chrome and Firefox are pre-installed on the Remote Desktop. In the Fiori launchpad, you might find slightly different rendering behaviors depending on the browser version. If you encounter rendering problems, please search for SAP Notes how to potentially fix them.

If you want to access the Fiori Launchpad with a local browser, please be sure to map your local host file as described in section 2.3 of this document or on <https://www.sap.com/cmp/oth/crm-s4hana/s4hana-on-premise.html> → *Quick Start Guide* since otherwise some Fiori applications (e.g. WebGUI or Web Dynpro) will not work correctly.

## 2.4.6 Accessing Your Appliance on Linux Level

You can access the Linux backend system of your appliance (ABAP / JAVA / BI) as *root* using secure SSH tools, e.g. PuTTY. For information how to access an appliance template on OS level, go to [this FAQ page](#) and look under the question: **How to connect to a running appliance via the secure shell protocol (SSH)?**

Parameter ID	Parameter Value	Note
OS User Name	root	The default Linux administrator user
OS Password	<none>	Use the generated private key with SSH tools

Note:

You must use the private key (file format .pem) that was generated in the last step of the Create Appliance wizard from SAP Cloud Appliance Library. During the creation, you were asked to either store the key file attached to your appliance within SAP Cloud Appliance Library or download it to a local secure file share on your computer.

## 2.5 Optional: Get your own fully-qualified domain name & SSL certificate

The SAP S/4HANA Fully-Activated Appliance by default contains these two settings:

- A dummy domain name for Fiori access (\*.dummy.nodomain)
- A certificate self-signed by SAP (issuer ca.dummy.nodomain)

Depending on network setup and end-user authorizations, these settings may cause problems:

- Business users need to change the */etc/hosts* file with administrator rights on their PC (often not allowed)
- The corporate proxy or the end-user web browser might generally not trust self-signed certificates and bounces them back
- Inbound connectivity into the S/4HANA system (e.g. from SAP Analytics Cloud) is not trusted due to a self-signed certificate

On the [demo guide blog of the appliance](#), you can find a technical guide how to enable this for your system.

The Fiori domain name change requires on SAP GUI access (~ 15 minutes); the SSL certificate requires access to the Linux OS and basic Linux skills (~ 30 minutes).

**Please be aware that the mentioned guide is meant to provide a quick workaround and might not comply with the security recommendations that are issued by SAP in general.**



### 3 Licenses & Fees

SAP Cloud Appliance Library is a platform for quickly using SAP on-premise software products in a hyperscaler environment. Therefore, three separate license / cost factors need to be considered, each depending on the duration that your system should be used:

- a) the SAP on-premise product (e.g. SAP S/4HANA)
- b) SAP Cloud Appliance Library
- c) the chosen hyperscaler

This table gives an overview about the different aspects. Details are mentioned in the paragraphs afterwards.

The third column in the table below (on-premise installation) is an alternative to SAP Cloud Appliance Library and not covered in detail in this document (please see SAP Note [2041140](#) for details).

#### SAP S/4HANA 2020 Fully-Activated Appliance: Fees, licenses, and support for the different channels

	SAP CAL 30-day trial	SAP CAL >30 days	On-Premise installation <sup>2)</sup>
<b>SAP S/4HANA licenses ?</b>	No Covered by web-based terms & conditions form on <a href="#">cal.sap.com</a>	Yes <sup>1)</sup> Bring your own (trial) licenses. Appliance has 90-day temporary license key as courtesy.	Yes <sup>2)</sup> Bring your own (trial) licenses. Appliance has 90-day temporary license key as courtesy.
<b>SAP CAL license ?</b>	No Covered by web-based terms & conditions form on <a href="#">cal.sap.com</a>	Yes Monthly CAL subscription is needed (see <a href="#">here</a> )	No
<b>Hosting fees ?</b>	Yes Hosting provider will charge you	Yes Hosting provider will charge you	No
<b>Server hardware costs ?</b>	No	No	Yes Hardware (x86_64) with Linux OS needed
<b>Support ?</b>	<a href="#">SAP community</a>	SAP Incident (BC-VCM-CAL)	SAP Incident (BC-INS-SRN)

Supported hosting providers as of July 2020 are Amazon Web Services (AWS), Microsoft Azure, Google Cloud Platform (GCP)

<sup>1)</sup> What SAP S/4HANA licenses are needed ?



Free 90-day SAP S/4HANA trial licenses (Enterprise Management, professional use) are sufficient for non-productive usage and can be obtained via

- SAP Account Executive
- SAP Store (customer self-service)

For SAP Partners, a fitting T&D license is sufficient.

<sup>2)</sup>  
See SAP Note [2041140](#) for details.  
This deployment channel needs additional licenses when ordered via account executive; the SAP Store self-service license has those included already.

---

## 3.1 First 30 days: Running your appliance as trial

In the first 30 days, the SAP license fees (Cloud Appliance Library & S/4HANA) are waived. During this period, you only need to bear the hosting fees of your cloud provider.

The 30-day period starts when you accept the form for the trial agreement in the Cloud Appliance Library console (after clicking on “Create Appliance”).

During the instantiation, the S/4HANA system will generate a temporary license key that is enough for exploration purposes.

## 3.2 Beyond 30 days: Running your appliance with SAP licenses

If you want to use an appliance template beyond the 30-day trial period (i.e. [unlock the appliance template in SAP CAL](#)), you need to obtain two SAP licenses:

1. The SAP Cloud Appliance Library (SAP CAL) subscription
2. The SAP product licenses

The validity of these licenses will be automatically checked after the first 30 days. In case of a missing license component an error message will be displayed in the SAP Cloud Appliance Library console and the respective appliance will stay in status “Suspended”.

The cloud provider fees will stay the same as during the first 30 days.

You can continue to use a trial appliance from the first 30 days under these conditions, all your changes in that appliance will be preserved once you unlock the appliance template.

### 3.2.1 SAP Cloud Appliance Library subscription

You can purchase the subscription package via the SAP Store on <https://www.sapstore.com/solutions/99007/SAP-Cloud-Appliance-Library>.

The minimum subscription is 3 months for one appliance (i.e. you can have exactly one appliance active at a time during these 3 months). You can also choose longer subscription periods and higher appliance numbers (i.e. you can activate multiple appliance templates in parallel).

In the SAP Store, you will need an S-user that has the “SAP Store buyer role” assigned. Please make sure that the SAP Store user and the SAP Cloud Appliance Library user belong to the same organization, otherwise the mapping between the license and the to-be-unlocked appliance is not possible.

---

## 3.2.2 SAP product licenses

### 3.2.2.1 SAP S/4HANA

To use an appliance under your own SAP Product License Agreements, you need to possess at least a license for the SAP HANA DB (application runtime) and for SAP S/4HANA Enterprise Management professional use.

If you don't possess these licenses already, you can either obtain them via your SAP account executive, or online as self-service by licensing the free [SAP S/4HANA 90-day trial in SAP Store](#).

The Cloud Appliance Library infrastructure checks whether the customer/partner organization of the S-user who created the appliance in SAP Cloud Appliance Library possesses these licenses. Only if this check is passed, the appliance can be activated in SAP Cloud Appliance Library.

The licenses entitle your organization to use the appliance template, however, since technically you will still be running under the 90-day temporary license key, we recommend generating your own license key and apply it to your system as soon as possible. 90 days after the initial appliance creation, the system will stop working without these technical license keys (see the next chapter for details).

#### Note:

The following separately licensed SAP S/4HANA capabilities are also configured and described in the pre-configured demo scenarios of the appliance. These capabilities will technically work in your appliance without entering dedicated license keys for them, however, they might not be part of your customer-specific license agreement for implementation / production systems.

- SAP S/4HANA Finance for cash mgmt.
- SAP S/4HANA Finance for receivables mgmt.
- SAP S/4HANA for advanced compliance reporting
- SAP Business Planning and Consolidation, add-on for S/4HANA
- SAP S/4HANA for extended planning
- SAP S/4HANA Advanced Available-to-Promise
- SAP S/4HANA for Advanced Variant Configuration, standard
- SAP Portfolio and Project Management for SAP S/4HANA professional
- SAP Enterprise Master Data Governance for SAP S/4HANA

### 3.2.2.2 Optional: SAP BusinessObjects BI Platform licenses

If you chose to use the optional SAP BusinessObjects Platform in your appliance, the temporary license key for BI will be valid for 30 days. It needs to be replaced by your own permanent key for the BI platform after that time if you want the BI platform to work.

If you don't apply a permanent license key, the BI platform cannot be used anymore. The other appliance components (S/4HANA etc.) will not be affected and can be used even without the BI platform.

### 3.2.3 License key installation in your appliance

Latest 90 days after appliance creation (but better directly after unlocking the appliance template in Cloud Appliance Library after 30 days), you need to apply a valid license key to the system components.

- SAP S/4HANA
- SAP HANA database
- SAP NetWeaver J2EE platform
- Optional: SAP BusinessObjects BI platform

The first three are part of the SAP S/4HANA license; the BI platform needs to be licensed separately.

To get license keys for your system components, you first need to register them as a customer installation (see <https://support.sap.com/en/my-support/systems-installations.html>).

Afterwards you can request license keys via the SAP license key application (<https://support.sap.com/licensekey>).

During the license key generation, you will be asked for certain parameters (hardware keys and other system properties). The table below has the details.

For more information about how to request and install product license keys, see [this blog](#).

#### Note to SAP employees:

You can generate SAP-internal license keys (18 months validity) directly in the [license key application](#) without having to register your system (just enter the hardware key and the needed parameters).

SID	Product	Version	DB	OS	Comment	Where to apply (incl. hardware key) ?
HDB	SAP HANA, platform edition	SAP HANA 2.0, platform edition	n/a	Linux	License type: SAP In- memory Appliance platform Quantity: 256 GB Memory Volume	Right-click in HANA Studio on HANA System DB → <i>Properties</i> → <i>Licenses</i> .  Remote desktop has pre-configured entry  Local HANA Studio: host name vhcalthdbdb or IP address; instance number 02; multiple containers > system database.
S4H	SAP S/4HANA	SAP S/4HANA 2020	SAP HANA database	Linux	N/A	S/4HANA GUI tCode /nSLICENSE
J2E	SAP NetWeaver	SAP NetWeaver 7.5	Sybase ASE	Linux	As license type, select 'J2EE - Web AS JAVA'	NW Administrator ( <a href="https://vhcalj2eci.dummy.nodomain:50001/nw">https://vhcalj2eci.dummy.nodomain:50001/nw</a> a) → Configuration → Infrastructure → Licenses.
BIP	Optional: SAP BusinessObjects Business	SAP BusinessObjects Business Intelligence platform 4.2	n/a	Linux	Material: Choose SAP BO BI Platform ...	BOE CMC ( <a href="http://bihost:8080/BOE/CMC">http://bihost:8080/BOE/CMC</a> ) → Licenses

SID	Product	Version	DB	OS	Comment	Where to apply (incl. hardware key) ?
	Intelligence platform					



## 4 Security Aspects in SAP Cloud Appliance Library

### 4.1 Internet ports for accessing your system

By default, the following ports are opened for your appliance (i.e. this is the inbound firewall of your cloud provider). The access from your local computer to your appliance happens via those ports (see 'Description' what port is used where).

Please make sure that your outbound firewall (e.g. if you are behind a corporate firewall) allows access through the needed ports as well. If you encounter problems behind a firewall, a good test is to use a public network (e.g. from home) or test access via the delivered remote desktop – assuming you can access the remote desktop via port 3389.

You can edit/add/remove ports manually in the appliance details (click on the instance link in the *Cloud Appliance Library* console → *Edit* → *Virtual Machine* → *Access Points*).

Virtual Machine*	Protocol	Port (open by default)	Description
ABAP	SSH	22	Used for secure connection to Linux-based server operating system
ABAP	HTTPS	44301, 44300	Used for access of a local web browser to appliance (Fiori etc.). 44301 via Web Dispatcher, 44300 via ABAP ICM directly
ABAP	HTTP	50000	Standard HTTP port for ABAP
ABAP	HTTPS	8443	Access to integrated Cloud Connector
ABAP	SAP GUI	3200	Used for access of local SAP GUI to appliance
ABAP	TCP	3300	Used for connection of ABAP Development Tools (Eclipse-based) to SAP S/4HANA ABAP repository & RFC calls to other systems if intended
ABAP	TCP	30213 / 30215	Used for connection of SAP HANA Studio to HANA DB
JAVA	SSH	22	SSH connection to Linux operating system (e.g. for PuTTY)
JAVA	HTTPS	50001	Used for access to SAP NetWeaver Administrator and other web-based J2EE applications
BIP	SSH	22	Used for secure connection to Linux-based server operating system
BIP	HTTP	8080 & 6400	Used for HTTP connection to BI platform
WIN	RDP	3389	Used for access from MS Windows remote desktop connection

\* JAVA = SAP NetWeaver 7.50 AS JAVA incl. ADS (Adobe Document Service)

ABAP = SAP NetWeaver 7.55 AS ABAP incl. SAP S/4HANA

BIP = SAP BusinessObjects BI Platform 4.2

WIN = MS Windows Remote Desktop

---

## 4.2 Network security considerations

Be aware that creating your appliances in the public zone of your cloud computing platform (i.e. the “open Internet”) is convenient but less secure than providing it within your corporate network.

If you want to tighten the security, open as few ports as really needed for your scenario.

In addition, we also recommend that you limit the access to your appliances by defining a whitelisted IP range of IP addresses that may access your appliance template (e.g. the subnet of your company). With this, only computers within the white-listed IP range can access your system via the specific port. You can maintain the IP Range settings in the Cloud Appliance Library console → *Edit* → *Virtual Machine* → *Access Points.*, using [CIDR notation](#).

The more complex but also more secure alternative to public Internet is to set up a virtual private cloud (VPC) with VPN access, which is described in [this tutorial on SCN](#).

Note that when using HANA based appliances, HANA systems are not installed individually but cloned from a template system. Because of this cloning process, the existing root keys are cloned. For more information, see this [SAP Note 2134846 - HANA encryption key handling during system cloning](#).

## 4.3 ABAP user roles and profiles

The ABAP business users listed in chapter 2 have a large set of roles and extensive authorizations (**including the SAP\_ALL profile**).

If you plan to release the appliance to a larger set of users (especially in the Internet scenario), it is advised to restrict/lock the access with these users (or change the initial passwords) and create your own users with fitting roles and authorizations.

This can be done using the standard user management capabilities (e.g. tCode SU01, etc.).

Please also note that the user BPINST is used in various RFC connections (tCode SM59) with its fixed password. If you lock the BPINST user or change its password, please also adapt these connections accordingly.

## 4.4 Certificates

The appliance template comes with a certificate that was self-signed by SAP. Most local browsers will issue a warning message that such a certificate is untrusted, and you will need to add the affected URLs (Fiori launchpad and others) to the list of trusted sites once.

Hence, if you see messages about unsafe connections, untrusted certificates, etc., please click on “Proceed” or “I know the risk”, etc. (the screens and needed clicks will vary depending on the browser).

As an alternative, you can also apply your own trusted certificate to the system (using tCode STRUST, etc.).

On the delivered remote desktop, the self-signed certificate has already been imported into the store with trusted certificates, and you will not see a warning if you access the Fiori launchpad. The web sites of the J2EE server or the SAP Cloud Connector will still display warnings, please acknowledge the risk and continue as outlined above.

---

## 5 Appliance Template Provisioning in SAP Cloud Appliance Library

If you have a user in SAP Cloud Appliance Library, you need to meet the following prerequisites before starting to use the SAP Cloud Appliance library:


### Cloud Provider Configurations

You have a valid account in one of the cloud providers supported by SAP Cloud Appliance Library. If you already have an active cloud provider account, you can proceed directly with the next section. Otherwise, navigate to the cloud provider home page and sign up.

For more information about the supported cloud providers, see the [FAQ page](#) or this [YouTube playlist](#).

### Navigate to SAP Cloud Appliance Library

Open the SAP Cloud Appliance Library in your Web browser using the following link: <https://cal.sap.com>

For more information about how to use appliance templates in SAP Cloud Appliance Library, see the official documentation of SAP Cloud Appliance Library (choose [Support](#) → [Documentation](#) link and choose  (expand all) button to see all documents in the structure). You can also use the context help in SAP Cloud Appliance Library by choosing the [Help](#) panel from the right side.

## 6 Appendix

### 6.1 Installed Technical Component Details

#### 6.1.1 SAP NetWeaver 7.55 application server ABAP incl. SAP S/4HANA 2020 SP00

Component	Release	SP Level	Support Package	Short Description of Component
SAP_BASIS	755	0000	-	SAP Basis Component
SAP_ABA	75F	0000	-	Cross-Application Component
SAP_GWFND	755	0000	-	SAP Gateway Foundation
SAP_UI	755	0001	SAPK-75501INSAPUI	User Interface Technology
ST-PI	740	0013	SAPK-74013INSTPI	SAP Solution Tools Plug-In
SAP_BW	755	0000	-	SAP Business Warehouse
UIBAS001	600	0000	-	UI for Basis Applications 6.0
MDG_FND	805	0000	-	MDG Foundation
S4FND	105	0000	-	Foundation
MDG_APPL	805	0000	-	MDG Applications
S4CEXT	105	0000	-	S4CEXT
S4CORE	105	0000	-	S4CORE
S4CRM	205	0000	-	S4CRM
SAP_HR	608	0082	SAPKE60882	Human Resources
SAP_HRCAE	608	0082	SAPK-60882INSAPHRCAE	Subcomponent SAP_HRCAE of SAP_HR
SAP_HRCAR	608	0082	SAPK-60882INSAPHRCAR	Subcomponent SAP_HRCAR of SAP_HR
SAP_HRCAT	608	0082	SAPK-60882INSAPHRCAT	Subcomponent SAP_HRCAT of SAP_HR
SAP_HRCAU	608	0082	SAPK-60882INSAPHRCAU	Subcomponent SAP_HRCAU of SAP_HR
SAP_HRCBE	608	0082	SAPK-60882INSAPHRCBE	Subcomponent SAP_HRCBE of SAP_HR
SAP_HRCBG	608	0082	SAPK-60882INSAPHRCBG	Subcomponent SAP_HRCBG of SAP_HR
SAP_HRCBR	608	0082	SAPK-60882INSAPHRCBR	Subcomponent SAP_HRCBR of SAP_HR
SAP_HRCCA	608	0082	SAPK-60882INSAPHRCCA	Subcomponent SAP_HRCCA of SAP_HR
SAP_HRCCH	608	0082	SAPK-60882INSAPHRCCH	Subcomponent SAP_HRCCH of SAP_HR
SAP_HRCCL	608	0082	SAPK-60882INSAPHRCCL	Subcomponent SAP_HRCCL of SAP_HR

Component	Release	SP Level	Support Package	Short Description of Component
SAP_HRCCN	608	0082	SAPK-60882INSAPHRCCN	Subcomponent SAP_HRCCN of SAP_HR
SAP_HRCCO	608	0082	SAPK-60882INSAPHRCCO	Subcomponent SAP_HRCCO of SAP_HR
SAP_HRCCZ	608	0082	SAPK-60882INSAPHRCCZ	Subcomponent SAP_HRCCZ of SAP_HR
SAP_HRCDE	608	0082	SAPK-60882INSAPHRCDE	Subcomponent SAP_HRCDE of SAP_HR
SAP_HRCDK	608	0082	SAPK-60882INSAPHRCDK	Subcomponent SAP_HRCDK of SAP_HR
SAP_HRCEG	608	0082	SAPK-60882INSAPHRCEG	Subcomponent SAP_HRCEG of SAP_HR
SAP_HRCES	608	0082	SAPK-60882INSAPHRCES	Subcomponent SAP_HRCES of SAP_HR
SAP_HRCFI	608	0082	SAPK-60882INSAPHRCFI	Subcomponent SAP_HRCFI of SAP_HR
SAP_HRCFR	608	0082	SAPK-60882INSAPHRCFR	Subcomponent SAP_HRCFR of SAP_HR
SAP_HRCGB	608	0082	SAPK-60882INSAPHRCGB	Subcomponent SAP_HRCGB of SAP_HR
SAP_HRCGR	608	0082	SAPK-60882INSAPHRCGR	Subcomponent SAP_HRCGR of SAP_HR
SAP_HRCHK	608	0082	SAPK-60882INSAPHRCHK	Subcomponent SAP_HRCHK of SAP_HR
SAP_HRCHR	608	0082	SAPK-60882INSAPHRCHR	Subcomponent SAP_HRCHR of SAP_HR
SAP_HRCHU	608	0082	SAPK-60882INSAPHRCHU	Subcomponent SAP_HRCHU of SAP_HR
SAP_HRCID	608	0082	SAPK-60882INSAPHRCID	Subcomponent SAP_HRCID of SAP_HR
SAP_HRCIE	608	0082	SAPK-60882INSAPHRCIE	Subcomponent SAP_HRCIE of SAP_HR
SAP_HRCIN	608	0082	SAPK-60882INSAPHRCIN	Subcomponent SAP_HRCIN of SAP_HR
SAP_HRCIT	608	0082	SAPK-60882INSAPHRCIT	Subcomponent SAP_HRCIT of SAP_HR
SAP_HRCJP	608	0082	SAPK-60882INSAPHRCJP	Subcomponent SAP_HRCJP of SAP_HR
SAP_HRCKR	608	0082	SAPK-60882INSAPHRCKR	Subcomponent SAP_HRCKR of SAP_HR
SAP_HRCKW	608	0082	SAPK-60882INSAPHRCKW	Subcomponent SAP_HRCKW of SAP_HR
SAP_HRCKZ	608	0082	SAPK-60882INSAPHRCKZ	Subcomponent SAP_HRCKZ of SAP_HR
SAP_HRCMX	608	0082	SAPK-60882INSAPHRCMX	Subcomponent SAP_HRCMX of SAP_HR
SAP_HRCMY	608	0082	SAPK-60882INSAPHRCMY	Subcomponent SAP_HRCMY of SAP_HR
SAP_HRCNL	608	0082	SAPK-60882INSAPHRCNL	Subcomponent SAP_HRCNL of SAP_HR
SAP_HRCNO	608	0082	SAPK-60882INSAPHRCNO	Subcomponent SAP_HRCNO of SAP_HR





Component	Release	SP Level	Support Package	Short Description of Component
EA-HRCAT	608	0082	SAPK-60882INEAHRCAT	Subcomponent EA-HRCAT of EA-HR
EA-HRCAU	608	0082	SAPK-60882INEAHRCAU	Subcomponent EA-HRCAU of EA-HR
EA-HRCBE	608	0082	SAPK-60882INEAHRCBE	Subcomponent EA-HRCBE of EA-HR
EA-HRCBG	608	0082	SAPK-60882INEAHRCBG	Subcomponent EA-HRCBG of EA-HR
EA-HRCBR	608	0082	SAPK-60882INEAHRCBR	Subcomponent EA-HRCBR of EA-HR
EA-HRCCA	608	0082	SAPK-60882INEAHRCCA	Subcomponent EA-HRCCA of EA-HR
EA-HRCCH	608	0082	SAPK-60882INEAHRCCH	Subcomponent EA-HRCCH of EA-HR
EA-HRCCL	608	0082	SAPK-60882INEAHRCCL	Subcomponent EA-HRCCL of EA-HR
EA-HRCCN	608	0082	SAPK-60882INEAHRCCN	Subcomponent EA-HRCCN of EA-HR
EA-HRCCO	608	0082	SAPK-60882INEAHRCCO	Subcomponent EA-HRCCO of EA-HR
EA-HRCCZ	608	0082	SAPK-60882INEAHRCCZ	Subcomponent EA-HRCCZ of EA-HR
EA-HRCDE	608	0082	SAPK-60882INEAHRCDE	Subcomponent EA-HRCDE of EA-HR
EA-HRCDK	608	0082	SAPK-60882INEAHRCDK	Subcomponent EA-HRCDK of EA-HR
EA-HRCEG	608	0082	SAPK-60882INEAHRCEG	Sub component EA-HRCEG of EA-HR
EA-HRCES	608	0082	SAPK-60882INEAHRCES	Subcomponent EA-HRCES of EA-HR
EA-HRCFI	608	0082	SAPK-60882INEAHRCFI	Subcomponent EA-HRCFI of EA-HR
EA-HRCFR	608	0082	SAPK-60882INEAHRCFR	Subcomponent EA-HRCFR of EA-HR
EA-HRCGB	608	0082	SAPK-60882INEAHRCGB	Subcomponent EA-HRCGB of EA-HR
EA-HRCGR	608	0082	SAPK-60882INEAHRCGR	Subcomponent EA-HRCGR of EA-HR
EA-HRCHK	608	0082	SAPK-60882INEAHRCHK	Subcomponent EA-HRCHK of EA-HR
EA-HRCHR	608	0082	SAPK-60882INEAHRCHR	Subcomponent EA-HRCHR of EA-HR
EA-HRCHU	608	0082	SAPK-60882INEAHRCHU	Subcomponent EA-HRCHU of EA-HR
EA-HRCID	608	0082	SAPK-60882INEAHRCID	Subcomponent EA-HRCID of EA-HR
EA-HRCIE	608	0082	SAPK-60882INEAHRCIE	Subcomponent EA-HRCIE of EA-HR
EA-HRCIN	608	0082	SAPK-60882INEAHRCIN	Subcomponent EA-HRCIN of EA-HR
EA-HRCIT	608	0082	SAPK-60882INEAHRCIT	Subcomponent EA-HRCIT of EA-HR



Component	Release	SP Level	Support Package	Short Description of Component
EA-HRCUS	608	0082	SAPK-60882INEAHRCUS	Subcomponent EA-HRCUS of EA-HR
EA-HRCVE	608	0082	SAPK-60882INEAHRCVE	Subcomponent EA-HRCVE of EA-HR
EA-HRCZA	608	0082	SAPK-60882INEAHRCZA	Subcomponent EA-HRCZA of EA-HR
EA-HRGXX	608	0082	SAPK-60882INEAHRGXX	Subcomponent EA-HRGXX of EA-HR
EA-HRRXX	608	0082	SAPK-60882INEAHRRXX	Subcomponent EA-HRRXX of EA-HR
EA-PS	805	0000	-	SAP Enterprise Extension Public Services
FI-CAX	805	0000	-	FI-CA Extended
INSURANCE	805	0000	-	SAP Insurance
IS-OIL	805	0000	-	IS-OIL
IS-PRA	805	0000	-	SAP IS-PRA
IS-PS-CA	805	0000	-	IS-PUBLIC SECTOR CONTRACT ACCOUNTING
IS-UT	805	0000	-	SAP Utilities/Telecommunication
S4COREOP	105	0000	-	S/4HANA, On-Premise only parts
S4DEPREC	105	0000	-	S/4HANA, deprecation parts
GBX01HR	600	0017	SAPK-60017INGBX01HR	FIORI X1 HCM
GBX01HR5	605	0015	SAPK-60515INGBX01HR5	FIORI X1 HCM
SRA004	600	0011	SAPK-60011INSRA004	Create Travel Request OData Integration
UIAPFI70	800	0000	-	UI SFIN
UIHR001	100	0017	SAPK-10017INUIHR001	UI for ERP Human Capital Management
UIHR002	100	0011	SAPK-10011INUIHR002	UI for ERP Human Capital Management 100
UIS4HOP1	600	0000	-	UI for S/4HANA On Premise
PERSONAS	300	0010	SAPK-30010INPERSONAS	PERSONAS - SAP GUI PERSONALISATION
ST-A/PI	01U_731	0000	-	Servicetools for SAP Basis 731 and higher

### 6.1.2 SAP NetWeaver 7.50 application server JAVA with Adobe Document Services installed

Product Name	Name	Version	Vendor	Description
SAP NETWAVER J2EE	7.50	16	sap.com	SAP NETWEAVER 7.5: Adobe Document Services
SAP NETWAVER J2EE	7.50	16	sap.com	SAP NETWEAVER 7.5: Application Server Java

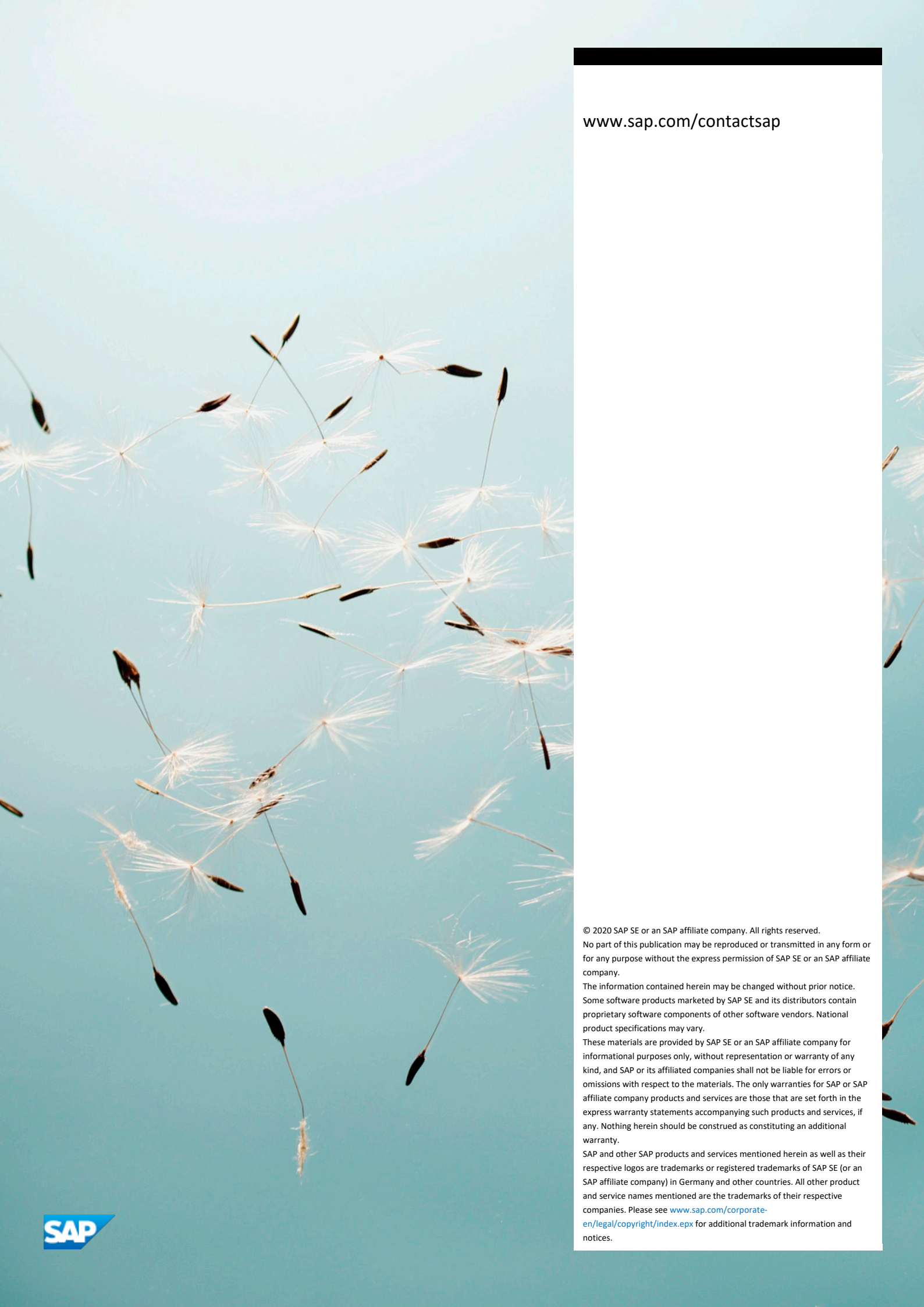
---

### 6.1.3 Windows Remote Desktop

- SAP GUI for Windows 7.60
- SAP HANA Studio & ABAP Development Tools (2020-06)
- SAP Lumira 2.0 (Discovery & Designer)
- Google Chrome
- Mozilla Firefox

### 6.1.4 SAP BusinessObjects BI Platform 4.2

- SBOP BI PLATFORM 4.2 SP07 SERVER LINUX (64B)
- SAP Lumira Server for BI Platform



[www.sap.com/contactsap](http://www.sap.com/contactsap)

© 2020 SAP SE or an SAP affiliate company. All rights reserved.

No part of this publication may be reproduced or transmitted in any form or for any purpose without the express permission of SAP SE or an SAP affiliate company.

The information contained herein may be changed without prior notice. Some software products marketed by SAP SE and its distributors contain proprietary software components of other software vendors. National product specifications may vary.

These materials are provided by SAP SE or an SAP affiliate company for informational purposes only, without representation or warranty of any kind, and SAP or its affiliated companies shall not be liable for errors or omissions with respect to the materials. The only warranties for SAP or SAP affiliate company products and services are those that are set forth in the express warranty statements accompanying such products and services, if any. Nothing herein should be construed as constituting an additional warranty.

SAP and other SAP products and services mentioned herein as well as their respective logos are trademarks or registered trademarks of SAP SE (or an SAP affiliate company) in Germany and other countries. All other product and service names mentioned are the trademarks of their respective companies. Please see [www.sap.com/corporate-en/legal/copyright/index.epx](http://www.sap.com/corporate-en/legal/copyright/index.epx) for additional trademark information and notices.