

Document Version: 1.0 – 2018-06-04

Getting Started with SAP S/4HANA 1709 FSP00 Chemicals Trial with Industry Best Practices: Fully Activated Landscape on SAP Cloud Appliance Library



Table of Contents

1	Introduction	4
1.1	About the Solution – Technical Components	4
1.2	More Information and Support.....	5
1.3	Operating System and Platform Users.....	5
1.4	About the Solution – Business Content	8
1.5	Security Aspects.....	9
1.6	Solution Usage and Licenses.....	10
1.6.1	SAP Free Trial License Agreement	10
1.6.2	SAP Product License Agreement.....	11
2	Solution Provisioning in SAP Cloud Appliance Library	13
2.1	Prerequisite: Possess a Cloud Provider Account	13
2.2	Access SAP Cloud Appliance Library (SAP CAL)	13
2.3	Create Your System Instance Within the SAP CAL Console	14
3	Connecting to Your Solution.....	15
3.1	Choose Your Option for Connecting to the Appliance: Windows Remote Desktop or Local PC	15
3.2	Option 1: System Access via Embedded Windows Remote Desktop frontend Server Need to Be Updated After	15
3.3	Option 2: System Access via Local PC	17
3.3.1	Mapping local / etc / hosts File.....	17
3.3.2	Configure ";*.dummy.nodomain" for Web Browser	17
3.3.3	Install SAP Client Software Locally	18
3.4	Connecting to SAP S4HANA and SAP HANA DB	19
3.4.1	Connecting to SAP S/4HANA via Fiori Launchpad	19
3.4.2	Connecting to SAP S/4HANA via SAP GUI	19
4	Evaluate Business Content and Processes for Pre-Deployed Scenarios	22
4.1	Pre-Configured Demo Guide	22
4.2	SAP Best Practices in General	22
4.3	SAP S/4HANA Chemicals Trial with Industry Best Practices Content	23

4.4	SAP Best Practices for SAP S/4HANA (On-Premise) 1709 FPS00 (Optional).....	24
4.5	SAP Best Practices Administration Guide and SAP Note.....	25
5	Additional Information.....	26
5.1	Integrated User Assistance ('Web Assistant').....	26
5.2	Calling a Web-Based ABAP Transaction	27
6	Appendix.....	28
6.1	Installed Technical Component Details.....	28
6.1.1	SAP NetWeaver 7.52 Application Server ABAP Incl. SAP S/4HANA 1709 FPS00	28
6.1.2	SAP NetWeaver 7.50 Application Server JAVA with Adobe Document Services Installed	32

1 Introduction

This guide provides information about SAP S/4HANA Chemicals trial with industry best practices

- Fully Activated Landscape on SAP Cloud Appliance Library, and includes:

- Technical components and business content within the solution.
- System access information after you create your own solution instance.
- Evaluation of business content.

This guide focuses on system landscape aspects as well as the steps to get the appliance initially available in SAP Cloud Appliance Library.

A general introduction into the appliance and the usage as trial or sandbox system for SAP S/4HANA can be found on <https://blogs.sap.com/?p=564532>

More detailed information sources are also mentioned in chapter 4 of this guide.

Known issues will be continuously updated in this blog: <https://blogs.sap.com/?p=575308>

A note on browsers:

With Mozilla Firefox, some of the Fiori applications in this version of the trial do not work 100% correctly (e.g. overview pages in MM or SD area).

Internet Explorer (esp. on the remote desktop) provides some additional security settings that might prevent all apps running correctly.

Google Chrome doesn't have any known limitations; hence, we recommend Google Chrome as browser if possible.

Unfortunately, it cannot be delivered pre-installed on the Remote Desktop of the trial, so you must install it as a one-time step on the remote desktop (Chrome download page is [here](#), pick the version for Windows 10/8.1/8/7 64-bit).

For all browsers, you need to add the Fiori Launchpad to the trusted sites since the certificates in this trial are no signed/trusted. The screens and needed clicks will vary depending on the browser.

1.1 About the Solution – Technical Components

The SAP S/4HANA Chemicals trial with industry best practices.

- Fully Activated Landscape on SAP Cloud Appliance Library consists of 3 instances:

1. Windows Remote Desktop
2. SAP NetWeaver 7.52 application server ABAP incl. SAP S/4HANA 1709 FPS00
3. SAP NetWeaver 7.50 application server JAVA (SAP ASE as database) with Adobe

Please refer to the Appendix for details about technical software components included in this solution.

1.2 More Information and Support

A blog with more information can be found on <https://blogs.sap.com/?p=564532>.

If you are using the 30-day trial in SAP CAL (i.e. you haven't licensed a CAL subscription package), support is done via the SAP Community. Please ask a question in

<https://answers.sap.com/questions/metadata/22943/sap-s4hana.html>

If you have licensed the CAL subscription package, you can either ask a question in the above community or [open an incident](#) on

- component BC-VCM-CAL for CAL & connectivity issues
- sub-components of SV-CLD-... for application errors:

1.3 Operating System and Platform Users

If you need OS access, you must use SSH connectivity.

Use the default user root and the private key for the instance that is automatically generated while the SAP Cloud Appliance Library activates your instance. You can either store the key file within SAP CAL as attachment to your instance, or download it to a local secure file share on your computer.

Information how to connect using PuTTY can be found [here](#).

The root user on Linux operating system level is defined as follows:

Parameter ID	Parameter Value	Note
OS User Name	root	The default OS Administrator user for Linux SUSE.
OS Password	<none>	Use the generated private key with SSH tools

The administration users for HANA and ABAP on operating system level are defined as follows:

Parameter ID	Parameter Value	Note
HANA administrator name	HDBADM	Additional user for HANA lifecycle management –

Parameter ID	Parameter Value	Note
		start/stop, administration functions, recovery.
HANA administrator password	<Master Password>	The password is the same as the master password provided during instance creation in the SAP Cloud Appliance Library.
HANA SYSTEM user name	SYSTEM	
HANA SYSTEM user password	<Master Password>	The password is the same as the master password provided during instance creation in the SAP Cloud Appliance Library.
ABAP administrator name	s4hadm	Additional user for ABAP lifecycle management – start/stop, administration, functions, recovery.
ABAP administrator password	<Master Password>	The password is the same as the master password provided during instance creation in the SAP Cloud Appliance Library.
SAP Web Dispatcher administrator name (default)	BPINST	
SAP Web Dispatcher administrator password (default)	Welcome1	

The administration users for ASE and JAVA on operating system level are defined as follows:

Parameter ID	Parameter Value	Note
ASE administrator name	sybadm	Additional user for ASE lifecycle management – start/stop, administration, functions, recovery.
ASE administrator password	<Master Password>	The password is the same as the master password provided during instance creation in the SAP Cloud Appliance Library.
JAVA administrator name	Administrator	Additional user for JAVA lifecycle management – start/stop,

Parameter ID	Parameter Value	Note
		administration, functions, recovery.
JAVA administrator password	Welcome1	The password is the same as the master password provided during instance creation in the SAP Cloud Appliance Library.

The administration users for MS Windows Remote Desktop are defined as follows:

Parameter ID	Parameter Value	Note
Administrator name	Administrator	Administration user (depending on your domain setup, you might need to use .\Administrator)
Administrator password	<Master Password>	The password is the same as the master password provided during instance creation in the SAP Cloud Appliance Library.

Please note the restrictions for logging on to the remote desktop:

- Only one concurrent logon session with user Administrator is possible at the same time
- Only two concurrent users can log on to the remote desktop at the same time i.e. you will have to create another user besides Administrator if you want to log on with two users in parallel

Additional users on operating system level are listed below:

Parameter ID	Parameter Value	Note
<SID>adm User Group	sapsys	Group containing all <SID>adm users (should be a group in a central user storage like LDAP, NIS, or Active Directory)
SAP System Administrator	daaadm	
SAP System Administrator password	<Master Password>	The password is the same as the master password provided during instance creation in the SAP Cloud Appliance Library.

1.4 About the Solution – Business Content

The SAP S/4HANA, on-premise edition - Fully Activated Landscape on SAP Cloud Appliance Library provides you with a pre-configured SAP S/4HANA, on-premise landscape, including the following business content in dedicated ABAP clients.

Please see chapter 3 for logon procedure and users/passwords.

Client	Business Content	Sample users (all with password <i>Welcome1</i>)
100 SAP Best Practices reference client	<ul style="list-style-type: none"> • Pre-activated SAP Best Practices for SAP S/4HANA, On-Premise edition 1709 FPS00 (US) and Pre-configured SAP S/4HANA Chemicals trial with industry best practices 1709 FPS00 (US) • Customizing and transactional data in US company code • Built in SAP Fiori Apps • Preconfigured Chemicals sample processes with customizing sample data partly covered with SAP Fiori Apps. Test scripts to evaluate the processes contained in the software appliance are available here: https://rapid.sap.com/bp/BP_CHEM 	BPINST (additional users available for specific scenario. Please check the next table)

	User	Note
User Name	BPINST WS_EHS* WS_FIN* WS_MFG* WS_PLM* WS_PM* WS_PRO* WS_SALES* WS_SCP WS_SCE*	Caution: BPINST has a large number of business roles and Fiori tiles assigned. Initial loading times will be significant and not all tiles will be working properly since not all are configured. Use BPINST to browse through the Fiori tiles to understand what ins delivered with SAP S/4HANA in general. WS_* users have application related business roles and have access to the respective application web-based apps.
Password	Welcome1	
Client	100	

For more information about SAP Best Practices for SAP S/4HANA 1709, please visit:

<http://service.sap.com/s4op>

For information on the 'white-list' and 'merged-client' approach, please see [here](#)

For the Administrator Guide of SAP Best Practices for SAP S/4HANA 1709, please visit:

http://help.sap.com/s4hana_op_1709 → Additional Information → Administration Guide for the Implementation of SAP S/4HANA 1709.

* Please notice the following important notes:

(1) The US Best Practices localization have been configured without a Vertex account connected (i.e. tax codes etc. were entered manually as described in the attachments of SAP note [2330455](#)).

If you would like to use VERTEX as part of your project, please configure your own Vertex account (see http://help.sap.com/s4hana_op_1709 → Additional Information → Administration Guide for the Implementation of SAP S/4HANA → PREREQUISITE settings → Carrying out technical setup (table section 'Set up VERTEX integration').

(2) Ariba Network integration: The system allows connection to the ARIBA network using the authentication via Shared Secret, however, this requires that you use your own Ariba credentials.

In order to proceed with the testing of SAP Best Practices scope items *J82 (Ariba - Business Network Integration)* and *190 (Ariba - Integration for Finance)* scenarios, the ARIBA Network ID and the Shared Secret of the ARIBA buyer need to be maintained with the help of the specific customizing activities as detailed on http://help.sap.com/s4hana_op_1709.

(3) Financial Services Network (FSN) is not configured / connected.

(4) The organizational structure and chart of accounts are activated in client 100 as SAP Best Practices content provided.

1.5 Security Aspects

By default, some ports are opened for the security group formed by the server components of your solution instance. The access from your local computer to your system instance happens via those ports (see 'Description' what port is used where).

Virtual Machine*	Protocol	Port (open by default)	Description
JAVA	SSH	22	Used for secure connection to Linux-based server operating system
JAVA	HTTPS	50001	Used for access to SAP NetWeaver Administrator and other web-based J2EE applications
ABAP	SSH	22	Used for secure connection to Linux-based server operating system

Virtual Machine*	Protocol	Port (open by default)	Description
ABAP	HTTPS	44301 & 44300	Used for access of a local web browser to appliance (Fiori Launchpad of SAP S/4HANA)
ABAP	SAP GUI	3200	Used for access of local SAP GUI to appliance
ABAP	TCP	3300	Used for connection of ABAP Development Tools (Eclipse-based) to SAP S/4HANA ABAP repository
ABAP	TCP	30215	Used for connection of SAP HANA Studio to HANA DB

* JAVA = SAP NetWeaver 7.50 AS JAVA incl. ADS

ABAP = SAP NetWeaver 7.51 AS ABAP incl. SAP S/4HANA

You can edit/add/remove ports manually in the instance details (click on the instance link in the CAL console → Edit → Virtual Machine → Access Points).

Be aware that creating your instances in the public zone of your cloud computing platform is convenient, but less secure. We recommend that in this case, you only open port 22 (SSH) when working with Linux-based solutions, and port 3389 (RDP) when working with Windows based solutions if your business requirements allow for this.

In addition, we also recommend that you limit the access to your instances by defining a specific IP range in the Access Points settings, using [CIDR notation](#). The more complex but secure alternative is to set up a virtual private cloud (VPC) with VPN access, which is described in [this tutorial on SCN](#).

Note that when using HANA-based appliances, HANA systems are not installed individually, but cloned from a template system. Consequently, the existing root keys are cloned. For more information, see this [SAP Note 2134846 - HANA encryption key handling during system cloning](#).

For more information about security vulnerabilities, see this [community page](#).

General Security Guidelines

To access the latest version of the SAP system Security Guide, please refer to http://help.sap.com/s4hana_op_1709 → Product Documentation → Security Guide

1.6 Solution Usage and Licenses

1.6.1 SAP Free Trial License Agreement

You can start to use this solution within SAP CAL under an SAP Free Trial License Agreement for 30 days. The trial software is licensed, not sold. The Trial Software is licensed to you free of charge during the term of this Agreement. During this period, the system is up-and-running using a temporary SAP product license.

1.6.2 SAP Product License Agreement

For a longer period of usage, you can switch the solution usage from a SAP Free Trial License Agreement to a SAP Product License Agreement. This requires that you

1. own the required SAP product licenses and
2. purchase a [SAP Cloud Appliance Library subscription package](#).

Once you have fulfilled these requirements, please see [Unlocking Solutions in the SAP Cloud Appliance Library](#) how to use a solution beyond the first 30 days,

1.6.2.1 SAP Product License Keys Installation

If you want to use the solution under a SAP Product License Agreement (e.g. beyond the SAP-license-free trial), you should install the following relevant SAP product license keys:

1. SAP HANA license key, to be installed via SAP HANA Studio / Eclipse
2. SAP S/4HANA 1709 license key, to be installed via SAP Logon (tCod SLICENSE)
3. SAP NetWeaver 7.52 J2EE, to be installed via SAP NetWeaver Administrator

Note:

The SAP NetWeaver J2EE engine (JAVA stack) is used as platform for the Adobe Document Services. The separate licensing of Adobe Document Services / Interactive Forms by Adobe (IFbA) is not mandatory for SAP S/4HANA, however, the following conditions apply.

- a) The use of SAP print forms is always free of charge.
- b) For SAP Interactive Forms, using the pre-delivered interactive forms is free of charge.
- c) Also, if you make cosmetic changes to these forms, it is still free of charge.
- d) However, if you make non-cosmetic changes to the forms or create new forms, you need a separate license for Adobe Document Services / IFbA

Use the link <https://launchpad.support.sap.com/#/licensekey> to apply the related license keys:

SID	Product	Version	DB	OS	Comment
HDB	SAP HANA, platform edition	SAP HANA 2.0, platform edition	n/a	Linux	License type: SAP In-memory Appliance platform Quantity: 256 GB Memory Volume
S4H	SAP S/4HANA	SAP S/4HANA 1709 FPS00	SAP HANA	Linux	N/A
J2E	SAP NetWeaver	SAP NetWeaver 7.52	Sybase ASE	Linux	As license type, select 'J2EE - Web AS JAVA'

For more information on how to request and install product license keys, see [this SCN blog](#).

From the software license perspective, the following software licenses are required beyond the 30-day trial:

License item	License name
1	S/4HANA Finance for cash mgmt.
2	S/4HANA Finance for receivables mgmt.
3	S/4HANA Finance for receivables mgmt.
4	S/4HANA for advanced compliance reporting
5	SAP Business Planning and Consolidation, add-on for S/4HANA
6	SAP S/4HANA for advanced planning
7	SAP S/4HANA advanced Available-to-Promise
8	SAP S/4HANA for advanced Variant Configuration
9	SAP S/4HANA Extended Warehouse Management
10	SAP S/4HANA Transportation Management
11	SAP S/4HANA R&D for Enterprise Product Formulation
12	SAP S/4HANA Asset Management for resource scheduling
13	SAP EHS Management, product safety
14	SAP EHS Regulatory Content, safe data sheet
15	SAP Work Clearance Management for S/4HANA

Note: To operate the functional scope of this software appliance, certain business functions had to be pre-activated, for example cash management. The activated business functions are subject to licensing as outlined in the above-mentioned table.

2 Solution Provisioning in SAP Cloud Appliance Library

2.1 Prerequisite: Possess a Cloud Provider Account

You need to have a valid account in one of the cloud providers supported by SAP Cloud Appliance Library including the corresponding secret keys for this account.

If you already have an active cloud provider account, you can proceed directly with the next section. Otherwise, navigate to the cloud provider home page and sign up.

For more information about the supported cloud providers, see the [FAQ page](#).

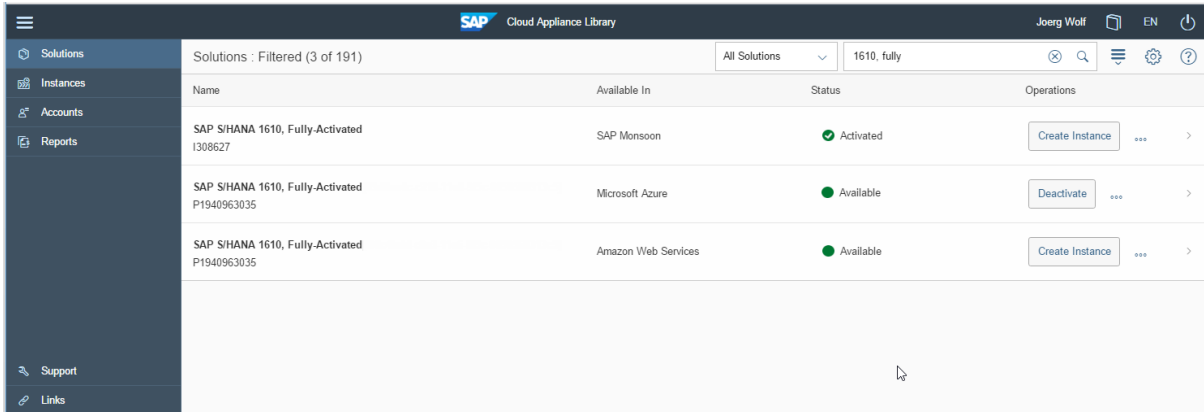
2.2 Access SAP Cloud Appliance Library (SAP CAL)

Open the SAP Cloud Appliance Library in your Web browser using the following link: <https://cal.sap.com>.

If you don't have an account in SAP CAL (this is different from the cloud provider account), please register. This will not raise any additional costs.


2.3 Create Your System Instance Within the SAP CAL Console

Once the SAP CAL console is displayed, go to *Solutions* (list of available system templates) and search for SAP S/4HANA. Click on *Create Instance* (this will become your personal system) and follow the steps on the screen. A 'Quick Start Guide' with step-by-step instructions can be found on the [SAP S/4HANA 1709 trial home page](#).



The screenshot shows the SAP Cloud Appliance Library interface. The top navigation bar includes the SAP logo, 'Cloud Appliance Library', the user name 'Joerg Wolf', and language 'EN'. The left sidebar contains navigation options: Solutions, Instances, Accounts, Reports, Support, and Links. The main content area displays a table of solutions filtered by '1610, fully'. The table has columns for Name, Available In, Status, and Operations.

Name	Available In	Status	Operations
SAP S/4HANA 1610, Fully-Activated I308627	SAP Monsoon	Activated	Create Instance ... >
SAP S/4HANA 1610, Fully-Activated P1940963035	Microsoft Azure	Available	Deactivate ... >
SAP S/4HANA 1610, Fully-Activated P1940963035	Amazon Web Services	Available	Create Instance ... >

For general information on how to create an instance (i.e. your personal system) from any solution (i.e. a template) in the SAP Cloud Appliance Library, see the official documentation of SAP Cloud Appliance Library (choose the [Support](#) → [Documentation](#) link and select the *Expand All* button  to see all documents in the structure). You can also use the context help in SAP Cloud Appliance Library by choosing the [Help](#) panel from the right side.

3 Connecting to Your Solution

3.1 Choose Your Option for Connecting to the Appliance: Windows Remote Desktop or Local PC

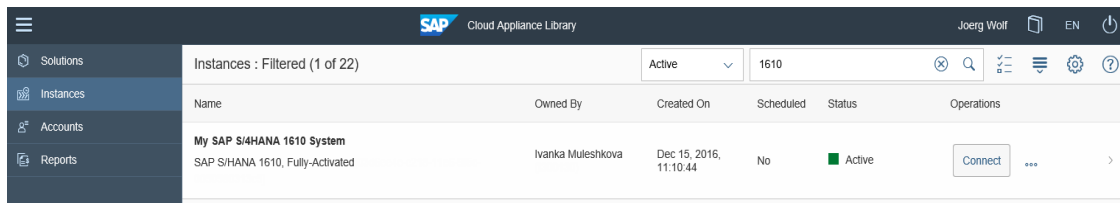
The appliance can be accessed via a preconfigured Windows remote desktop (option 1) or via client tools on your local PC (option 2).

For first steps with the appliance, we recommend access via the remote desktop since you only need to have the Windows remote desktop client installed on your PC which in most cases will be the case,

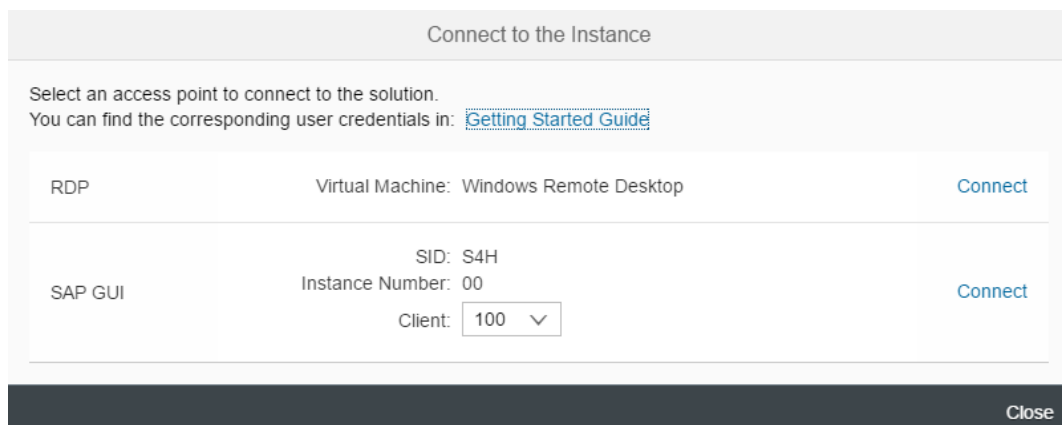
Since UI performance and flexibility are usually better via access from your local PC, please evaluate if you can use this method as standard access. It requires administrator access on your PC and 5 minutes of effort.

3.2 Option 1: System Access via Embedded Windows Remote Desktop frontend Server Need to Be Updated After

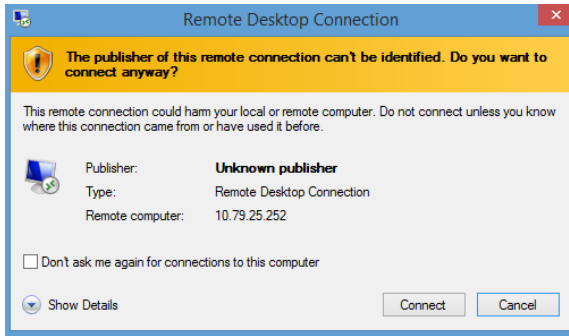
1. After your own solution instance is created (~ 60 minutes), click the [Connect](#) button in the Instances view of the console.



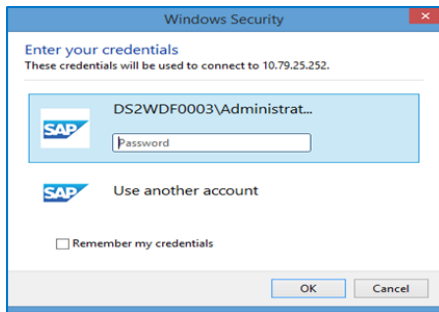
2. In the pop-up, click [Connect](#) in the RDP Virtual Machine: Windows Remote Desktop line.



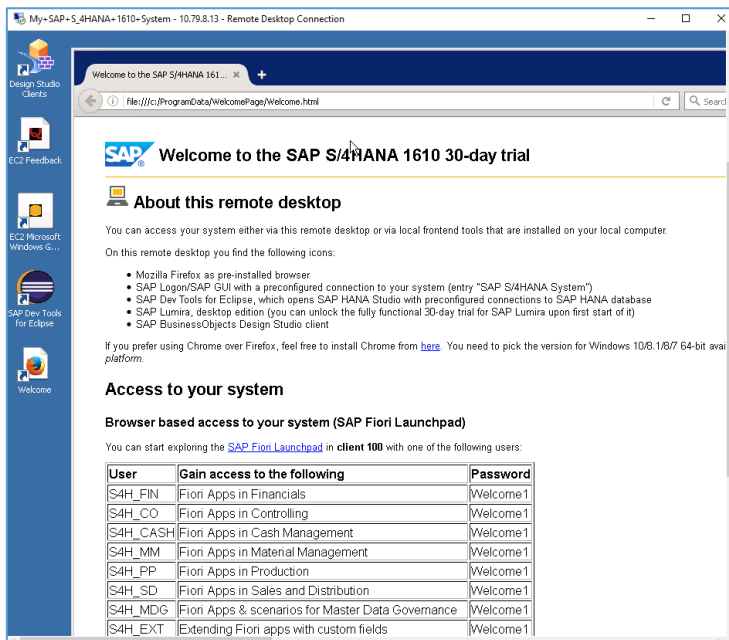
3. Confirm the pop-up window to allow Remote Desktop Connection.



4. Enter user *Administrator* and your solution master password generated during the solution instance creation.



You are now in the pre-configured Windows Frontend Server. Follow the information on the Welcome page to logon, and to run sample scenarios. More details on system connectivity can be found in section 3.3.



Note that the embedded Windows Frontend Server license allows 2 concurrent sessions (one for user *Administrator* and one for another user that you first have to create on the remote desktop).

3.3 Option 2: System Access via Local PC

3.3.1 Mapping Local / etc. / Hosts File

To logon to web access, as for example the Fiori Launchpad from your local PC, you need to ensure that you have mapped the IP address to the Hosts file on your local PC:

1. Open *Notepad* as administrator (search for *Notepad* on your computer, right mouse click, 'Run as administrator'):
2. Click *File* → *Open* and enter the following path:
For Windows operating system: c:\windows\system32\drivers\etc\hosts
For Linux operating system: /etc/hosts
3. Ensure to select *All Files (*.*)*
4. Open the *hosts* file and add the following lines to it (the IP addresses for the servers are displayed in the CAL console in the instance properties):

```
# S4H Appliance
<IP Address SAP S/4HANA / HDB server> vhcals4hci.dummy.nodomain vhcals4hci
vhcals4hcs.dummy.nodomain vhcals4hcs vcalhdbdb vcaldhdbb.dummy.nodomain
<IP Address SAP NW JAVA/ASE/ADS server> vhalj2eci.dummy.nodomain vhalj2eci
vhalj2ecs.dummy.nodomain vhalj2ecs vhalj2edb vhalj2edb.dummy.nodomain
<IP Address SAP BI Platform > bihost bihost.dummy.nodomain
```

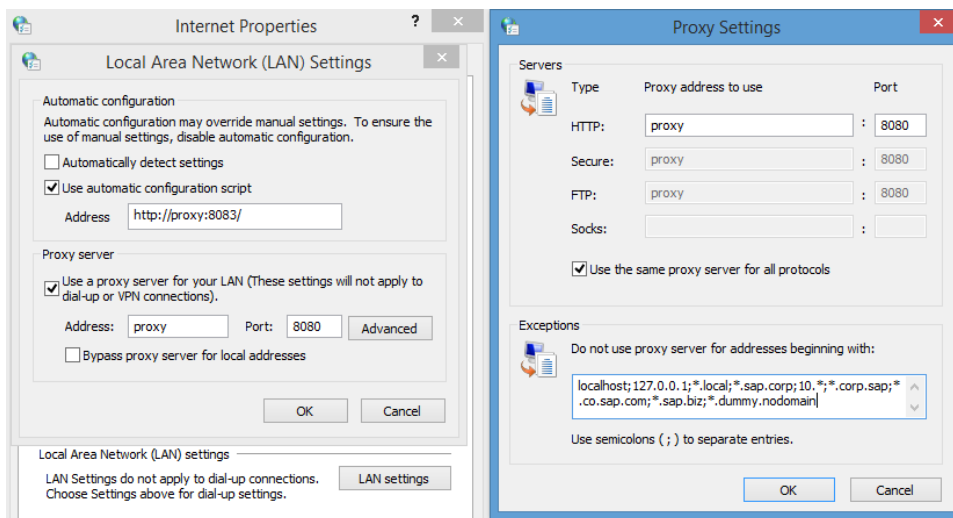
5. Save the *hosts* file and exit.

3.3.2 Configure "*.dummy.nodomain" for Web Browser

Working with the <dummy.nodomain> might require changes in your web browser, in case there is a web proxy defined (if you are unsure or detect connectivity issues, please contact your network administrator):

1. If you are using Google Chrome as web browser, follow these steps:
 1. Logon to *Chrome* → *Settings* → *Show Advanced Settings* → *Network* → *Change proxy settings* → *LAN Settings* → *Proxy Server* → *Advanced*
 2. In the *Exceptions*, add ***.dummy.nodomain** directly at the end of the existing entry.
 3. Click OK.
2. If you are using Internet Explorer as web browser, follow these steps:
 1. Logon to *Internet Explorer* → *Internet Options* → *Connections* → *LAN Settings* → *Proxy Server* → *Advanced*
 2. In the *Exceptions*, add ***.dummy.nodomain** direct at the end of the existing entry.
 3. Click OK.

See an example in the screenshot below:



3.3.3 Install SAP Client Software Locally

Note upfront:

The path to download SAP software might change after publication of this document so please search on the SAP support portal also in other places if these paths do not work.

We recommend to have SAP GUI and SAP HANA Studio installed (the latter potentially in combination with the ABAP Development tools).

3.3.3.1 SAP GUI for S/4HANA

If not already installed on your PC, download SAP GUI 7.40 or higher.

Open the SAP Support Portal Software Download page <https://support.sap.com/swdc> and search for SAP GUI.

Note:

The remote desktop has the SAP GUI incl. a defined connection to your SAP S/4HANA system already installed.

3.3.3.2 SAP HANA Studio

Download the SAP HANA Studio for your operating system from the SAP Support Portal or embed into an existing Eclipse installation as mentioned on <https://tools.hana.ondemand.com/#hanatools>

Note:

The remote desktop has the SAP HANA Studio incl. a defined connection to your SAP S/4HANA system already installed as part of the ABAP Development Tools (SAP HANA Modelling and some other perspectives in Eclipse).

3.4 Connecting to SAP S4HANA and SAP HANA DB

3.4.1 Connecting to SAP S/4HANA via Fiori Launchpad

The Fiori Launchpad follows the standard address format: Fehler! Linkverweis ungültig.

After you have mapped the IP address and hostname in the hosts file, you can access the default Fiori Launchpad at the link below.

https://vhcals4hci.dummy.nodomain:44300/sap/bc/ui5_ui5/ui2/ushell/shells/abap/FioriLaunchpad.html?sap-client=500&sap-language=EN

When you get the warning "Your connection is not private" (or similar as this depends on the browser), click "Advanced", click "Proceed to vhcals4hci.dummy.nodomain (unsafe)", and then proceed with the user/client below.

Parameter ID	Parameter Value	Note
User Name	BPINST WS_EHS* WS_FIN* WS_MFG* WS_PM* WS_PRO* WS_SALES* WS_SCP* WS_SCE*	Caution: BPINST has a large number of business roles and Fiori tiles assigned. Initial loading times will be significant and not all tiles will be working properly since not all are configured. Use BPINST to browse through the Fiori tiles to understand what ins delivered with SAP S/4HANA in general. WS_* users have application related business roles and have access to the respective application web-based apps.
Password	Welcome1	
Client	100	

3.4.2 Connecting to SAP S/4HANA via SAP GUI

Procedure

1. Start the SAP Logon.
2. Choose *New entry* → *User defined*.
3. In the System wizard, specify the following parameters:

Parameter ID		Parameter Value	Note
Application Server		<IP Address of SAP S/4HANA ABAB Virtual Machine> or alternatively, a mapped host name from your hosts file e.g. vhcals4hci (see 3.2.1)	The IP address of the S4HANA instance from the SAP Cloud Appliance Library
Instance Number		00	ABAP instance number used by the appliance.
System-ID		S4H	ABAP system id used by the appliance.
Client /User and Password	100	BPINST/Welcome1	Pre-activated SAP Best Practices based on the <u>merged-client</u> approach

3.4.2.1 Connecting to HANA via SAP HANA Studio

Procedure

1. Start the installed SAP HANA Studio
2. Open the Navigator view and right click on this view. Then choose [Add System](#).

In the System wizard, specify the following parameters:

Parameter ID	Parameter Value	Note
Hostname	<IP Address of SAP S/4HANA ABAB Virtual Machine> or alternatively, a mapped host name from your hosts file e.g. vhcals4hci (see 3.2.1)	The IP address of the S4H/HANA instance from the SAP Cloud Appliance Library since the SAP HANA DB runs on the same host.
Instance Number	02	HANA instance number used for the appliance.
HANA SYSTEM User Name	SYSTEM	Default administrator user for HANA access to HANA
Password SYSTEM User Name	<Master Password>	The password is the same as the master password provided during instance creation in the SAP Cloud Appliance Library.
User for HANA Rules Framework	HRF_TECH_USER	Background user in HANA used

Parameter ID	Parameter Value	Note
Password for HANA Rules Framework	Welcome1	

The system ID of the database is HDB. It is recognized automatically via the host name.

3.4.2.2 Connecting to SAP JAVA Administrator Portal

Enter the URL <http://vhcalj2eci.dummy.nodomain:50000/> into your browser (this works only if you have maintained your host file).

If you haven't maintained the hosts file yet the URL Fehler! Linkverweis ungültig. will also work. Administrator user and password are described in chapter 1.3.

4 Evaluate Business Content and Processes for Pre-Deployed Scenarios

WWI Server Configuration

If you want to use EHSM substance reporting, such as for Safety Data Sheet creation, you need to have a WWI generation server in place. To connect to and to install the WWI generation server in a network on your local PC, check configuration guide *EHSM Basics (850) as of chapter 2.6 Creating RFC Destination for WWI Generation Server*. You can access the configuration guide in the SAP Best Practices Explorer https://rapid.sap.com/bp/BP_CHEM, either:

- a) As part of a collective content documentation contained in the Content Library or
- b) Individually under configuration-related documentation, such as for scope item EHS Management: Substance Volume Tracking (Purchasing)

Manual tax configuration (without vertex integration)

This fully activated software appliance comes without a Vertex integration. To use dedicated test scripts in which prices and taxes play a role, such as in Sales and Distribution, the US Tax Configuration must be manually set up in your instance. The following document provides the minimum required US tax configuration steps: [2247743 - SAP Best Practices for S/4HANA, on premise edition \(USA\) \(USV2\)](#), check attachment: S4HANA Manual tax configuration amendments (without Vertex Integration).docx

4.1 Pre-Configured Demo Guide

You can access the business process description in the SAP Best Practices Explorer https://rapid.sap.com/bp/BP_CHEM and you can also go on the SAP S/4HANA, trial landing page <https://go.sap.com/cmp/oth/crm-s4hana/s4hana-on-premise.html>, you can find a **Demo Guide**, which describes end-to-end business processes, such as Order-to-Cash; Procure-to-Pay; Plan-to-Production, and others.

4.2 SAP Best Practices in General

To evaluate SAP Best Practices for SAP S/4HANA please see <http://service.sap.com/s4op>. There, you can find process diagrams, test scripts and configuration guides for the SAP Best Practices.

4.3 SAP S/4HANA Chemicals Trial with Industry Best Practices Content

To evaluate the content for SAP S/4HANA Chemicals trial with industry best practices, you can access https://rapid.sap.com/bp/BP_CHEM (access level "public" for selected content, to access all contents log on with your "S-User").

The below mentioned table shows which content can be accessed by which target group requiring which authorization level. All contents can also be downloaded via the so-called content library (exception: package presentations).

Type of content	Content	Content description	Available for access to	Access Level
Process related	Scope item fact sheets	One pagers depicting each scope item	Partners, SAP employees, customers	Public
	Test scripts (business process description)	Detailed document guiding you step by step through each scope item	Partners, SAP employees, customers	Public
	Process models	Graphical models outlining the process flow for each scope item	Partners, SAP employees, customers	Public
Package related	Package fact sheet	Package one-pager depicting the software appliance	Partners, SAP employees, customers	Public
	Package presentation	Presentation describing the scope, business content and consumption options of the software appliance	Partners, SAP employees	S-User required
	Sales one pager	One pager describing the software appliance	Partners, SAP employees	S-User required
Configuration content	Building block fact sheets (configuration fact sheet)	One pager depicting each configuration guide	Partners, SAP employees, customers	S-User required, content library download

Type of content	Content	Content description	Available for access to	Access Level
	Configuration guides	Reference documents outlining how the scope items have been configured in the software appliance	Partners, SAP employees, customers	S-User required, content library download

To evaluate the Chemicals-specific processes as delivered as part of the SAP S/4HANA Chemicals trial with industry best practices, use the test scripts as a click-through guidance.

DISCLAIMER:

All documentation is released for non-production use cases only. It is not released for configuring a system at customer premises that is intended to go live.

4.4 SAP Best Practices for SAP S/4HANA (On-Premise) 1709 FPS00 (Optional)

The Chemicals-specific software appliance was built on the foundation basis of a fully-configured SAP Best Practices for SAP S/4HANA (on premise) 1709 FPS00. This chapter gives you some background information on this foundation package covering cross-industry scenarios and where to best evaluate and experience it.

To evaluate SAP Best Practices for SAP S/4HANA, on premise content, you can access the SAP Best Practices Explorer <https://rapid.sap.com/bp/> → SAP S/4HANA → On premise → SAP Best Practices for SAP S/4HANA (on premise → Version: USA Localization, For SAP S/4HANA, on-premise edition 1709 → Download Content Library

For the Administrator Guide of SAP Best Practices for SAP S/4HANA, on premise edition 1709 content, please visit: http://help.sap.com/s4hana_op_1709 → Additional Information → Administration Guide for Solution Implementation of SAP S/4HANA, on premise edition

On the SAP S/4HANA, on-premise trial landing page <https://go.sap.com/cmp/oth/crm-s4hana/s4hana-on-premise.html>, you can find a **Demo Guide**, which describes end-to-end business processes, such as, Order-to-Cash; Procure-to-Pay; Plan-to-Production; Self-service Procurement via Purchasing Catalog. Furthermore, you can experience the online help function for SAP S/4HANA, On-Premise 1709 product.

4.5 SAP Best Practices Administration Guide and SAP Note

For the Administrator Guide of SAP Best Practices for SAP S/4HANA 1709, please visit http://help.sap.com/s4hana_op_1709 → *Additional Information* → *Administration Guide for Solution Implementation of SAP S/4HANA, on-premise edition*.

This guide has been the basis for creating this appliance.

The central SAP Note for this appliance is <https://launchpad.support.sap.com/-/notes/2457094>

5 Additional Information

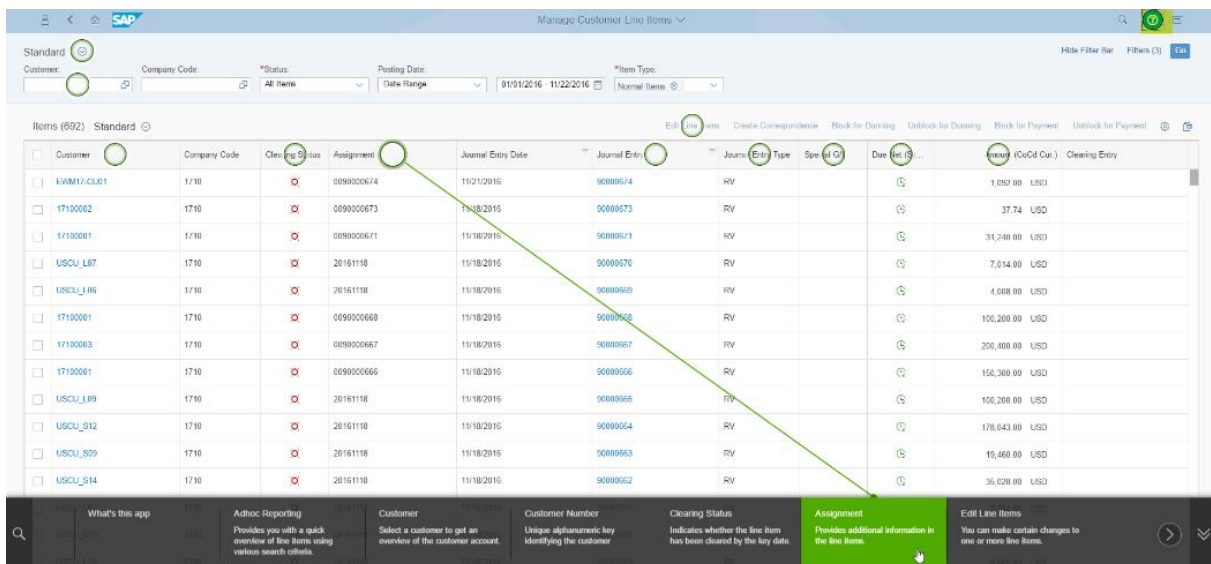
5.1 Integrated User Assistance ('Web Assistant')

You can also explore the integrated user assistance of the SAP Fiori Launchpad that gives users in-context-help for a select number of Fiori apps.

For Fiori apps that are enabled for the Web Assistant, you will find a question mark in a circle on the upper right corner of your browser. When you click on it, help items will be displayed for this tile.

As an example, open the [Manage Customer Line Items](#) app with user S4H_FIN (password Welcome1, language EN, client 500).

Once the page is loaded, click on the question mark icon and hover over the respective topics to see help content.



Notes:

1. The question mark icon will only be displayed on pages where an online help entry has been defined by SAP.
2. If you create your own solution **in public cloud** (i.e. no proxy needed), you can experience the online help function without changing any parameters.
If you create your own solution **via VPN as extension to your company network** (i.e. the proxy settings of your company are used), you will need to adjust the web dispatcher configuration parameters accordingly by maintaining the parameters "wdisp/system_xx" following the web dispatcher guide on http://help.sap.com/saphelp_nw75/helpdata/en/48/99d142ee2b73e7e10000000a42189b/frameset.htm → Tasks → Parameterization/configuration

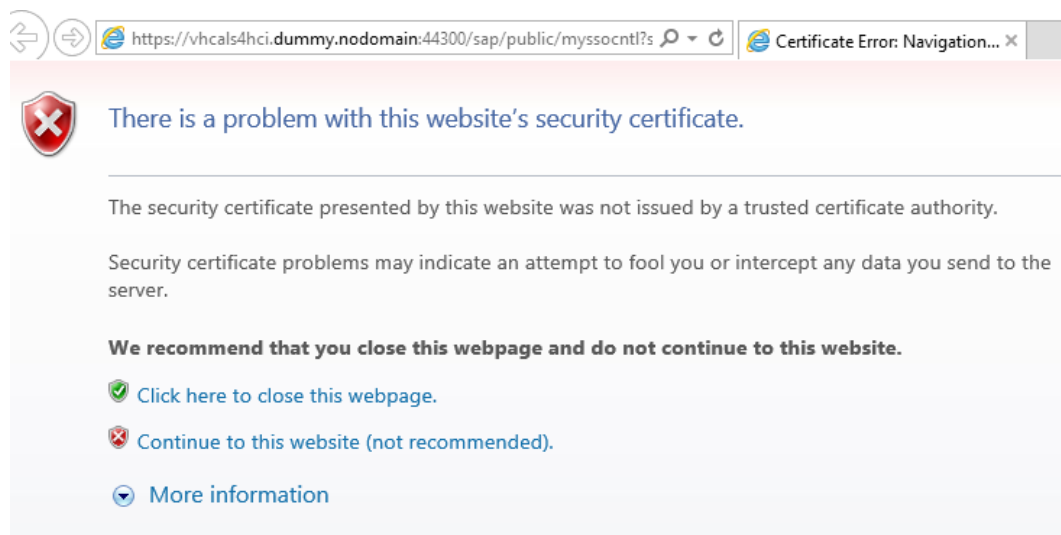
5.2 Calling a Web-Based ABAP Transaction

If you call any web based transaction via a transaction from the ABAP layer (for example, transactions NWBC or BRF+), a blank browser page will show up.

The root cause of this behavior are the self-signed certificates and trust relationship between your browser and the server called when running the transaction.

The workaround for eliminating this behavior is to launch the web-based transactions for a second time from SAP GUI while add the certificate to the IE trust root certificates as follows (instead of IE, it can also be another browser called on your pc).

1. Call the transaction that launches the web application (for example, NWBC)
2. A browser window with a certificate warning will pop up (exact message depends on browser version)



3. Select *Continue to this website* and you will see a message like this and an empty browser page (exact message depends on browser)



4. Leave the browser session open and launch the same transaction again from SAP GUI. This time, the transaction will open in the browser.

6 Appendix

6.1 Installed Technical Component Details

6.1.1 SAP NetWeaver 7.52 Application Server ABAP Incl. SAP S/4HANA 1709 FPS00

Installed Software Components

Component	Release	SP Level	Support Package	Short description of component
SAP_BASIS	752	0	-	SAP Basis Component
SAP_ABA	75C	0	-	Cross-Application Component
SAP_GWFND	752	0	-	SAP Gateway Foundation 7.40
SAP_UI	752	0	-	User Interface Technology 7.40
ST-PI	740	6	SAPK-74006INSTPI	SAP Solution Tools Plug-In
SAP_BW	752	0	-	SAP Business Warehouse
UIBAS001	300	0	-	UI for Basis Applications 1.0
MDG_FND	802	0	-	MDG Foundation
S4FND	102	0	-	Foundation 102
MDG_APPL	802	0	-	MDG Applications
MDG_UX	802	0	-	MDG Additional User Interface
S4CORE	102	0	-	S4CORE
SAP_HR	608	42	SAPKE60842	Human Resources
SAP_HRCAE	608	42	SAPK-60842INSAPHRCAE	Subcomponent SAP_HRCAE of SAP_HR
SAP_HRCAR	608	42	SAPK-60842INSAPHRCAR	Subcomponent SAP_HRCAR of SAP_HR
SAP_HRCAT	608	42	SAPK-60842INSAPHRCAT	Subcomponent SAP_HRCAT of SAP_HR
SAP_HRCAU	608	42	SAPK-60842INSAPHRCAU	Subcomponent SAP_HRCAU of SAP_HR
SAP_HRCBE	608	42	SAPK-60842INSAPHRCBE	Subcomponent SAP_HRCBE of SAP_HR
SAP_HRCBG	608	42	SAPK-60842INSAPHRCBG	Subcomponent SAP_HRCBG of SAP_HR
SAP_HRCBR	608	42	SAPK-60842INSAPHRCBR	Subcomponent SAP_HRCBR of SAP_HR
SAP_HRCCA	608	42	SAPK-60842INSAPHRCCA	Subcomponent SAP_HRCCA of SAP_HR
SAP_HRCCH	608	42	SAPK-60842INSAPHRCCH	Subcomponent SAP_HRCCH of SAP_HR
SAP_HRCCL	608	42	SAPK-60842INSAPHRCCL	Subcomponent SAP_HRCCL of SAP_HR

SAP_HRCCN	608	42	SAPK-60842INSAPHRCCN	Subcomponent SAP_HRCCN of SAP_HR
SAP_HRCCO	608	42	SAPK-60842INSAPHRCCO	Subcomponent SAP_HRCCO of SAP_HR
SAP_HRCCZ	608	42	SAPK-60842INSAPHRCCZ	Subcomponent SAP_HRCCZ of SAP_HR
SAP_HRCDE	608	42	SAPK-60842INSAPHRUDE	Subcomponent SAP_HRCDE of SAP_HR
SAP_HRCDK	608	42	SAPK-60842INSAPHRCDK	Subcomponent SAP_HRCDK of SAP_HR
SAP_HRCEG	608	42	SAPK-60842INSAPHRCEG	Subcomponent SAP_HRCEG of SAP_HR
SAP_HRCES	608	42	SAPK-60842INSAPHRCES	Subcomponent SAP_HRCES of SAP_HR
SAP_HRCFI	608	42	SAPK-60842INSAPHRCFI	Subcomponent SAP_HRCFI of SAP_HR
SAP_HRCFR	608	42	SAPK-60842INSAPHRCFR	Subcomponent SAP_HRCFR of SAP_HR
SAP_HRCGB	608	42	SAPK-60842INSAPHRGCB	Subcomponent SAP_HRCGB of SAP_HR
SAP_HRCGR	608	42	SAPK-60842INSAPHRGCR	Subcomponent SAP_HRCGR of SAP_HR
SAP_HRCHK	608	42	SAPK-60842INSAPHRCHK	Subcomponent SAP_HRCHK of SAP_HR
SAP_HRCHR	608	42	SAPK-60842INSAPHRCHR	Subcomponent SAP_HRCHR of SAP_HR
SAP_HRCHU	608	42	SAPK-60842INSAPHRCHU	Subcomponent SAP_HRCHU of SAP_HR
SAP_HRCID	608	42	SAPK-60842INSAPHRCID	Subcomponent SAP_HRCID of SAP_HR
SAP_HRCIE	608	42	SAPK-60842INSAPHRDIE	Subcomponent SAP_HRCIE of SAP_HR
SAP_HRCIN	608	42	SAPK-60842INSAPHRDIN	Subcomponent SAP_HRCIN of SAP_HR
SAP_HRCIT	608	42	SAPK-60842INSAPHRDIT	Subcomponent SAP_HRCIT of SAP_HR
SAP_HRCJP	608	42	SAPK-60842INSAPHRDJP	Subcomponent SAP_HRCJP of SAP_HR
SAP_HRCRKR	608	42	SAPK-60842INSAPHRCKR	Subcomponent SAP_HRCRKR of SAP_HR
SAP_HRCRKW	608	42	SAPK-60842INSAPHRCKW	Subcomponent SAP_HRCRKW of SAP_HR
SAP_HRCRZ	608	42	SAPK-60842INSAPHRCKZ	Subcomponent SAP_HRCRZ of SAP_HR
SAP_HRCMX	608	42	SAPK-60842INSAPHRDIX	Subcomponent SAP_HRCMX of SAP_HR
SAP_HRCMY	608	42	SAPK-60842INSAPHRDIX	Subcomponent SAP_HRCMY of SAP_HR
SAP_HRCNL	608	42	SAPK-60842INSAPHRDNL	Subcomponent SAP_HRCNL of SAP_HR
SAP_HRCNO	608	42	SAPK-60842INSAPHRDNO	Subcomponent SAP_HRCNO of SAP_HR
SAP_HRCNZ	608	42	SAPK-60842INSAPHRDNCZ	Subcomponent SAP_HRCNZ of SAP_HR
SAP_HRCOM	608	42	SAPK-60842INSAPHRDRCOM	Subcomponent SAP_HRCOM of SAP_HR
SAP_HRCRPH	608	42	SAPK-60842INSAPHRDRCPH	Subcomponent SAP_HRCRPH of SAP_HR
SAP_HRCRPL	608	42	SAPK-60842INSAPHRDRCPL	Subcomponent SAP_HRCRPL of SAP_HR
SAP_HRCRPT	608	42	SAPK-60842INSAPHRDRCPT	Subcomponent SAP_HRCRPT of SAP_HR
SAP_HRCRQA	608	42	SAPK-60842INSAPHRDRCQA	Subcomponent SAP_HRCRQA of SAP_HR
SAP_HRCRCRO	608	42	SAPK-60842INSAPHRDRCRO	Subcomponent SAP_HRCRCRO of SAP_HR
SAP_HRCRCRU	608	42	SAPK-60842INSAPHRDRCRU	Subcomponent SAP_HRCRCRU of SAP_HR
SAP_HRCRCSA	608	42	SAPK-60842INSAPHRDRCRCSA	Subcomponent SAP_HRCRCSA of SAP_HR
SAP_HRCRSE	608	42	SAPK-60842INSAPHRDRCRSE	Subcomponent SAP_HRCRSE of SAP_HR

SAP_HRCSG	608	42	SAPK-60842INSAPHRCSG	Subcomponent SAP_HRCSG of SAP_HR
SAP_HRCSI	608	42	SAPK-60842INSAPHRCSI	Subcomponent SAP_HRCSI of SAP_HR
SAP_HRCSK	608	42	SAPK-60842INSAPHRCSK	Subcomponent SAP_HRCSK of SAP_HR
SAP_HRCTH	608	42	SAPK-60842INSAPHRCTH	Subcomponent SAP_HRCTH of SAP_HR
SAP_HRCTR	608	42	SAPK-60842INSAPHRCTR	Subcomponent SAP_HRCTR of SAP_HR
SAP_HRCTW	608	42	SAPK-60842INSAPHRCTW	Subcomponent SAP_HRCTW of SAP_HR
SAP_HRCUA	608	42	SAPK-60842INSAPHRCUA	Subcomponent SAP_HRCUA of SAP_HR
SAP_HRCUN	608	42	SAPK-60842INSAPHRGUN	Subcomponent SAP_HRCUN of SAP_HR
SAP_HRCUS	608	42	SAPK-60842INSAPHRCUS	Subcomponent SAP_HRCUS of SAP_HR
SAP_HRCVE	608	42	SAPK-60842INSAPHRCVE	Subcomponent SAP_HRCVE of SAP_HR
SAP_HRCZA	608	42	SAPK-60842INSAPHRCZA	Subcomponent SAP_HRCZA of SAP_HR
SAP_HRGXX	608	42	SAPK-60842INSAPHRGXX	Subcomponent SAP_HRGXX of SAP_HR
SAP_HRRXX	608	42	SAPK-60842INSAPHRRX	Subcomponent SAP_HRRXX of SAP_HR
EA-DFPS	802	0	-	SAP Enterprise Extension Defense Forces & Public Security
EA-HR	608	42	SAPK-60842INEAHR	SAP Enterprise Extension HR
EA-HRCAE	608	42	SAPK-60842INEAHRCAE	Subcomponent EA-HRCAE of EA-HR
EA-HRCAR	608	42	SAPK-60842INEAHRCAR	Subcomponent EA-HRCAR of EA-HR
EA-HRCAT	608	42	SAPK-60842INEAHRCAT	Subcomponent EA-HRCAT of EA-HR
EA-HRCAU	608	42	SAPK-60842INEAHRCAU	Subcomponent EA-HRCAU of EA-HR
EA-HRCBE	608	42	SAPK-60842INEAHRCBE	Subcomponent EA-HRCBE of EA-HR
EA-HRCBG	608	42	SAPK-60842INEAHRCBG	Subcomponent EA-HRCBG of EA-HR
EA-HRCBR	608	42	SAPK-60842INEAHRCBR	Subcomponent EA-HRCBR of EA-HR
EA-HRCCA	608	42	SAPK-60842INEAHRCCA	Subcomponent EA-HRCCA of EA-HR
EA-HRCCH	608	42	SAPK-60842INEAHRCCH	Subcomponent EA-HRCCH of EA-HR
EA-HRCCL	608	42	SAPK-60842INEAHRCCL	Subcomponent EA-HRCCL of EA-HR
EA-HRCCN	608	42	SAPK-60842INEAHRCCN	Subcomponent EA-HRCCN of EA-HR
EA-HRCCO	608	42	SAPK-60842INEAHRCCO	Subcomponent EA-HRCCO of EA-HR
EA-HRCCZ	608	42	SAPK-60842INEAHRCCZ	Subcomponent EA-HRCCZ of EA-HR
EA-HRCDE	608	42	SAPK-60842INEAHRCDE	Subcomponent EA-HRCDE of EA-HR
EA-HRCDK	608	42	SAPK-60842INEAHRCDK	Subcomponent EA-HRCDK of EA-HR
EA-HRCEG	608	42	SAPK-60842INEAHRCEG	Sub component EA-HRCEG of EA-HR
EA-HRCES	608	42	SAPK-60842INEAHRCES	Subcomponent EA-HRCES of EA-HR
EA-HRCFI	608	42	SAPK-60842INEAHRCFI	Subcomponent EA-HRCFI of EA-HR
EA-HRCFR	608	42	SAPK-60842INEAHRCFR	Subcomponent EA-HRCFR of EA-HR
EA-HRCGB	608	42	SAPK-60842INEAHRCGB	Subcomponent EA-HRCGB of EA-HR
EA-HRCGR	608	42	SAPK-60842INEAHRCGR	Subcomponent EA-HRCGR of EA-HR
EA-HRCHK	608	42	SAPK-60842INEAHRCHK	Subcomponent EA-HRCHK of EA-HR

EA-HRCHR	608	42	SAPK-60842INEAHRCHR	Subcomponent EA-HRCHR of EA-HR
EA-HRCHU	608	42	SAPK-60842INEAHRCHU	Subcomponent EA-HRCHU of EA-HR
EA-HRCID	608	42	SAPK-60842INEAHCID	Subcomponent EA-HRCID of EA-HR
EA-HRCIE	608	42	SAPK-60842INEAHCIE	Subcomponent EA-HRCIE of EA-HR
EA-HRCIN	608	42	SAPK-60842INEAHCIN	Subcomponent EA-HRCIN of EA-HR
EA-HRCIT	608	42	SAPK-60842INEAHCIT	Subcomponent EA-HRCIT of EA-HR
EA-HRCJP	608	42	SAPK-60842INEAHCJP	Subcomponent EA-HRCJP of EA-HR
EA-HRCKR	608	42	SAPK-60842INEAHRCKR	Subcomponent EA-HRCKR of EA-HR
EA-HRCKW	608	42	SAPK-60842INEAHRCKW	Subcomponent EA-HRCKW of EA-HR
EA-HRCKZ	608	42	SAPK-60842INEAHRCKZ	Subcomponent EA-HRCKZ of EA-HR
EA-HRCMX	608	42	SAPK-60842INEAHRCMX	Subcomponent EA-HRCMX of EA-HR
EA-HRCMY	608	42	SAPK-60842INEAHRCMY	Subcomponent EA-HRCMY of EA-HR
EA-HRCNL	608	42	SAPK-60842INEAHCNL	Subcomponent EA-HRCNL of EA-HR
EA-HRCNO	608	42	SAPK-60842INEAHCNO	Subcomponent EA-HRCNO of EA-HR
EA-HRCNZ	608	42	SAPK-60842INEAHCNZ	Subcomponent EA-HRCNZ of EA-HR
EA-HRCOM	608	42	SAPK-60842INEAHCROM	Subcomponent EA-HRCOM of EA-HR
EA-HRCPH	608	42	SAPK-60842INEAHRCPH	Subcomponent EA-HRCPH of EA-HR
EA-HRCPL	608	42	SAPK-60842INEAHCPL	Subcomponent EA-HRCPL of EA-HR
EA-HRCPT	608	42	SAPK-60842INEAHCPT	Subcomponent EA-HRCPT of EA-HR
EA-HRCQA	608	42	SAPK-60842INEAHCQA	Subcomponent EA-HRCQA of EA-HR
EA-HRCRO	608	42	SAPK-60842INEAHCRO	Subcomponent EA-HRCRO of EA-HR
EA-HRCRU	608	42	SAPK-60842INEAHCRO	Subcomponent EA-HRCRU of EA-HR
EA-HRCSA	608	42	SAPK-60842INEAHRCSA	Subcomponent EA-HRCSA of EA-HR
EA-HRCSE	608	42	SAPK-60842INEAHCSE	Subcomponent EA-HRCSE of EA-HR
EA-HRCSG	608	42	SAPK-60842INEAHCSG	Subcomponent EA-HRCSG of EA-HR
EA-HRCSI	608	42	SAPK-60842INEAHCSCI	Subcomponent EA-HRCSI of EA-HR
EA-HRCSK	608	42	SAPK-60842INEAHCSC	Subcomponent EA-HRCSK of EA-HR
EA-HRCTH	608	42	SAPK-60842INEAHRCTH	Subcomponent EA-HRCTH of EA-HR
EA-HRCTR	608	42	SAPK-60842INEAHRCTR	Subcomponent EA-HRCTR of EA-HR
EA-HRCTW	608	42	SAPK-60842INEAHRCTW	Subcomponent EA-HRCTW of EA-HR
EA-HRCUA	608	42	SAPK-60842INEAHCUA	Subcomponent EA-HRCUA of EA-HR
EA-HRCUN	608	42	SAPK-60842INEAHCUN	Subcomponent EA-HRCUN of EA-HR
EA-HRCUS	608	42	SAPK-60842INEAHCUS	Subcomponent EA-HRCUS of EA-HR
EA-HRCVE	608	42	SAPK-60842INEAHCVE	Subcomponent EA-HRCVE of EA-HR
EA-HRCZA	608	42	SAPK-60842INEAHCZA	Subcomponent EA-HRCZA of EA-HR
EA-HRGXX	608	42	SAPK-60842INEAHRGXX	Subcomponent EA-HRGXX of EA-HR
EA-HRRXX	608	42	SAPK-60842INEAHRRX	Subcomponent EA-HRRXX of EA-HR

EA-PS	802	0	-	SAP Enterprise Extension Public Services
ECC-SE	802	0	-	ECC-SE
ERECRUIT	802	0	-	E-Recruiting
FI-CAX	802	0	-	FI-CA Extended
INSURANCE	802	0	-	SAP Insurance
IS-H	802	0	-	SAP Healthcare
IS-M	802	0	-	SAP MEDIA
IS-OIL	802	0	-	IS-OIL
IS-PRA	802	0	-	SAP IS-PRA
IS-PS-CA	802	0	-	IS-PUBLIC SECTOR CONTRACT ACCOUNTING
IS-UT	802	0	-	SAP Utilities/Telecommunication
LSOFE	802	0	-	SAP Learning Solution Front-End
GBX01HR	600	6	SAPK-60006INGBX01HR	FIORI X1 HCM
GBX01HR5	605	3	SAPK-60503INGBX01HR5	FIORI X1 HCM
SRA004	600	10	SAPK-60010INSRA004	Create Travel Request OData Integration
UIAPFI70	500	0	-	UI SFIN
UIS4HOP1	300	0	-	UI for S/4HANA On Premise
UIX01CA1	200	4	SAPK-20004INUIX01CA1	UI for Cross-Applications
BSNAGT	200	2	SAPK-20002INBSNAGT	BSN AGENT
MRSS	V2000	2	SAPK-V2002INMRSS	Multiresource Service Scheduling
MRSS_UI5	V2000	3	SAPK-V2003INMRSSUI5	Multiresource Scheduling with UI5
MSGPMCON	200	2	SAPK-20002INMSGPMCON	msg.PM Connection
PERSONAS	300	5	SAPK-30005INPERSONAS	PERSONAS - SAP GUI PERSONALISATION
ST-A/PI	01S_731	2	SAPKITAB9S	Servicetools for SAP Basis 731

6.1.2 SAP NetWeaver 7.50 Application Server JAVA with Adobe Document Services Installed

Product Name	Name	Version	Vendor	Description
SAP NETWAVER J2EE	7.50	04	sap.com	SAP NETWEAVER 7.5: Adobe Document Services

Product Name	Name	Version	Vendor	Description
SAP NETWAVER J2EE	7.50	04	sap.com	SAP NETWEAVER 7.5: Application Server Java



www.sap.com/contactsap

© 2018 SAP SE or an SAP affiliate company. All rights reserved.
No part of this publication may be reproduced or transmitted in any form or for any purpose without the express permission of SAP SE or an SAP affiliate company.
The information contained herein may be changed without prior notice. Some software products marketed by SAP SE and its distributors contain proprietary software components of other software vendors. National product specifications may vary. These materials are provided by SAP SE or an SAP affiliate company for informational purposes only, without representation or warranty of any kind, and SAP or its affiliated companies shall not be liable for errors or omissions with respect to the materials. The only warranties for SAP or SAP affiliate company products and services are those that are set forth in the express warranty statements accompanying such products and services, if any. Nothing herein should be construed as constituting an additional warranty. SAP and other SAP products and services mentioned herein as well as their respective logos are trademarks or registered trademarks of SAP SE (or an SAP affiliate company) in Germany and other countries. All other product and service names mentioned are the trademarks of their respective companies. Please see www.sap.com/corporate-en/legal/copyright/index.epx for additional trademark information and notices.