

Document Version: 1.0 – 2016-04-18

Getting Started with Focused Build on SAP Solution Manager 7.1

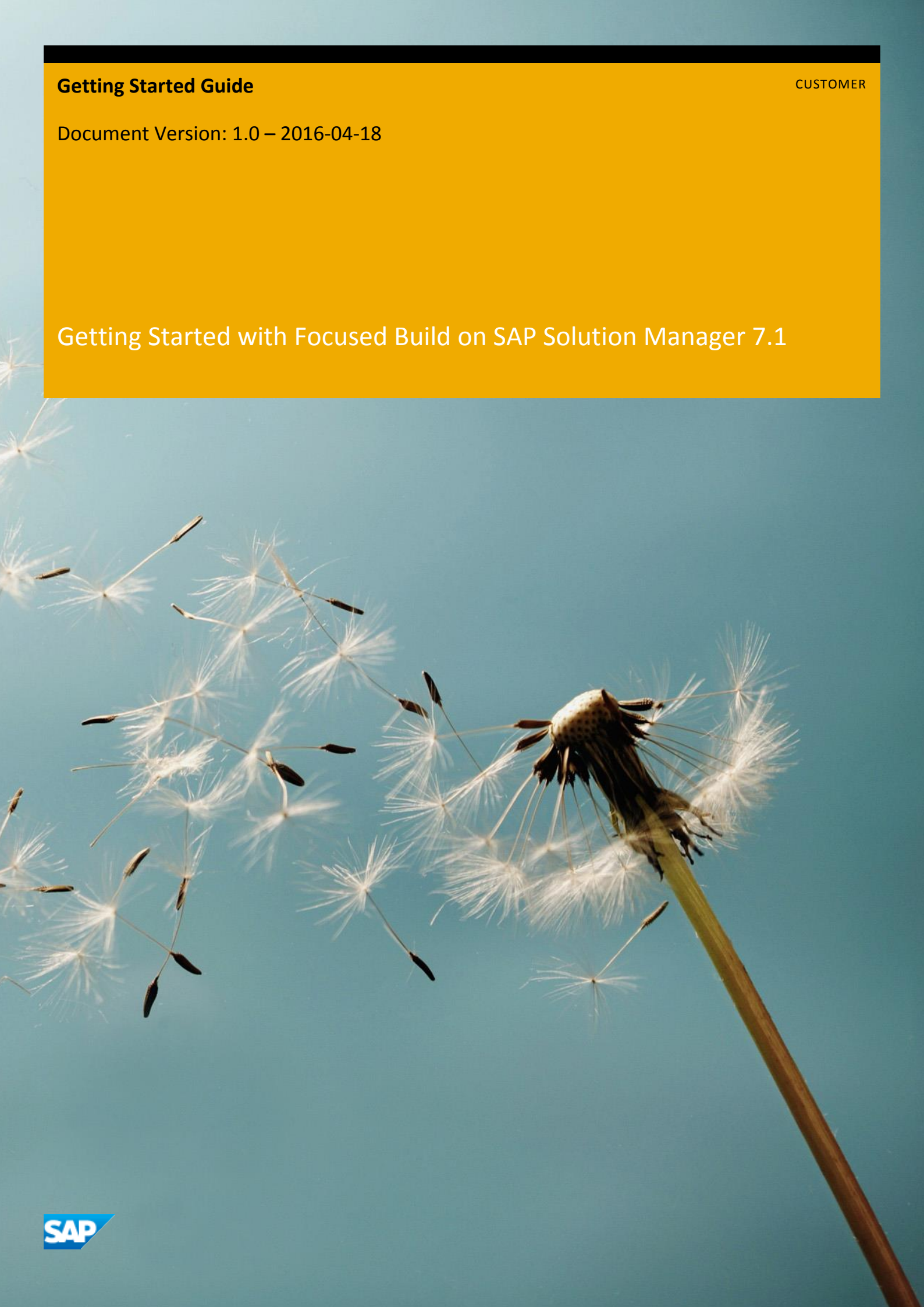


Table of Contents

1	Solution Information	3
1.1	ABAP Components	4
1.2	JAVA Components	5
1.3	ABAP Application Server Details	6
1.4	Java Application Server Details	6
1.5	SAP Solution Manager 7.1 ABAP Application Server Details	8
1.6	SAP Solution Manager 7.1	8
1.7	Technical User	9
1.8	Post Installation Steps	10
1.8.1	DBA user	10
1.8.2	Signavio	10
2	Connect to the Focused Build Solution	14
3	Licenses	15
4	Security Aspects	16
5	Solution Provisioning in SAP Cloud Appliance Library	17

1 Solution Information

This guide provides general information you need to use the solution “**Focused Build for SAP Solution Manager on SAP Solution Manager 7.1**”. The Focused Build is a ready-to-run, integrated, tool-supported **methodology** to manage requirements and software development in large, agile projects.

The purpose of this system is to allow SAP customers and partners to **evaluate** and **start** Focused Service Solutions for Requirements-to-Deploy solutions.

This system allows you test-drive the Focused Build solution in the cloud. The system is a fully pre-configured system that can be immediately used as no more configuration required.

The Focused Build for SAP Solution Manager delivers solutions in the following areas:

- Business Demand and Requirements Management.
- Agile development management with remote factory integration.
- Solution Readiness Dashboard: Automated visibility of solution readiness, integrated risk management
- Change and release automation.
- Collaboration across distributed development teams for global delivery

Using Focused Build, you can start to:

- Use the Solution Readiness Dashboard to track project progress from solution readiness perspective and get big-picture reporting on program and project level.
- Enrich ready-to-use work break-down structure enriched with your own specific work packages.
- Capture new business models, target operating models and requirements.
- Build Prototypes replace traditional blueprinting with business reviews every few weeks using agile methods
- Manage specifications and designs for requirements (WRICEF & gaps) in virtual project rooms and development factories.
- Manage agile development in waves and sprints Share software building blocks globally
- Test planning automation for UAT and regression testing

For more information on SAP Solution Manager 7.1's and Focused Service Solutions, see the material located on the **SAP Support Portal**.

Material Numbers

You get access to a system that has been built up using the following media:

Number	Description
51050526	SAP Solution Manager 7.1 ABAP (SAP SOLMAN 7.1 SR1 Inst. Export)
51048259	SAP ASE
51049300	ST-OST (One Service Toolset) add-on
51049983	721 EXT NUC Kernel for SWPM SP9 - Linux on X86_64
51042607	SAP SOLMAN 7.1 SR1 Java

1.1 ABAP Components

The solution comprises the following component versions:

Name	Release	Support Package Stack
SAP_BASIS	702	17
SAP_ABA	702	17
CTS_PLUG	200	16
PI_BASIS	702	17
ST-PI	2008_1_700	12
BI_CONT	707	13
GW_CORE	200	10
SAP_BS_FND	702	15
SAP_BW	702	17
UISAPUI5	100	12
UI_INFRA	100	12
IW_GIL	100	6
SAP_AP	700	33
WEBCUIF	701	14
BBPCRM	701	14
CPRXRPM	500_702	14
IW_BEP	200	10
IW_FND	250	10
ST	710	14
ST-OST	100	2
ST-BCO	710	13
RTCISM	100	0
SOCO	101	3
ST-A/PI	01R_700	1
ST-ICC	200	2
ST-ICO	150_700	46
ST-SER	701_2010_1	28

1.2 JAVA Components

Name	Version
ADSSAP	7.02 SP17 (1000.7.02.17.0.20150305072632)
BASETABLES	7.02 SP17 (1000.7.02.17.0.20150305073903)
BI_MMR	7.02 SP17 (1000.7.02.17.0.20150305073923)
BI_UDI	7.02 SP17 (1000.7.02.17.0.20150305073935)
CAF	7.02 SP17 (1000.7.02.17.0.20150305131313)
CAF-UM	7.02 SP17 (1000.7.02.17.0.20150305131320)
CORE-TOOLS	7.02 SP17 (1000.7.02.17.0.20150305074032)
EP-PSERV	7.01 SP6 (1000.7.01.6.0.20100204122813)
EP-WDC	7.01 SP6 (1000.7.01.6.0.20100108143422)
EPBC	7.01 SP6 (1000.7.01.6.0.20100108143047)
EPBC2	7.01 SP6 (1000.7.01.6.0.20100108143114)
ETPRJSCHEDULER	8.00 SP33 (1000.8.00.33.112.20140813151100)
ISAGENT	8 SP24 (8.2.4.0.20120626135042)
JLOGVIEW	7.02 SP17 (1000.7.02.17.0.20150305061100)
JSPM	7.02 SP15 (1000.7.02.15.0.20131210153000)
KM-KW_JIKS	7.02 SP17 (1000.7.02.17.0.20150305074358)
LM-SERVICE	7.10 SP14 (1000.7.10.14.1.20151005123200)
LM-TOOLS	7.02 SP17 (1000.7.02.17.2.20150507073009)
SAP-JEE	7.02 SP17 (1000.7.02.17.3.20150806075751)
SAP-JEECOR	7.02 SP17 (1000.7.02.17.9.20151008120810)
SAP_BUILD	7.01 SP7 (1000.7.01.7.0.20100610162200)
SAP_JTECHF	7.02 SP17 (1000.7.02.17.5.20150813110731)
SAP_JTECHS	7.02 SP17 (1000.7.02.17.7.20150930192214)
SWLIFECYCL	7.02 SP17 (1000.7.02.17.0.20150305132552)
UMEADMIN	7.02P17 (1000.7.02.17.1.20150813043647)

1.3 ABAP Application Server Details

Name	Value	Description
SID	ABA	System ID of the SAP system
CI Instance Number	00	The instance number of the central instance (CI)
CS Instance Number	01	The instance number of the central services (CS) instance.
Password	\${master_password}	The initial password of the master system. Note that for solution provisioning in SAP Cloud Appliance Library the password is reset with the one provided when you create an instance.
Username	DDIC SAP*	These are the standard users which you can use to access the ABAP server.
Clients	000 001 801 ,802, 803, 804	These are the standard clients available in a newly installed SAP system.

1.4 Java Application Server Details

Name	Value	Description
SID	ABA	System ID of the SAP system
CI Instance Number	00	The instance number of the central instance (CI)
CS Instance Number	02	The instance number of the central services (CS) instance.
Password	\${master_password}	The initial password of the master system. Note that for solution provisioning in SAP Cloud Appliance Library the password is reset with the one provided when you create an instance.
Username	J2ee_admin	These are the standard users which you can use to access the J2EE server. Use master password.

Database Server Details

Name	Value	Description
SID	ABA	System ID of the SAP system
DB SID	ABA	System ID of the database of the SAP system
DB Type	SYB	Type of the database
Username	SAPSA SAPSSO SA SAPSA SAPSR3DB	These are the standard users which you can use to access the database server.
Password	\${master_password}	The initial password of the master system. Note that for solution provisioning in SAP Cloud Appliance Library the password is reset with the one provided when you create an instance.

OS Users and Groups

Name	Description
<sid>adm	SAP system administrator
syb<sid>	SAP database administrator
Sapsys	Group containing all <SID>adm users (should be a group in a central user storage like LDAP, NIS, or Active Directory)

1.5 SAP Solution Manager 7.1 ABAP Application Server Details

Focused Build Users and Groups

The following users can be used to start the Focused Build components and tools. The default password for all those users is **Mango4cal**.

Name	Description
OS_QUAL_MAN	/SALM/COMP_TEST_COORDINATE
OS_PROJ_MAN	/SALM/COMP_PROJ_MANAGER
OS_PROG_MAN	/SALM/COMP_PROG_MANAGER
OS_IT_ARCHIT	/SALM/COMP_IT_ARCHITECT
OS_ALL	One Service Super User
OS_REL_MAN	/SALM/COMP_REL_MANAGER
OS_TEST_USER	/SALM/COMP_TEST_USER
OS_SIGNAVIO	Business Consultant
OS_PROJ_MEMB	SALM/COMP_PROJ_MEMBER
OS_TEST_COOR	Test coordinator
OS_TOOL_LEAD	R2D tool leader
OS_QUAL_MAN	Quality Manager

1.6 SAP Solution Manager 7.1

Solution Manager Users

Name	Password
solman_admin	\${master_password}
sapsupport	\${master_password}

1.7 Technical User

Name	Description
ADS_AGENT	Solution Manager Technical User
ADSUSER	Solution Manager Technical User
CONTENTSERV	Solution Manager Technical User
CTC2SM_ABA	Solution Manager Technical User
ES_REP_ABA	Solution Manager Technical User
SAPJSF	Solution Manager Technical User
SAPSERVICE	Solution Manager Technical User
SLD_CS_USER	SLD
SLDDSUSER	SLD
SM_ABA	Solution Manager Technical User
SM_BW_ACT	Solution Manager Technical User
SLDAPIUSER	SLD
SM_AMSC	Solution Manager Technical User
SM_EFWK	Solution Manager Technical User
SM_EXTERN_WS	Solution Manager Technical User
SM_INTERN_WS	Solution Manager Technical User
SM2CTCABA001	Solution Manager Technical User
SMD_AGT	Solution Manager Technical User
SMD_RFC	Solution Manager Technical User
SMTMABA	Solution Manager Technical User
SOLARSERVICE	Solution Manager Technical User
SOLMAN_BTC	Solution Manager Technical User
TM_ADMIN	Test Management admin

1.8 Post Installation Steps

1.8.1 DBA user

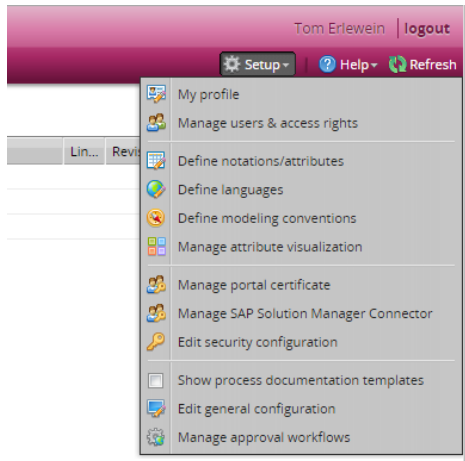
The password of the database user has to be adjusted.

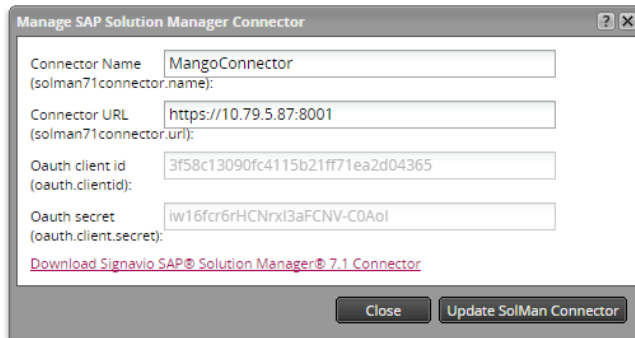
1. Start transaction “DBCO”
2. Switch to edit mode
3. Enter the master password you chose during the CAL instance creation

1.8.2 Signavio

The following steps have to be performed to manage the connectivity from the **Focused Build solution** to your **signavio**:

1. In Signavio Workspace:
Goto Setup - Manage SAP Solution Manager Connector





- a. Adapt "Connector URL" with new CAL IP-adress
 - b. Hit „Update SolMan Connector“ Button
 - c. Copy value of Oauth secret
2. Edit file `solmanconnector.properties` in Signavio Connector installation: `/usr/sap/ABA/signavio`
`solman.config.logcomp.default = Z_MANGO`
- a. Adapt the value of entry `solman71connector.url`
 - b. Insert the value of 1c to entry `oauth.client.secret`
 - c. Save the file
3. Start the connector (`./startup.sh`) from OS-Level with user ABAADM
4. Call URL `<solman71connector.url> /setup`
- a. <https://10.79.5.87:8001/setup>
5. Log on to Signavio Workspace



Authorization request

You are logged into the workspace **SAP ONE Service Workspace - TRAINING** as **Tom Erlewein** (thomas.erlewein@sap.com).

The application **MangoConnector** is requesting access to your Signavio account:

- Access and modify your data in Signavio that is related to the SAP® Solution Manager® integration (e.g. diagrams)

Do you grant the access?



6. Hit the GRANT Button
7. Check that the Authorization was successful.

Authorization was successful. See details below:

```
Access Token {"scope":"sap_solman71","expires_in":2678400,"token_type":"Bearer","refresh_token":"7890f5a7176d3d31fec802d654c2e338b1ae36aa70e2282f8f026186a383a85c80d28ee3ef6bd5f8","access_token":"(
Used
Auth b52276bb67bc7132bde857d08ba1618c4a1191d98b9e75e98a9700a7541a5a8fea173641c96a23c7
Code
Back to start
```

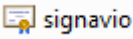
8. /Salm/Paramdata table entries

Call table /salm/Paramdata in the transaction se16 and change this entry.

Field	Value
SIGNAVIO_DOMAIN	https://editor.signavio.com
USERNAME	\${signavio user}
PASSWORD	\${signavio password}
CATEGORYID	32daa9b9af17401fa5d4cc0ba60e4a0e
STATUS_CATEGORY_ID	
PROXY_SERVICE	\${proxy port }
PROXY_HOST	\${proxy host}
TENANT	71ae9ff70c0f4bafaca51eee3a91d5d8
SYNC_STATUS	DesignCompleted
BUILD_IN_PROGRESS_CATEGORY_ID	833333664a4d47fc964fe997b1c9f17d
CAPABILITY_CATEGORY	3d914d80a9e64d9e9d00a326f9b9d187
PROJECT_ID	\${project Name}
CUSTOM_ATTRIBUTE_NAME	PROCESS_TYPE
CAPAB_SYNC_STATUS	DesignCompleted

9. Certificate Import

To connect Signavio and Solution Manager, the Signavio security certificate must be imported into Solution Manager:

- Download the certificate in Signavio from “Manage SAP Solution Manager Connector” in the setup menu.
- In Solution Manager call transaction STRUST.
- Go to folder <SSL client SSL Client (Standard)> to add the previously saved certificate from Signavio.
- Choose the button <Import Certificate> at the lower left corner.
- Select the file  and click <Confirm>.
- Click on <Add to Certificate List> and finally confirm with the <Save> button.

- System PSE
- SNC SAPCryptolib
- SSL server Standard
- SSL client SSL Client (Anonymo
- SSL client BCM
- SSL client SSL Client (Standar
- nccvsm, E2E_00
- SSL client PAYPAL
- SSL client SAPGBB
- SSL client WSSE Web Service Se
- WS Security Standard
- WS Security Other System Encry
- WS Security WS Security Keys
- File
- SSF Collaboration Integration
- SSF SAML2 Service Provider - E
- SSF SAML2 Service Provider - S
- SSF Logon Ticket

System PSE

Own Certificate

Owner:
 (Self-Signed)

Certificate List

Owner
OU=SSO_CA, O=SAP-AG, C=DE OU=J2EE, CN=E2E

Veri. PSE Password

Certificate

Owner:

Issuer:

Serial Number (Hex.):

Serial Number (Dec.):

Valid From: to

Algorithm: Key Length:

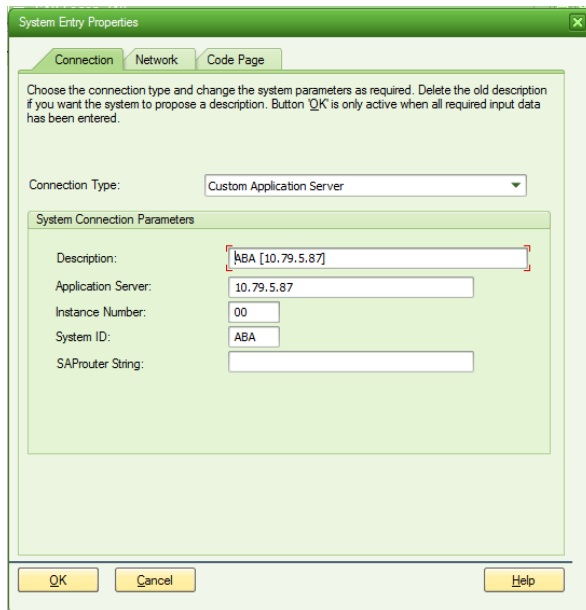
Check Sum (MD5):

Checksum (SHA1):

Import certificate Add to Certificate List

2 Connect to the Focused Build Solution

From your SAP logon create a new SAP GUI entry with the IP of your Focused Build image on instance number 00, system ABA and client 100 :



Adapt your local /etc/hosts file to map the following hosts to the network IP of you Focused Build image:

- vhalabaci vhalabaci.dummy.nodomain
- vhalabacs vhalabacs.dummy.nodomain
- vhalabadb vhalabadb.dummy.nodomain
- vhalabajcs vhalabajcs.dummy.nodomain

3 Licenses

Free Trial License Agreement

This solution could be used as a trial for the configured free period. Note that you are not allowed to install license keys under the Free Trial License Agreement.

4 Security Aspects

Be aware that creating your instances in the public zone of your cloud computing platform is convenient but less secure. Ensure that only port 22 (SSH) is opened when working with Linux-based solutions and port 3389 (RDP) when working with Windows based solutions. In addition, we also recommend that you limit the access to your instances by defining a specific IP range in the Access Points settings, using [CIDR notation](#). The more complex but secure alternative is to set up a virtual private cloud (VPC) with VPN access, which is described in [this tutorial on SCN](#).

The list below describes the ports opened for the security group formed by the server components of your solution instance:

To access back-end servers on the operating system (OS) level, use the following information:

Protocol	Port	Description
SSH	22	Used for SSH connection to Linux-based servers
RDP	3389	Used for RDP connection to Windows based servers

You must change the initial user passwords provided by SAP when you log onto the system for the first time.

Note that when using HANA based appliances, HANA systems are not installed individually but cloned from a template system. As a consequence of this cloning process, the existing root keys are cloned. For more information, see this [SAP Note 2134846 - HANA encryption key handling during system cloning](#).

5 Solution Provisioning in SAP Cloud Appliance Library

If you have a user in SAP Cloud Appliance Library, you need to meet the following prerequisites before starting to use the SAP Cloud Appliance library:

- Cloud Provider Configurations


You have a valid account in one of the cloud providers supported by SAP Cloud Appliance Library. If you already have an active cloud provider account, you can proceed directly with the next section.

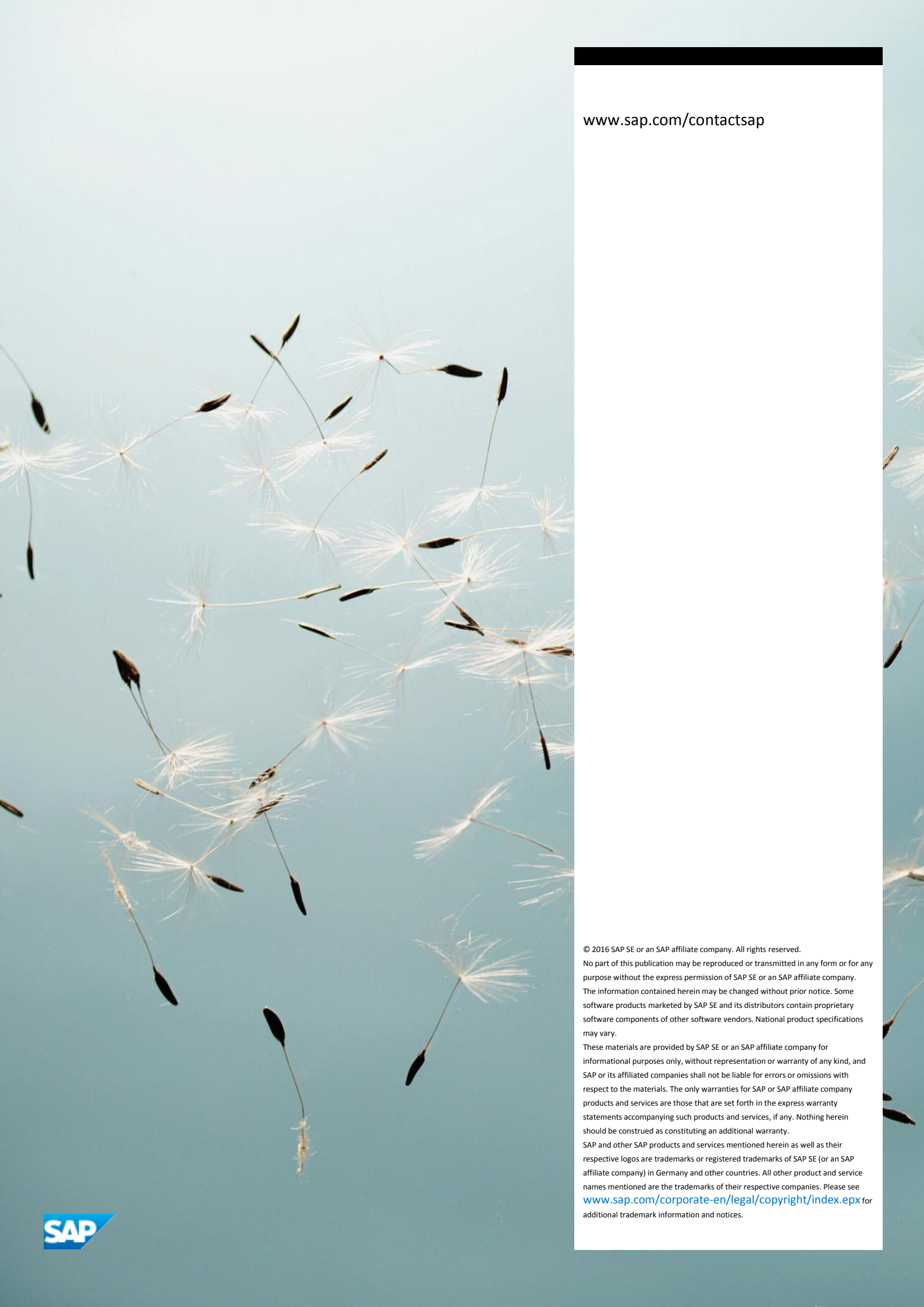
Otherwise, navigate to the cloud provider home page and sign up.

For more information about the supported cloud providers, see the [FAQ page](#).

- Navigate to SAP Cloud Appliance Library

Open the SAP Cloud Appliance Library in your Web browser using the following link: <https://cal.sap.com>

For more information about how to use solutions in SAP Cloud Appliance Library, see the official documentation of SAP Cloud Appliance Library (choose [Support](#) → [Documentation](#) link and choose  (expand all) button to see all documents in the structure). You can also use the context help in SAP Cloud Appliance Library by choosing the [Help](#) panel from the right side.



www.sap.com/contactsap

© 2016 SAP SE or an SAP affiliate company. All rights reserved.

No part of this publication may be reproduced or transmitted in any form or for any purpose without the express permission of SAP SE or an SAP affiliate company. The information contained herein may be changed without prior notice. Some software products marketed by SAP SE and its distributors contain proprietary software components of other software vendors. National product specifications may vary.

These materials are provided by SAP SE or an SAP affiliate company for informational purposes only, without representation or warranty of any kind, and SAP or its affiliated companies shall not be liable for errors or omissions with respect to the materials. The only warranties for SAP or SAP affiliate company products and services are those that are set forth in the express warranty statements accompanying such products and services, if any. Nothing herein should be construed as constituting an additional warranty.

SAP and other SAP products and services mentioned herein as well as their respective logos are trademarks or registered trademarks of SAP SE (or an SAP affiliate company) in Germany and other countries. All other product and service names mentioned are the trademarks of their respective companies. Please see www.sap.com/corporate-en/legal/copyright/index.epx for additional trademark information and notices.