

SAP How-to Guide

SAP Mobility

SAP Mobile Platform (SMP)

How To... Start an SMP 3.0 Instance

provided by SAP Mobile - Rapid Innovation Group

Applicable Releases:

SAP Mobile Platform 3.0, enterprise edition

Version 1.0

April 2015



The Best-Run Businesses Run SAP™

© Copyright 2015 SAP AG. All rights reserved.

No part of this publication may be reproduced or transmitted in any form or for any purpose without the express permission of SAP AG. The information contained herein may be changed without prior notice.

Some software products marketed by SAP AG and its distributors contain proprietary software components of other software vendors.

Microsoft, Windows, Excel, Outlook, and PowerPoint are registered trademarks of Microsoft Corporation.

IBM, DB2, DB2 Universal Database, System i, System i5, System p, System p5, System x, System z, System z10, System z9, z10, z9, iSeries, pSeries, xSeries, zSeries, eServer, z/VM, z/OS, i5/OS, S/390, OS/390, OS/400, AS/400, S/390 Parallel Enterprise Server, PowerVM, Power Architecture, POWER6+, POWER6, POWER5+, POWER5, POWER, OpenPower, PowerPC, BatchPipes, BladeCenter, System Storage, GPFS, HACMP, RETAIN, DB2 Connect, RACF, Redbooks, OS/2, Parallel Sysplex, MVS/ESA, AIX, Intelligent Miner, WebSphere, Netfinity, Tivoli and Informix are trademarks or registered trademarks of IBM Corporation.

Linux is the registered trademark of Linus Torvalds in the U.S. and other countries.

Adobe, the Adobe logo, Acrobat, PostScript, and Reader are either trademarks or registered trademarks of Adobe Systems Incorporated in the United States and/or other countries.

Oracle is a registered trademark of Oracle Corporation.

UNIX, X/Open, OSF/1, and Motif are registered trademarks of the Open Group.

Citrix, ICA, Program Neighborhood, MetaFrame, WinFrame, VideoFrame, and MultiWin are trademarks or registered trademarks of Citrix Systems, Inc.

HTML, XML, XHTML and W3C are trademarks or registered trademarks of W3C®, World Wide Web Consortium, Massachusetts Institute of Technology.

Java is a registered trademark of Sun Microsystems, Inc.

JavaScript is a registered trademark of Sun Microsystems, Inc., used under license for technology invented and implemented by Netscape.

SAP, R/3, SAP NetWeaver, Duet, PartnerEdge, ByDesign, SAP BusinessObjects Explorer, StreamWork, and other SAP products and services mentioned herein as well as their respective logos are trademarks or registered trademarks of SAP AG in Germany and other countries.

Business Objects and the Business Objects logo, BusinessObjects, Crystal Reports, Crystal Decisions, Web Intelligence, Xcelsius, and other Business Objects products and services mentioned herein as well as their respective logos are trademarks or registered trademarks of Business Objects Software Ltd. Business Objects is an SAP company.

Sybase and Adaptive Server, iAnywhere, Sybase 365, SQL Anywhere, and other Sybase products and services mentioned herein as well as their respective logos are trademarks or registered trademarks of Sybase, Inc. Sybase is an SAP company.

All other product and service names mentioned are the trademarks of their respective companies. Data contained in this document serves informational purposes only. National product specifications may vary.

The information in this document is proprietary to SAP. No part of this document may be reproduced, copied, or transmitted in any form or for any purpose without the express prior written permission of SAP AG.

This document is a preliminary version and not subject to your license agreement or any other agreement with SAP. This document contains only intended strategies, developments, and functionalities of the SAP® product and is not intended to be binding upon SAP to any particular course of business, product strategy, and/or development. Please note that this document is subject to change and may be changed by SAP at any time without notice.

SAP assumes no responsibility for errors or omissions in this document. SAP does not warrant the accuracy or completeness of the information, text, graphics, links, or other items contained within this material. This document is provided without a warranty of any kind, either express or implied, including but not limited to the implied warranties of merchantability, fitness for a particular purpose, or non-infringement. SAP shall have no liability for damages of any kind including without limitation direct, special, indirect, or consequential damages that may result from the use of these materials. This limitation shall not apply in cases of intent or gross negligence.

The statutory liability for personal injury and defective products is not affected. SAP has no control over the information that you may access through the use of hot links contained in these materials and does not endorse your use of third-party Web pages nor provide any warranty whatsoever relating to third-party Web pages.

SAP "How-to" Guides are intended to simplify the product implementation. While specific product features and procedures typically are explained in a practical business context, it is not implied that those features and procedures are the only approach in solving a specific business problem using SAP NetWeaver. Should you wish to receive additional information, clarification or support, please refer to SAP Consulting.

Any software coding and/or code lines / strings ("Code") included in this documentation are only examples and are not intended to be used in a productive system environment. The Code is only intended better explain and visualize the syntax and phrasing rules of certain coding. SAP does not warrant the correctness and completeness of the Code given herein, and SAP shall not be liable for errors or damages caused by the usage of the Code, except if such damages were caused by SAP intentionally or grossly negligent.

Disclaimer

Some components of this product are based on Java™. Any code change in these components may cause unpredictable and severe malfunctions and is therefore expressly prohibited, as is any decompilation of these components.

Any Java™ Source Code delivered with this product is only to be used by SAP's Support Services and may not be modified or altered in any way.

Document History

Document Version	Description
1.10	<< Enter your summary of changes in this version >>
1.00	First official release of this guide

Typographic Conventions

Type Style	Description
<i>Example Text</i>	Words or characters quoted from the screen. These include field names, screen titles, pushbuttons labels, menu names, menu paths, and menu options. Cross-references to other documentation
Example text	Emphasized words or phrases in body text, graphic titles, and table titles
Example text	File and directory names and their paths, messages, names of variables and parameters, source text, and names of installation, upgrade and database tools.
Example text	User entry texts. These are words or characters that you enter in the system exactly as they appear in the documentation.
<Example text>	Variable user entry. Angle brackets indicate that you replace these words and characters with appropriate entries to make entries in the system.
EXAMPLE TEXT	Keys on the keyboard, for example, F2 or ENTER.

Icons






Icon	Description
	Caution
	Note or Important
	Example
	Recommendation or Tip

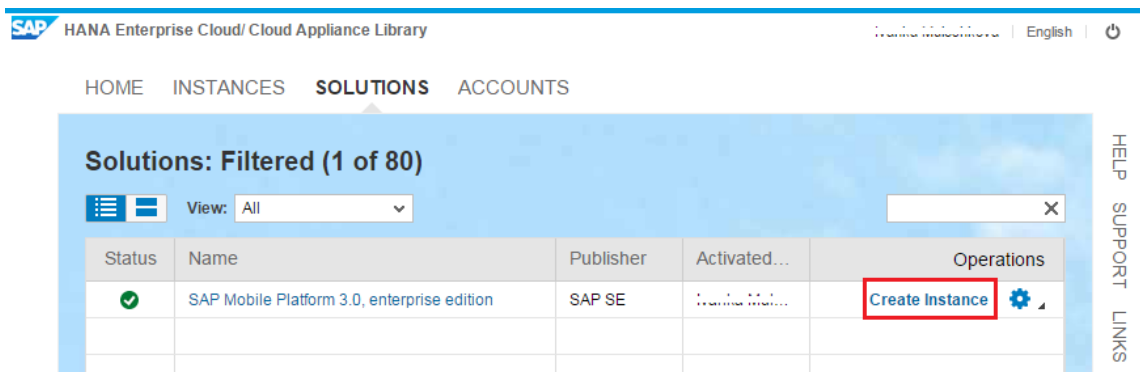
Table of Contents

1.	Step-by-Step Procedure	1
1.1	Start an Instance	1
1.2	Access the New Instance to Change Security Settings	3
1.3	Open SMP Management Cockpit	9

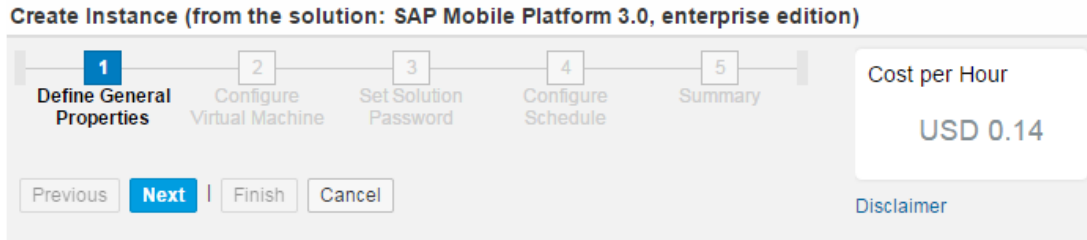
1. Step-by-Step Procedure

1.1 Start an Instance

- Go to the Cloud Appliance Library site <https://cal.sap.com/>
 Please visit [SAP Cloud Appliance Library Documentation](#) to understand how to create an account and how to start instances from a solution
- Select Solutions and look for "SAP Mobile Platform 3.0, enterprise edition" solution and click on Create Instance



- Enter the Name of the instance, select the general properties for the instance and click Next



Enter the general properties of the solution instance:

Name: *

Description:

Number of Instances: *

Account: *

Region: * [Information for additional regions](#)

Network: *

Subnet: *

Public Static IP Address

- Add HTTP 8080 and HTTPS 8083 port in the Access Points section and click Next

Create Instance (from the solution: SAP Mobile Platform 3.0, enterprise edition)

1 Define General Properties | **2 Configure Virtual Machine** | 3 Set Solution Password | 4 Configure Schedule | 5 Summary

Cost per Hour: USD 0.14

Previous | **Next** | Finish | Cancel

[Disclaimer](#)

Virtual Machine Sizes

Windows Server: *

Volume Type

Standard Provisioned IOPS

Access Points

Virtual Machine	Service	Port	IP Range
Windows Server	RDP	3389	0.0.0.0/0
Windows Server	HTTP	8080	0.0.0.0/0
Windows Server	HTTPS	8083	0.0.0.0/0

- Set Windows Password and click Next

Create Instance (from the solution: SAP Mobile Platform 3.0, enterprise edition)

1 Define General Properties | 2 Configure Virtual Machine | **3 Set Solution Password** | 4 Configure Schedule | 5 Summary

Cost per Hour: USD 0.14

Previous | **Next** | Finish | Cancel

[Disclaimer](#)

Set the master password for the solution from which you want to create an instance. Using the master password, you can conn

Password Requirements

- The password must contain at least one lowercase letter
- The password must contain at least one uppercase letter
- The password must be exactly eight or nine characters long
- The password must contain at least one digit
- The valid characters are: A-Z, a-z, 0-9, \$, #, _
- The first character has to be one of the following: A-Z, a-z, \$, #
- The first three characters cannot be one and the same

Virtual Machine(s): **Windows Server**

Password: *

Retype Password: *

- Optionally, you can configure the scheduling. Click Next

Create Instance (from the solution: SAP Mobile Platform 3.0, enterprise edition)

Cost per Hour
USD 0.14

Disclaimer

Define the schedule of the solution instance, when to suspend it, or when to terminate it:

Scheduling Options:

Suspend Date: : (HH:MM)

Set the termination date of the solution instance

Time Zone: *

7. Check the information in the Summary tab and click Finish

⚠ After the instance is created, the SAP Mobile Platform 3.0, enterprise edition installation will start. Wait around 40 min before accessing the instance

Create Instance (from the solution: SAP Mobile Platform 3.0, enterprise edition)

Cost per Hour
USD 0.14

Disclaimer

Verify the details of the solution instance:

General Properties

Name: **Test Instance**
 Description:
 Number of Instances: **1**
 Account: ******* (Amazon Web Services)**
 Region: **us-east-1**
 Network: **SAP CAL Default Network**
 Subnet: **VPC subnet in us-east-1a | 10.0.0.0/20**
 Public Static IP Address: **No**

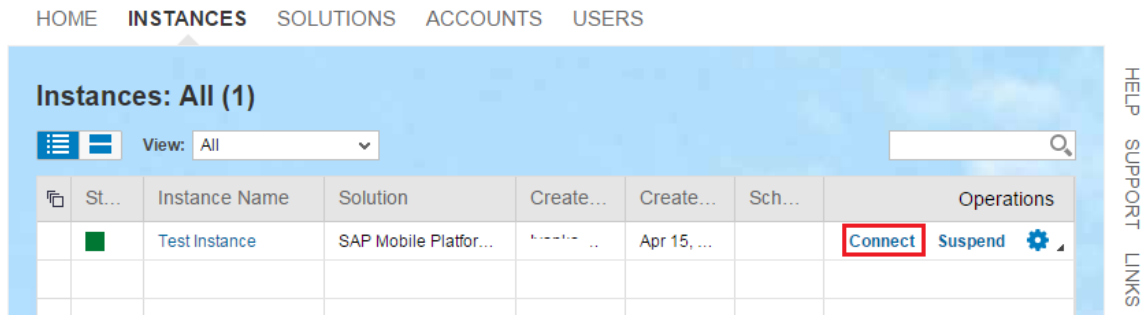
Virtual Machine(s)

Volume Type: **Standard**
 Windows Server: **General Purpose Medium (m3.medium)**

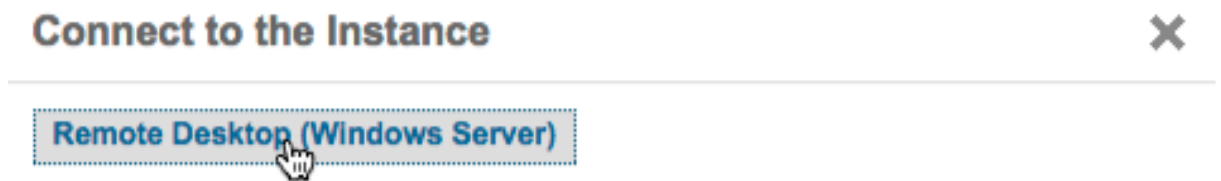
1.2 Access the New Instance to Change Security Settings

1. Go to <https://cal.sap.com/> and look for the instance you just created

- 2. Click on Connect




- 3. Click on Remote Desktop (Windows Server)

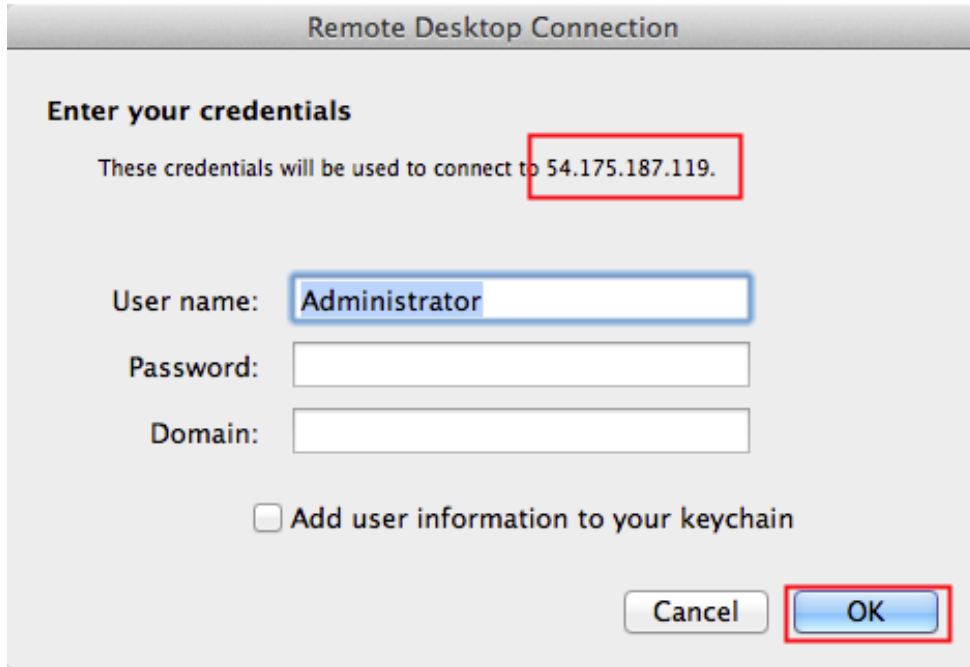


- 4. An rdp file will download. Click on it to open the Remote Desktop Connection

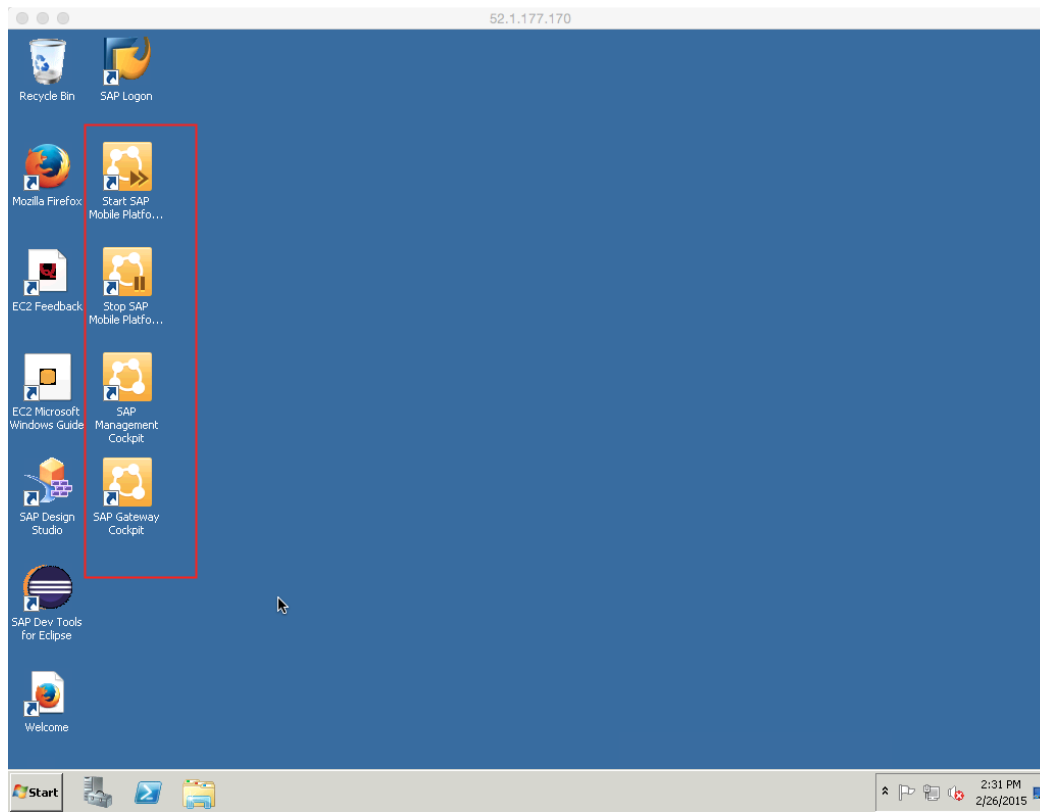


5. In the Remote Desktop Connection windows, enter the password you created during the creation of the instance and Click OK.

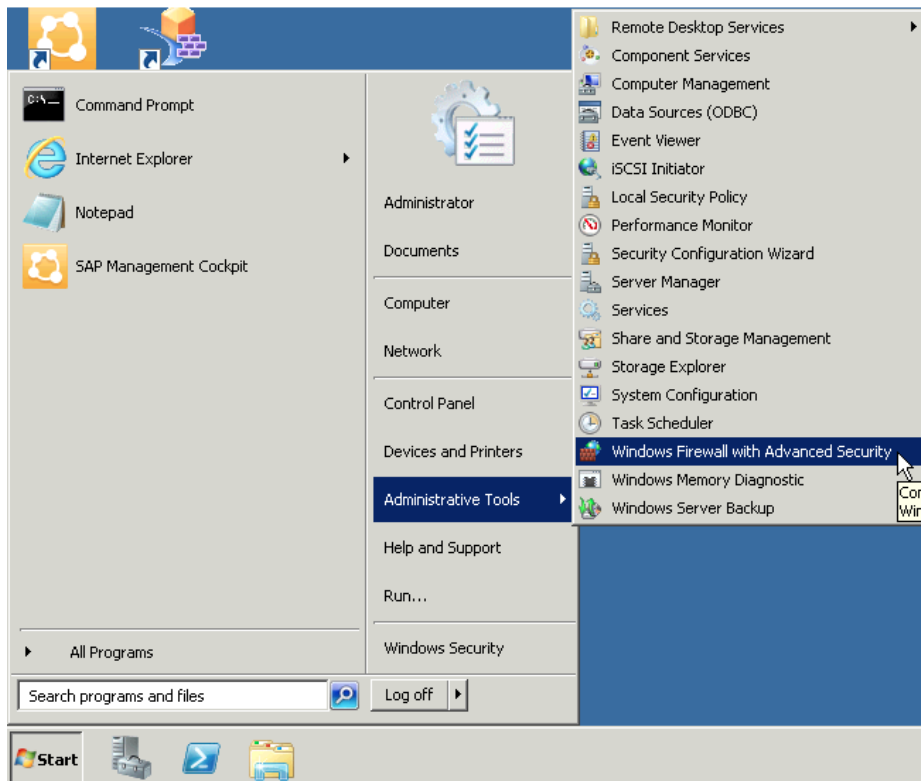
 Take note of the IP address. You will needed later to open the SMP Management Cockpit



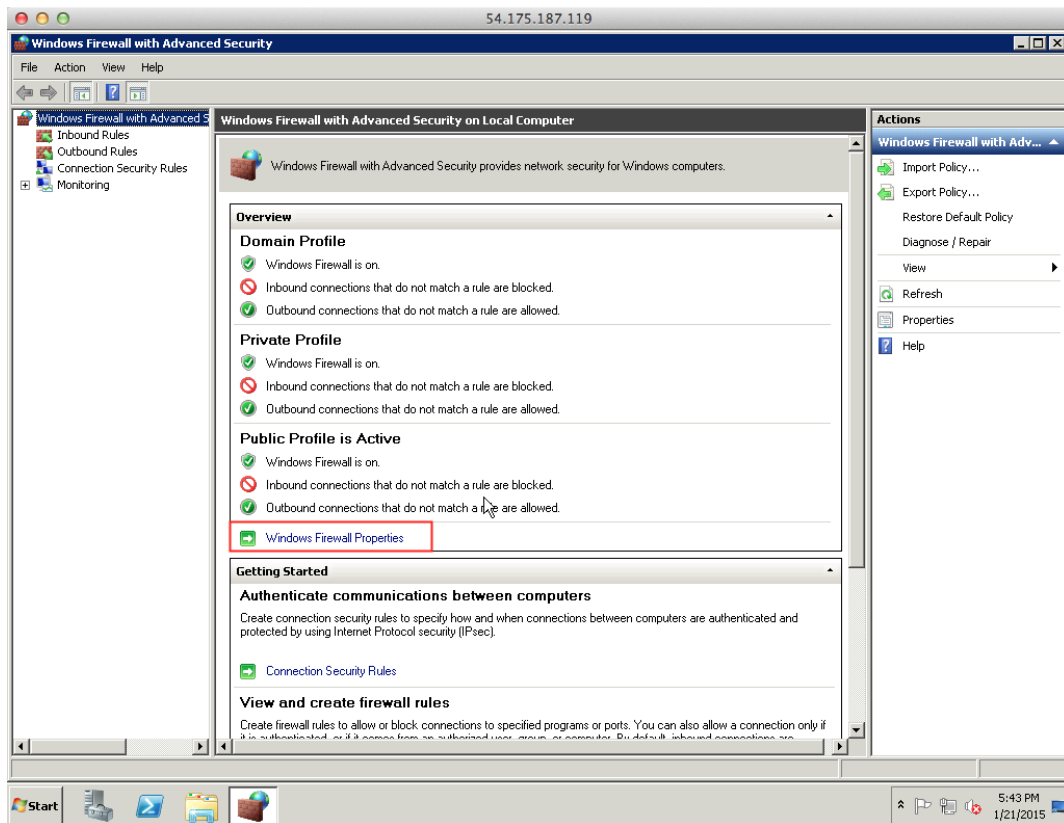
6. You can confirm the instance is ready to go if you see the SMP shortcuts in the desktop. If they don't appear, remember that after you created the instance, the SMP 3.0 Server installation will start. Wait around 40 min before accessing the instance



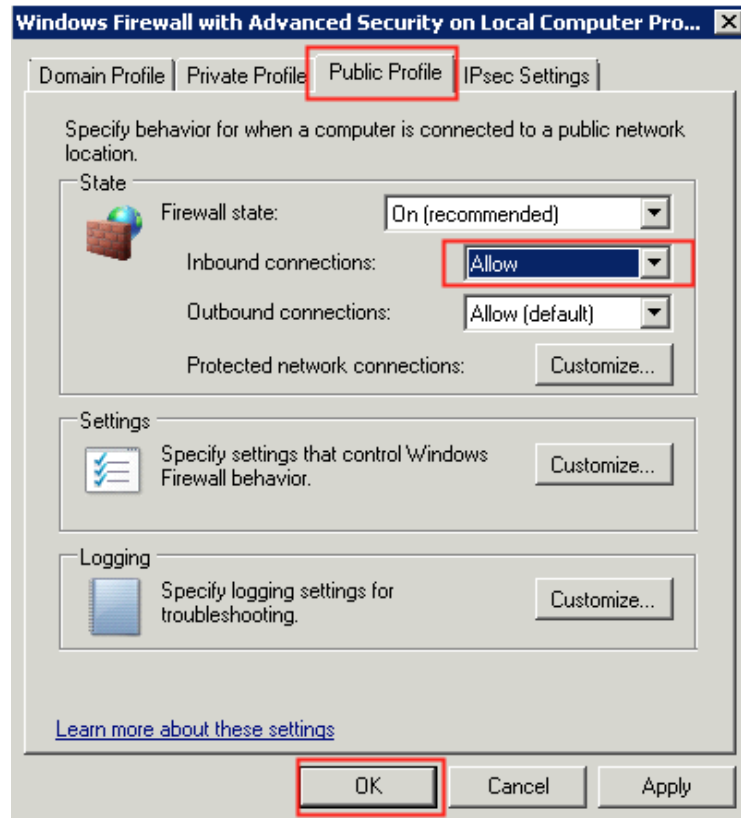
7. Go to Administrative Tools and open Windows Firewall with Advanced Security



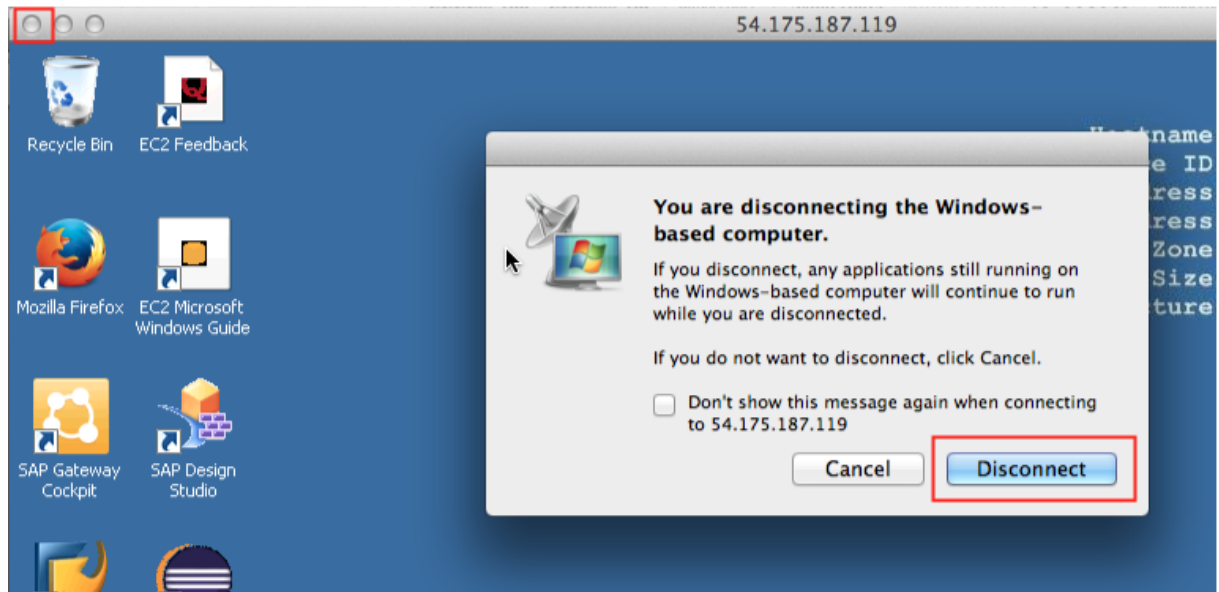
8. Open Windows Firewall Properties



9. Select Public Profile and in the Inbound connections select Allow. Click on OK

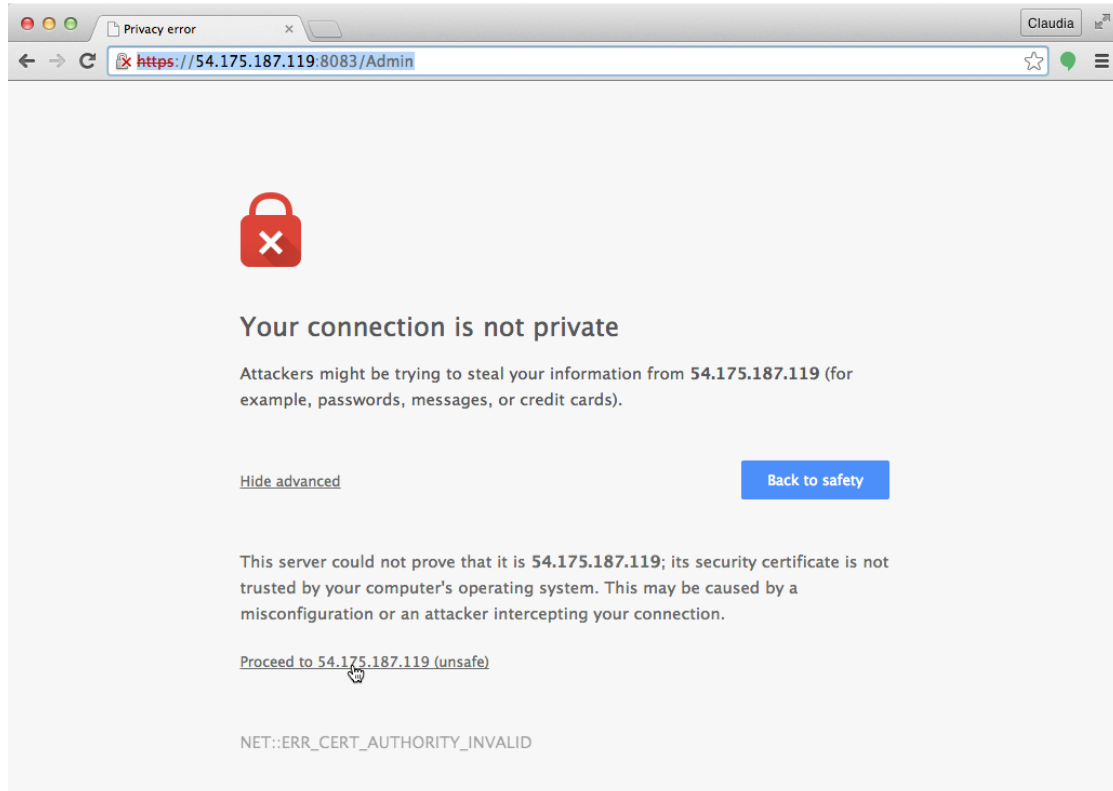


10. You can close the Windows Firewall and disconnect from the RDP and disconnect from the Remote Desktop Connection

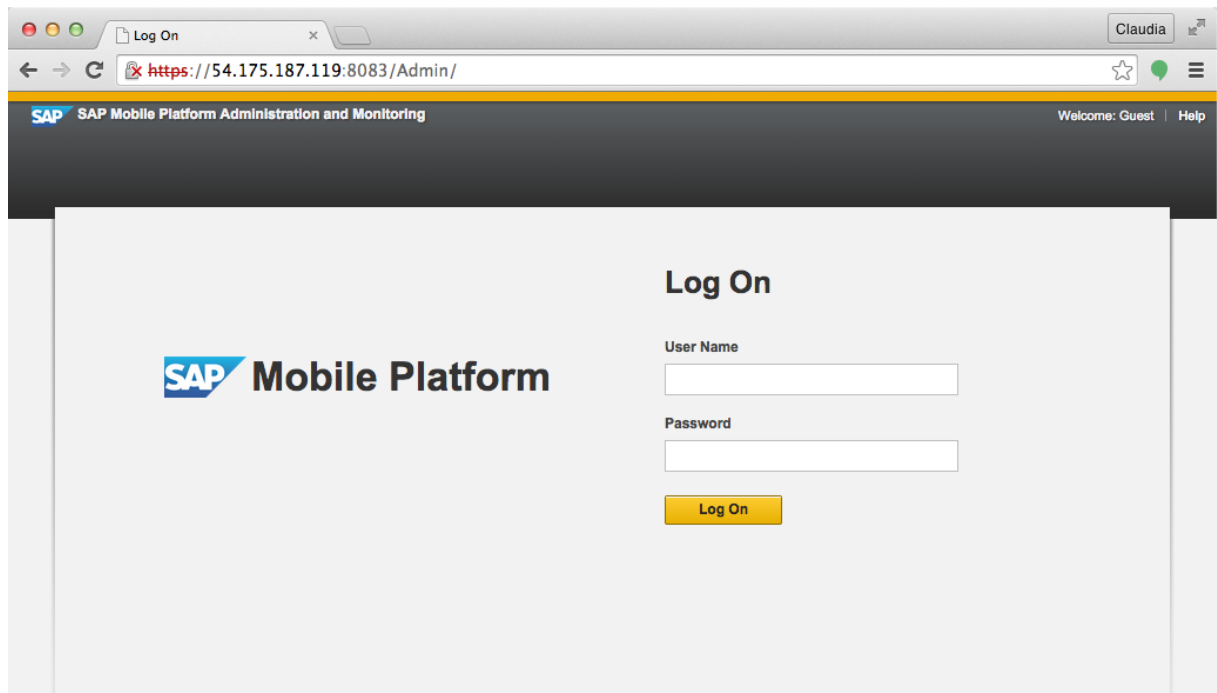


1.3 Open SMP Management Cockpit


1. From your computer, open chrome and go to the following URL `https://<SMP IP address>:8083/Admin`
2. You will receive some warnings, click on Proceed

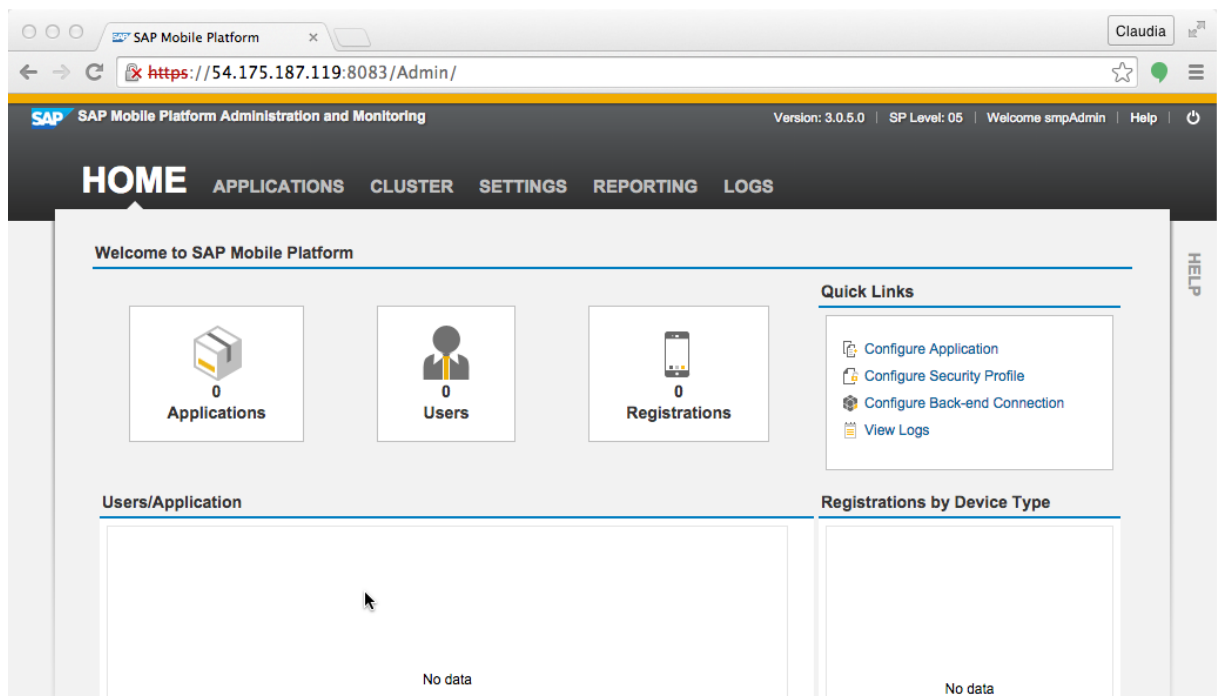


3. SMP Management Cockpit will open. Enter `smpAdmin/s3pAdmin` and click on Log On



4. The main page will be displayed. The instance is ready!

 In the Home screen on the top right corner you can check the SMP 3.0 Server version. In the screenshot below is SMP 3.0 SP05

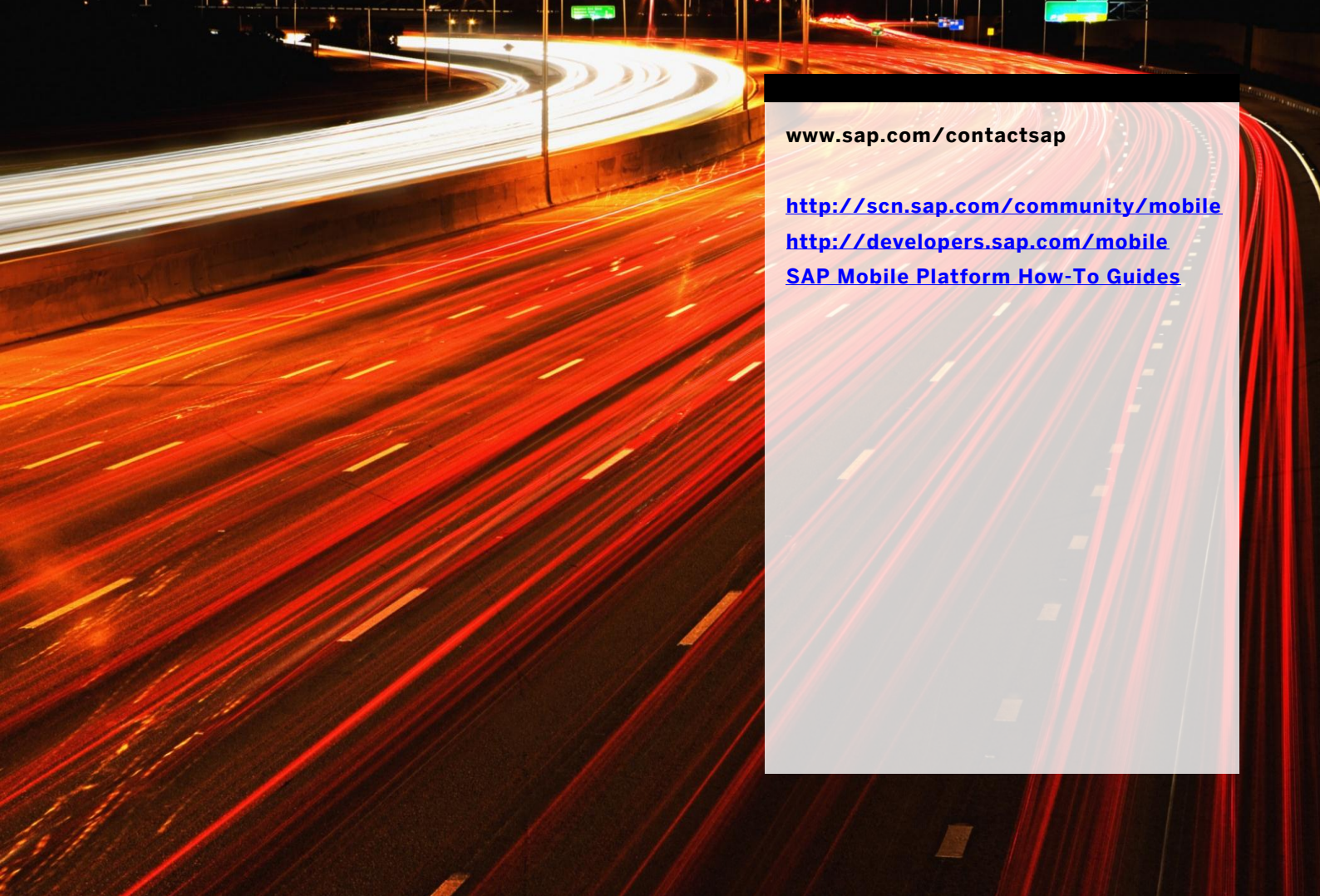


You can find a variety of information related to SMP 3.0 and the administration of the SAP Mobile Platform from the links below

- SAP Mobile Platform Server 3.0: The official documentation <http://help.sap.com/mobile-platform>

- Admin & Architect webinars in <http://scn.sap.com/docs/DOC-49862>

The SAP Mobile Platform SDK 3.0 is now available as a separate download from Service Market Place. It provides you with tools that streamline the development, delivery, security and management of mobile applications. Here you will information to get started with SAP Mobile Platform SDK: <http://scn.sap.com/docs/DOC-49863>



www.sap.com/contactsap

<http://scn.sap.com/community/mobile>

<http://developers.sap.com/mobile>

[SAP Mobile Platform How-To Guides](#)



The Best-Run Businesses Run SAP™