

Document Version: 1.0 – 2017-12-01

Getting Started with SAP S/4HANA 1709 Fully-Activated Appliance



Table of Contents

1	Solution Information.....	3
1.1	Introduction.....	3
1.2	Installed Products.....	3
1.3	Business Scenarios.....	4
1.4	More Information & Support.....	6
1.4.1	More Information.....	6
1.4.2	Support.....	7
2	Accessing the Solution.....	8
2.1	Overview.....	8
2.2	Option 1: System access via embedded Windows Remote Desktop frontend server.....	8
2.3	Option 2: System access via local PC.....	10
2.3.1	Mapping your local <i>hosts</i> file.....	10
2.3.2	Configure ";*.dummy.nodomain" for Web Browser.....	10
2.4	Users & passwords for the system components.....	11
2.4.1	SAP S/4HANA ABAP application server.....	11
2.4.2	SAP HANA DB server.....	12
2.4.3	Java Application Server.....	13
2.4.4	SAP BusinessObjects BI platform.....	14
2.4.5	Windows Frontend Server Details.....	14
2.4.6	Backend operating system.....	15
3	Licenses.....	16
4	General Security Aspects in SAP CAL.....	17
5	Solution Provisioning in SAP Cloud Appliance Library.....	19
6	Appendix.....	20
6.1	Installed Technical Component Details.....	20
6.1.1	SAP NetWeaver 7.52 application server ABAP incl. SAP S/4HANA 1709.....	20
6.1.2	SAP NetWeaver 7.50 application server JAVA with Adobe Document Services installed.....	25
6.1.3	Windows Remote Desktop.....	25
6.1.4	SAP BusinessObjects BI Platform 4.2.....	25

1 Solution Information

1.1 Introduction

This guide provides information about the “SAP S/4HANA 1709 (SPO0) - Fully Activated Appliance” on SAP Cloud Appliance Library (SAP CAL).

The appliance contains an SAP S/4HANA 1709 system with pre-configured SAP Best Practices and demo scenarios. Typical use cases are trial system, sandboxing, proof-of-concept, or scoping exercises.

It can be rapidly brought up as your personal instance with administrative rights either hosted in dedicated cloud providers such as Amazon, MS Azure or Google (in ~2 hours) or on-premise on your own hardware (in ~2 days).

A general introduction into the appliance and the usage as trial or sandbox system for SAP S/4HANA 1709 can be found on <https://blogs.sap.com/?p=564532>.

Known issues will be continuously updated in this blog: <https://blogs.sap.com/?p=575308>.

Video tutorials how to create an AWS account and how to launch the appliance can be found [here](#) (they might not necessarily show the creation of the SAP S/4HANA 1709 appliance but the concepts are very similar).

1.2 Installed Products

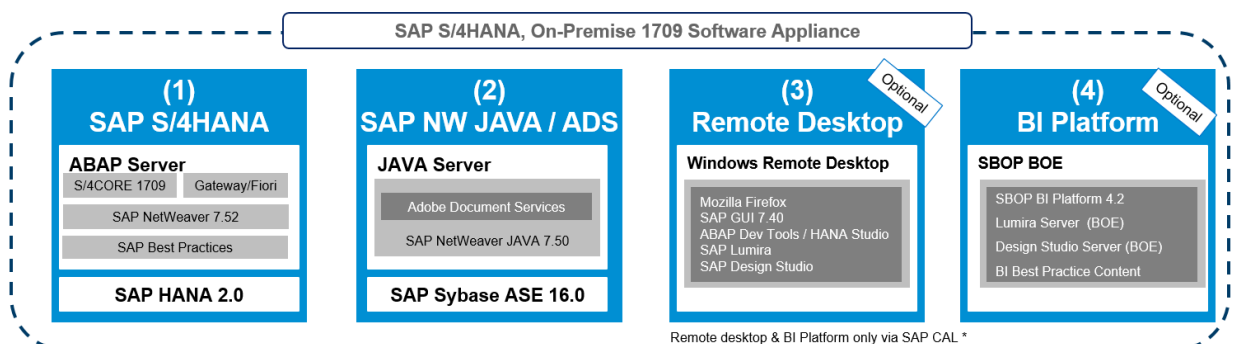
You get access to a system (landscape) that has been built using the following components:

1. SAP NetWeaver 7.52 application server ABAP incl. SAP S/4HANA 1709 (SPO0)
2. SAP NetWeaver 7.50 application server JAVA with installed Adobe Document Services.
3. Microsoft Windows Server 2012 (as remote desktop) for easy frontend access.
4. SAP BusinessObjects BI Platform 4.2 SP4 (with pre-defined BI assets for analysis of SAP S/4HANA data)

SAP S/4HANA 1709 Fully-Activated Appliance

Technical components

Technical Components of the Appliance



* Notes:

- The BI Platform and the remote desktop are optional in CAL. Both are included by default in the landscape but you can opt-out in the Advanced Mode of the instance creation in the SAP CAL console. Opting out will decrease your hosting fees, but this cannot be undone unless you create a new instance that has these components included again.
- The BI Platform and the remote desktop are only available when using SAP CAL as described in this document. However, you can also receive the appliance for installation on your own on-premise hardware but in that case BI platform and remote desktop are not included. Please see SAP Notes [2202234](#) (customers) or [2041140](#) (partners),

1.3 Business Scenarios

The SAP S/4HANA 1709 Fully Activated Appliance uses SAP Best Practices as main business content (see chart below for the business areas you can expect in it):

SAP Best Practices for SAP S/4HANA 1709

Details: https://rapid.sap.com/bp/#/BP_OP_ENTPR

Streamlined Procure to Pay	Accelerated Plan to Product	Optimized Order to Cash	HR Connectivity	Core Finance	Database and Data Management	Application Platform and Infrastructure
Collaborative Sourcing and Contract Management	Project Control and Product Development	Order and Contract Management	Time Recording	Accounting and Closing Operations	Enterprise Information Management	Process Management and Integration
Supplier Management	Product Engineering	Inventory and Basic Warehouse Management		Cost Management and Profitability Analysis		Content and Collaboration
Operational Purchasing	Production Planning	Receivables Processing		Treasury Management *		
Inventory and Basic Warehouse Management	Production Operations			Receivables Management *		
Invoice and Payables Management	Quality Management					
Procurement Analytics	Inventory and Basic Warehouse Management					
	Maintenance Management					

* LoB Finance

The SAP Best Practices configuration content is available for 25 countries, the suggested demo walkthroughs (incl. demo data) in the appliance are configured for USA only, though:

Australia, Belgium, Canada, China, France, Germany, Great Britain, Hong Kong, Hungary, Ireland, Italy, Japan, Luxembourg, Malaysia, Netherlands, New Zealand, Philippines, Singapore, South Africa, Spain, Sweden, Switzerland, Taiwan, United Arab Emirates, USA

Multiple ABAP clients are configured in the appliance.

Client 100 is the primary demo client that contains the pre-configured scenarios.

Client	Business Content	Sample users (all with password <i>Welcome1</i>)
000 Standard delivery client	<ul style="list-style-type: none"> None (standard customizing only) 	BPINST
100 Trial & Exploration client	<ul style="list-style-type: none"> Pre-activated SAP Best Practices for SAP S/4HANA 1709 (Germany & US, sample demo flow localized for US) * Customizing and transactional data in US company code (CC 1710) SAP Fiori Apps Based on the <u>merged-client</u> approach BW configuration for Integrated Business Planning (IBP) <p><u>Note on the users:</u></p> <p>The users <i>S4H_<area>_DEM</i> (e.g. S4H_FIN_DEM) have a restricted set of roles and Fiori apps assigned for the respective area, and should be primarily used for the suggested demo walkthroughs that can be found on the landing page for the SAP S/4HANA trial.</p> <p>The users <i>S4H_<area></i> (e.g. S4H_FIN) have the complete set of roles and Fiori apps for the respective area assigned (based on our assessment in the context of the appliance). These users will have significantly longer loading times in the Fiori launchpad, and should be used primarily to get an overview of interesting roles/apps, and to serve as template for your own user creation in transaction SU01.</p>	<p>S4H_AA_DEM / S4H_AA (Asset Accounting)</p> <p>S4H_FIN_DEM / S4H_FIN (Finance)</p> <p>S4H_CASH_DEM / S4H_CASH (Cash Management)</p> <p>S4H_CO_DEM / S4H_CO (Controlling)</p> <p>S4H_MM_DEM / S4H_MM (Materials Management)</p> <p>S4H_PP_DEM / S4H_PP (Production Planning)</p> <p>S4H_SD_DEM / S4H_SD (Sales & Distribution)</p> <p>S4H_EXT (Extensibility)</p> <p>S4H_EWM (Warehouse Management)</p> <p>S4H_MG (Data Migration)</p> <p>BPINST (Generic user. Caution: long loading times in Fiori Launchpad)</p>
200 Ready-to-Activate client (white list)	<ul style="list-style-type: none"> Ready-to-Activate client with all pre-activation preparation activities executed 	BPINST

Client	Business Content	Sample users (all with password <i>Welcome1</i>)
300 SAP Best Practices reference client (white list)	<ul style="list-style-type: none"> • Pre-activated SAP Best Practices for SAP S/4HANA 1709 US/DE • Based on the <u>white-list</u> approach 	BPINST
400 SAP Best Practices reference client (merged-000-client)	<ul style="list-style-type: none"> • Pre-activated SAP Best Practices for SAP S/4HANA 1709 (all 25 localizations) without transactional data • Based on the <u>merged-client</u> approach 	BPINST

Please see chapter 2 for logon procedures and further administrative users/passwords.

For more information about SAP Best Practices for SAP S/4HANA 1709, please visit https://rapid.sap.com/bp/#/BP_OP_ENTPR

For information on the 'white-list' and 'merged-client' approach, please see [here](#)

For the Administrator Guide of SAP Best Practices for SAP S/4HANA 1709, please visit:

http://help.sap.com/s4hana_op_1709 → Additional Information → Administration Guide for Implementation

* Please notice the following:

(1) For the US localization, SAP Best Practices are delivered with internal tax calculation. This includes sample jurisdiction codes and sample rates so that you can execute the best practices test scripts. productive purposes, you must replace the sample jurisdiction codes and rates with your own user defined jurisdiction codes and actual tax rates. If you prefer to use an external tax provider, you must configure the required settings.

(2) The organizational structure and chart of accounts are activated in client 100 and client 300/500 as SAP Best Practices content provided. Client 200 & 400 don't contain these settings.

1.4 More Information & Support

1.4.1 More Information

Overview blog in SAP Community:
<https://blogs.sap.com/?p=564532>

Known issues blog in SAP Community:
<https://blogs.sap.com/?p=575308>

SAP S/4HANA Trial Landing Page (containing demo walkthroughs and a Quick Start Guide into SAP CAL)
<https://www.sap.com/cmp/oth/crm-s4hana/s4hana-on-premise.html>

YouTube playlist (how to create Cloud Provider accounts and start an SAP S/4HANA appliance instance...)

- <https://www.youtube.com/playlist?list=PLWV533hWWvDmww3OX9YPhjjS1I1n6o-H2>

1.4.2 Support

If you run a 30-day trial (i.e. no SAP CAL subscription license), please use the SAP Community.

If you have an SAP CAL subscription license acquired, you can also [report an incident](#).

SAP Community (preferably take SAP CAL as it's very closely monitored):

- SAP CAL: <https://answers.sap.com/questions/metadata/24005/sap-cloud-appliance-library.html>
- SAP S/4HANA: <https://answers.sap.com/questions/metadata/22943/sap-s4hana.html>

Incident components (if you have licensed the SAP CAL subscription package)

- BC-VCM-CAL

2 Accessing the Solution

2.1 Overview

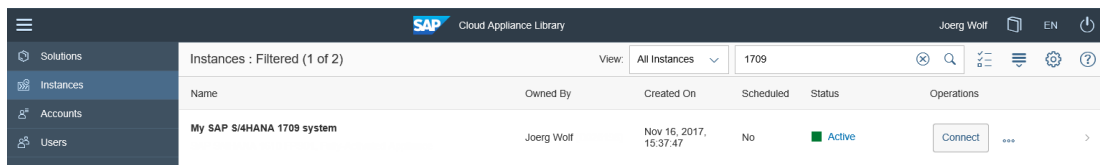
The appliance can be accessed via a preconfigured Windows remote desktop (option 1) or via client tools on your local PC (option 2).

For first steps with the appliance, we recommend access via the remote desktop since you only need to have the Windows remote desktop client installed on your PC which in most cases will be the case,

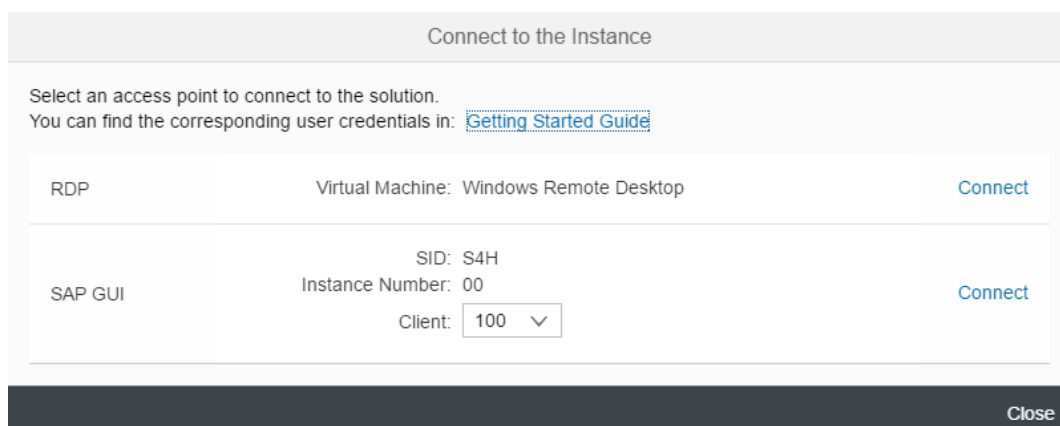
Since UI performance and flexibility are usually better via access from your local PC, please evaluate if you can use this method as standard access. It requires administrator access on your PC and 5 minutes of effort.

2.2 Option 1: System access via embedded Windows Remote Desktop frontend server

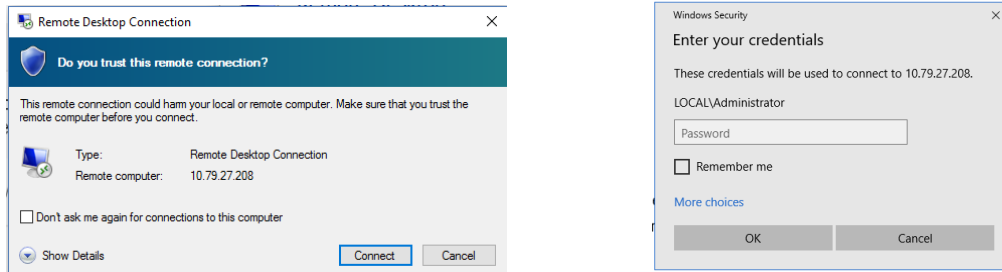
1. After your own solution instance is created, click the [Connect](#) button in the Instances view of the console.



2. In the pop-up, click [Connect](#) in the RDP Virtual Machine: Windows Remote Desktop line.

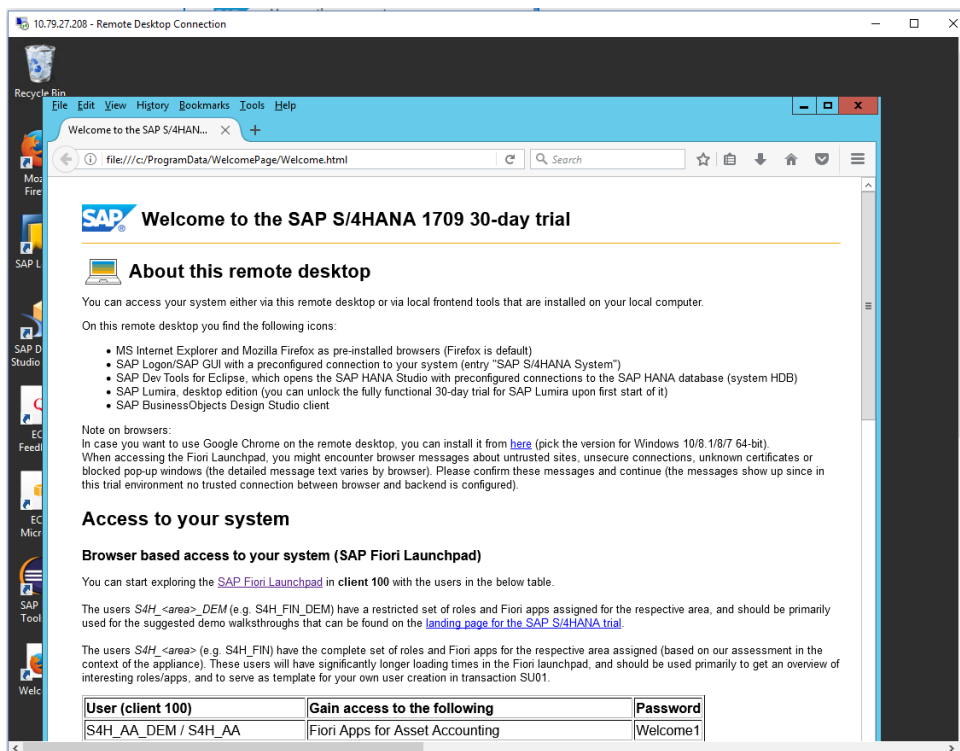


- Confirm the pop-up window to allow Remote Desktop Connection (click on “Connect”). Enter user *Administrator* (local domain of the remote desktop) and your <Master Password> that you specified during the instance creation in the SAP CAL console.



- Next you will see the pre-configured Windows Frontend Server. Follow the information on the Welcome page to logon to the SAP S/4HANA system, and to run sample scenarios. More details on system connectivity can be found in section 3.3.

Note: The embedded Windows Remoted Desktop license allows 2 concurrent sessions (one for user Administrator and one for another user that you first would have to create on the remote desktop).



2.3 Option 2: System access via local PC

2.3.1 Mapping your local *hosts* file

To log on to the Fiori Launchpad from your local PC, you need to ensure that you have mapped the IP addresses of your instance against clear text host names. This mapping step is needed since the connection to the cloud providers uses IP addresses, whereas the S/4HANA system needs dedicated host names to work correctly.

After you have done the mapping (by editing a local file on your computer), you will be able to access the Fiori Launchpad of SAP S/4HANA via this URL:

https://vhcals4hci.dummy.nodomain:44301/sap/bc/ui5_ui5/ui2/ushell/shells/abap/FioriLaunchpad.html

If you cannot map your local hosts file (e.g. you don't have administrator rights on your computer), you can use the IP address of your instance in the URL (https://<IP_Address>:44301/...), however, not all applications and scenarios will work correctly with it. Another option could be to use browser plugins (e.g. Chrome Virtual Host) that simulate the mapping in the browser session only (again, not all scenarios might work correctly with it).

1. Open *Notepad* as administrator (search for *Notepad* on your computer, right mouse click, 'Run as administrator');
2. Click *File* → *Open* and enter the following path:
 - For Windows operating system: `c:\windows\system32\drivers\etc\hosts`
 - For Linux operating system: `/etc/hosts`
3. Ensure to select *All Files (*.*)*
4. Open the *hosts* file and add the following lines to it (the IP addresses for the servers are displayed in the CAL console in the instance properties, take the external IP address):

```
# S4H Appliance
<External IP Address SAP S4HANA/HDB server> vhcals4hci.dummy.nodomain vhcals4hci
vhcals4hcs.dummy.nodomain vhcals4hcs vhcaldhdbdb vhcaldhdbdb.dummy.nodomain
<IP Address SAP NW JAVA/ASE/ADS server> vhcals4eci.dummy.nodomain vhcals4eci
vhcals4ecs.dummy.nodomain vhcals4ecs vhcals4edb vhcals4edb.dummy.nodomain
<IP Address SAP BI Platform > bihost bihost.dummy.nodomain
```

5. Save the *hosts* file and exit.

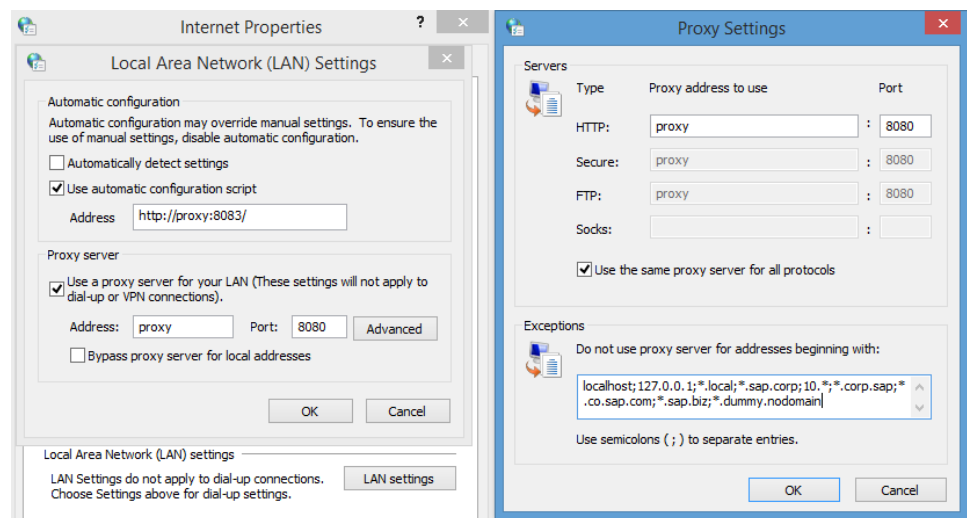
2.3.2 Configure ";*.dummy.nodomain" for Web Browser

Working with the <dummy.nodomain> might require changes in your web browser, in case there is a web proxy defined (if you are unsure or detect connectivity issues, please contact your network administrator):

1. If you are using Google Chrome as web browser, follow these steps:
 1. Logon to *Chrome* → *Settings* → *Show Advanced Settings* → *Network* → *Change proxy settings* → *LAN Settings* → *Proxy Server* → *Advanced*
 2. In the *Exceptions*, add **”;*.dummy.nodomain** directly at the end of the existing entry.

3. Click OK.
2. If you are using Internet Explorer as web browser, follow these steps:
 1. Logon to *Internet Explorer* → *Internet Options* → *Connections* → *LAN Settings* → *Proxy Server* → *Advanced*
 2. In the *Exceptions*, add **;*.*dummy.nodomain** direct at the end of the existing entry.
 3. Click OK.

See an example in the screenshot below:



2.4 Users & passwords for the system components

2.4.1 SAP S/4HANA ABAP application server

Connect to SAP S4H using the information in the table below.

Name	Value	Description
SID	S4H	System ID of the SAP system
Instance Number	00	The instance number of the central instance (CI)
Password for users DDIC & SAP*	<Master Password>	The initial master password of the system you provided in the SAP Cloud Appliance Library when creating the instance.
Clients	000,100,200,300,400	These are the pre-configured clients, see section "Business Scenarios" for details

Name	Value	Description
ABAP administrator name	s4hadm	Additional user for ABAP lifecycle management – start/stop, administration,
ABAP administrator password	<Master Password>	The initial master password of the system you provided in the SAP Cloud Appliance Library when creating the instance.
SAP Web Dispatcher administrator name (default)	bpinst	
SAP Web Dispatcher administrator password (default)	Welcome1	
Technical user for HANA DB connectivity (schema user)	saphanadb	
Technical user for HANA DB connectivity (password)	<Master Password>	

2.4.2 SAP HANA DB server

Tenant database

Name	Value	Description
HANA DB system	HDB	System ID of the HANA DB
HANA DB Instance Number	02	Instance number of HANA DB
HANA SYSTEM user name	SYSTEM	Standard HANA system user
HANA SYSTEM user password	<Master Password>	The initial master password of the system you provided in the SAP Cloud Appliance Library when creating the instance.
HANA administrator name	HDBADM	Additional user for HANA lifecycle management – start/stop, administration functions, recovery.

Name	Value	Description
HANA administrator password	<Master Password>	The initial master password of the system you provided in the SAP Cloud Appliance Library when creating the instance.
Generic HANA DB user	BPINST	Generic user that can be used to access HANA DB (standard password Welcome1)

System database

Name	Value	Description
HANA DB system	SYSTEMDB	System ID of the HANA DB
HANA DB Instance Number	02	Instance number of HANA DB
HANA SYSTEM user name	SYSTEM	Standard HANA system user
HANA SYSTEM user password	<Master Password>	The initial master password of the system you provided in the SAP Cloud Appliance Library when creating the instance.
HANA administrator name	HDBADM	Additional user for HANA lifecycle management – start/stop, administration functions, recovery.
HANA administrator password	<Master Password>	The initial master password of the system you provided in the SAP Cloud Appliance Library when creating the instance.
Generic HANA DB user	BPINST	Generic user that can be used to access HANA DB (standard password Welcome1)

2.4.3 Java Application Server

The administration users for ASE and JAVA on operating system level are defined as follows:

Name	Value	Description
ASE administrator name	sybadm	Additional user for ASE lifecycle management – start/stop, administration.
ASE administrator password	<Master Password>	The password is the same as the master password provided during instance creation in the SAP Cloud Appliance Library.

Name	Value	Description
JAVA administrator name	Administrator	Additional user for JAVA lifecycle management – start/stop, administration, functions, recovery.
JAVA administrator password	<Master Password>	The password is the same as the master password provided during instance creation in the SAP Cloud Appliance Library.
Additional JAVA user	BPINST	Password Welcome1

Connect to the JAVA server (SAP NetWeaver Administrator) via this URL: <https://<server>:50001/nwa>.

If you have configured your local hosts file (see chapter 2.3) or use the remote desktop, you can use this URL: <https://vhcalj2eci.dummy.nodomain:50001/nwa>

2.4.4 SAP BusinessObjects BI platform

The administration users for SAP BusinessObjects BI Platform are defined as follows:

Parameter ID	Parameter Value	Note
Administrator name	Administrator	Use for all administrative functions of the BI platform
Administrator password	Welcome1	
BI Power User	BPINST	
BI Power User password	Welcome1	

In the logon screen (<http://bihost:8080/BOE/BI>), use *bihost:6400* as system and Enterprise authentication. Usage of the *bihost* alias requires local host file mapping when using local PC access (see section 2.3). The Windows remote desktop has the mapping pre-configured.

2.4.5 Windows Frontend Server Details

Connect to the Frontend server using the information in the table below. You can also configure new users manually on your Remote Desktop client.

For more information, how to connect to the Frontend Server, see [Connecting to a Solution Instance](#).

Name	Value	Description
IP Address	<IP Address>	The IP address of your frontend server instance you created in SAP CAL (use the “external” IP address)
User	Administrator	User for the Windows frontend server. This is a local user on the remote desktop (if your laptop has a corporate

Name	Value	Description
		domain configured, please connect as local user). Only one Administrator user can logon at the front-end server at the same point in time.
Password	<Master Password>	The initial master password of the system you provided in the SAP Cloud Appliance Library when creating the instance.

A note on browsers:

Google Chrome is not pre-installed on this Remote Desktop. If you want to use it, either use a local installation of it or install it on the remote desktop from [here](#) (pick the version for Windows 10/8.1/8/7 64-bit).

In the Fiori launchpad, you might find slightly different rendering behaviors depending on the browser version. If you encounter rendering problems, please search for SAP Notes how to potentially fix them.

If you want to access the Fiori Launchpad with a local browser, please be sure to map your local host file as described in section 2.3 of this document or on <https://www.sap.com/cmp/oth/crm-s4hana/s4hana-on-premise.html> > Quick Start Guide.

For all browsers, you need to once add the Fiori launchpad to the trusted sites since the certificates in this trial are not signed/trusted. If you see messages about unsafe connections, untrusted certificates, etc., please always click on "Proceed" or "I know the risk", etc. (the screens and needed clicks will vary depending on the browser).

2.4.6 Backend operating system

Parameter ID	Parameter Value	Note
OS User Name	root	The default Linux administrator user
OS Password	<none>	Use the generated private key with SSH tools

2.4.6.1 Accessing Your Instance on OS Level

For information how to access a solution on OS level, go to [this FAQ wiki page](#) and check this question: How to connect to a running instance via the secure shell protocol (SSH)?

Note:

You must use the private key generated in the last step of the Create Instance wizard from SAP Cloud Appliance Library. You can either store the key file attached to your instance within SAP CAL, or download it to a local secure file share on your computer.

3 Licenses

3.1 Running the appliance as a trial for a free period

This solution can be used with a Free Trial License Agreement for the configured free period. You will be asked to agree to the Free Trial License Agreement during the instantiation steps.

Once you create the solution instance, the SAP system will generate a temporary license key that is sufficient for exploration purpose. After the expiration of the pre-installed temporary license a valid license is required to keep using the solution instance.

Note that you are not allowed to install license keys under the Free Trial License Agreement. You can continue the solution with the Product License Agreement any time prior to the end of the free period by unlocking it.

3.2 Running the appliance with a product license key

To use the instance created from this solution under your own SAP Product License Agreements, you must unlock the solution in SAP Cloud Appliance Library. As a prerequisite, you must own the required SAP Product licenses and need to purchase the SAP Cloud Appliance Library subscription package. For more information, see [Unlocking Solutions](#).

3.3 License key installation

After unlocking the solution, you need to apply a valid license key to it (via <https://support.sap.com/licensekey>) with the below parameters.

For more information about how to request and install product license keys, see [this blog](#).

SID	Product	Version	DB	OS	Comment
<i>HDB</i>	<i>SAP HANA, platform edition</i>	<i>SAP HANA 2.0, platform edition</i>	<i>n/a</i>	<i>Linux</i>	<i>License type: SAP In-memory Appliance platform Quantity: 256 GB Memory Volume</i>
<i>S4H</i>	<i>SAP S/4HANA</i>	<i>SAP S/4HANA 1709</i>	<i>SAP HANA database</i>	<i>Linux</i>	<i>N/A</i>
<i>J2E</i>	<i>SAP NetWeaver</i>	<i>SAP NetWeaver 7.5</i>	<i>Sybase ASE</i>	<i>Linux</i>	<i>As license type, select 'J2EE - Web AS JAVA'</i>

4 General Security Aspects in SAP CAL

By default, some ports are opened for the security group formed by the server components of your solution instance. The access from your local computer to your system instance happens via those ports (see 'Description' what port is used where).

The list below describes the ports opened for the security group formed by the server components of your solution instance.

You can edit/add/remove ports manually in the instance details (click on the instance link in the CAL console → Edit → Virtual Machine → Access Points).

Virtual Machine*	Protocol	Port (open by default)	Description
ABAP	SSH	22	Used for secure connection to Linux-based server operating system
ABAP	HTTPS	44301 & 44300	Used for access of a local web browser to appliance (Fiori Launchpad of SAP S/4HANA)
ABAP	SAP GUI	3200	Used for access of local SAP GUI to appliance
ABAP	TCP	3300	Used for connection of ABAP Development Tools (Eclipse-based) to SAP S/4HANA ABAP repository
ABAP	TCP	30215	Used for connection of SAP HANA Studio to HANA DB
JAVA	SSH	22	Used for secure connection to Linux-based server operating system
JAVA	HTTPS	50001	Used for access to SAP NetWeaver Administrator and other web-based J2EE applications
BIP	SSH	22	Used for secure connection to Linux-based server operating system
BIP	HTTP	8080 & 6400	Used for HTTP connection to BI platform
WIN	RDP	3389	Used for access from MS Windows remote desktop connection

* JAVA = SAP NetWeaver 7.50 AS JAVA incl. ADS

ABAP = SAP NetWeaver 7.51 AS ABAP incl. SAP S/4HANA

BIP = SAP BusinessObjects BI Platform 4.2

WIN = MS Windows Remote Desktop

Be aware that creating your instances in the public zone of your cloud computing platform is convenient but less secure than providing it within your corporate network.

If you want to tighten the security, open as few ports as needed (e.g. only port 22 (SSH) for Linux-based solutions and port 3389 (RDP) for the Windows remote desktop). In addition, we also recommend that you limit the access to your instances by defining a specific IP range in the Access Points settings, using [CIDR notation](#).

The more complex but also more secure alternative to public Internet is to set up a virtual private cloud (VPC) with VPN access, which is described in [this tutorial on SCN](#).

You must change the initial user passwords provided by SAP when you log onto the system for the first time.

Note that when using **HANA based appliances**, HANA systems are not installed individually but **cloned from a template system**. Because of this cloning process, the existing root keys are cloned. For more information, see this [SAP Note 2134846 - HANA encryption key handling during system cloning](#).

For more information about security vulnerabilities, see this [community page](#).

5 Solution Provisioning in SAP Cloud Appliance Library

If you have a user in SAP Cloud Appliance Library, you need to meet the following prerequisites before starting to use the SAP Cloud Appliance library:


Cloud Provider Configurations

You have a valid account in one of the cloud providers supported by SAP Cloud Appliance Library. If you already have an active cloud provider account, you can proceed directly with the next section. Otherwise, navigate to the cloud provider home page and sign up.

For more information about the supported cloud providers, see the [FAQ page](#) or this [YouTube playlist](#).

Navigate to SAP Cloud Appliance Library

Open the SAP Cloud Appliance Library in your Web browser using the following link: <https://cal.sap.com>

For more information about how to use solutions in SAP Cloud Appliance Library, see the official documentation of SAP Cloud Appliance Library (choose [Support](#) → [Documentation](#) link and choose  (expand all) button to see all documents in the structure). You can also use the context help in SAP Cloud Appliance Library by choosing the [Help](#) panel from the right side.

6 Appendix

6.1 Installed Technical Component Details

6.1.1 SAP NetWeaver 7.52 application server ABAP incl. SAP S/4HANA 1709

Component	Release	SP Level	Support Package	Short Description of component
SAP_BASIS	752	0	-	SAP Basis Component
SAP_ABA	75C	0	-	Cross-Application Component
SAP_GWFND	752	0	-	SAP Gateway Foundation 7.40
SAP_UI	752	0	-	User Interface Technology 7.40
ST-PI	740	6	SAPK-74006INSTPI	SAP Solution Tools Plug-In
SAP_BW	752	0	-	SAP Business Warehouse
UIBAS001	300	0	-	UI for Basis Applications 1.0
MDG_FND	802	0	-	MDG Foundation
S4FND	102	0	-	Foundation 102
MDG_APPL	802	0	-	MDG Applications
MDG_UX	802	0	-	MDG Additional User Interface
S4CORE	102	0	-	S4CORE
SAP_HR	608	42	SAPKE60842	Human Resources
SAP_HRCAE	608	42	SAPK-60842INSAPHRCAE	Subcomponent SAP_HRCAE of SAP_HR
SAP_HRCAR	608	42	SAPK-60842INSAPHRCAR	Subcomponent SAP_HRCAR of SAP_HR
SAP_HRCAT	608	42	SAPK-60842INSAPHRCAT	Subcomponent SAP_HRCAT of SAP_HR
SAP_HRCAU	608	42	SAPK-60842INSAPHRCAU	Subcomponent SAP_HRCAU of SAP_HR
SAP_HRCBE	608	42	SAPK-60842INSAPHRCBE	Subcomponent SAP_HRCBE of SAP_HR
SAP_HRCBG	608	42	SAPK-60842INSAPHRCBG	Subcomponent SAP_HRCBG of SAP_HR
SAP_HRCBR	608	42	SAPK-60842INSAPHRCBR	Subcomponent SAP_HRCBR of SAP_HR
SAP_HRCCA	608	42	SAPK-60842INSAPHRCCA	Subcomponent SAP_HRCCA of SAP_HR
SAP_HRCCH	608	42	SAPK-60842INSAPHRCCCH	Subcomponent SAP_HRCCH of SAP_HR
SAP_HRCCL	608	42	SAPK-60842INSAPHRCCCL	Subcomponent SAP_HRCCL of SAP_HR
SAP_HRCCN	608	42	SAPK-60842INSAPHRCCN	Subcomponent SAP_HRCCN of SAP_HR

Component	Release	SP Level	Support Package	Short Description of component
SAP_HRCCO	608	42	SAPK-60842INSAPHRCCO	Subcomponent SAP_HRCCO of SAP_HR
SAP_HRCCZ	608	42	SAPK-60842INSAPHRCCZ	Subcomponent SAP_HRCCZ of SAP_HR
SAP_HRCDE	608	42	SAPK-60842INSAPHRCDE	Subcomponent SAP_HRCDE of SAP_HR
SAP_HRCDK	608	42	SAPK-60842INSAPHRCDK	Subcomponent SAP_HRCDK of SAP_HR
SAP_HRCEG	608	42	SAPK-60842INSAPHRCEG	Subcomponent SAP_HRCEG of SAP_HR
SAP_HRCES	608	42	SAPK-60842INSAPHRCES	Subcomponent SAP_HRCES of SAP_HR
SAP_HRCFI	608	42	SAPK-60842INSAPHRCFI	Subcomponent SAP_HRCFI of SAP_HR
SAP_HRCFR	608	42	SAPK-60842INSAPHRCFR	Subcomponent SAP_HRCFR of SAP_HR
SAP_HRCGB	608	42	SAPK-60842INSAPHRCGB	Subcomponent SAP_HRCGB of SAP_HR
SAP_HRCGR	608	42	SAPK-60842INSAPHRCGR	Subcomponent SAP_HRCGR of SAP_HR
SAP_HRCHK	608	42	SAPK-60842INSAPHRCHK	Subcomponent SAP_HRCHK of SAP_HR
SAP_HRCHR	608	42	SAPK-60842INSAPHRCHR	Subcomponent SAP_HRCHR of SAP_HR
SAP_HRCHU	608	42	SAPK-60842INSAPHRCHU	Subcomponent SAP_HRCHU of SAP_HR
SAP_HRCID	608	42	SAPK-60842INSAPHRCID	Subcomponent SAP_HRCID of SAP_HR
SAP_HRCIE	608	42	SAPK-60842INSAPHRCIE	Subcomponent SAP_HRCIE of SAP_HR
SAP_HRCIN	608	42	SAPK-60842INSAPHRGIN	Subcomponent SAP_HRCIN of SAP_HR
SAP_HRCIT	608	42	SAPK-60842INSAPHRGIT	Subcomponent SAP_HRCIT of SAP_HR
SAP_HRCJP	608	42	SAPK-60842INSAPHRJJP	Subcomponent SAP_HRCJP of SAP_HR
SAP_HRCCKR	608	42	SAPK-60842INSAPHRCKR	Subcomponent SAP_HRCCKR of SAP_HR
SAP_HRCCKW	608	42	SAPK-60842INSAPHRCKW	Subcomponent SAP_HRCCKW of SAP_HR
SAP_HRCCKZ	608	42	SAPK-60842INSAPHRCKZ	Subcomponent SAP_HRCCKZ of SAP_HR
SAP_HRCMX	608	42	SAPK-60842INSAPHRCMX	Subcomponent SAP_HRCMX of SAP_HR
SAP_HRCMY	608	42	SAPK-60842INSAPHRCMY	Subcomponent SAP_HRCMY of SAP_HR
SAP_HRCNL	608	42	SAPK-60842INSAPHRCNL	Subcomponent SAP_HRCNL of SAP_HR
SAP_HRCNO	608	42	SAPK-60842INSAPHRCNO	Subcomponent SAP_HRCNO of SAP_HR
SAP_HRCNZ	608	42	SAPK-60842INSAPHRCNZ	Subcomponent SAP_HRCNZ of SAP_HR
SAP_HRCOM	608	42	SAPK-60842INSAPHRCOM	Subcomponent SAP_HRCOM of SAP_HR
SAP_HRCPH	608	42	SAPK-60842INSAPHRCPH	Subcomponent SAP_HRCPH of SAP_HR
SAP_HRCPL	608	42	SAPK-60842INSAPHRCPPL	Subcomponent SAP_HRCPL of SAP_HR
SAP_HRCPT	608	42	SAPK-60842INSAPHRCPPT	Subcomponent SAP_HRCPT of SAP_HR
SAP_HRCQA	608	42	SAPK-60842INSAPHRCQA	Subcomponent SAP_HRCQA of SAP_HR

Component	Release	SP Level	Support Package	Short Description of component
EA-HRCCZ	608	42	SAPK-60842INEAHRCCZ	Subcomponent EA-HRCCZ of EA-HR
EA-HRCDE	608	42	SAPK-60842INEAHRCDE	Subcomponent EA-HRCDE of EA-HR
EA-HRCDK	608	42	SAPK-60842INEAHRCDK	Subcomponent EA-HRCDK of EA-HR
EA-HRCEG	608	42	SAPK-60842INEAHRCEG	Sub component EA-HRCEG of EA-HR
EA-HRCES	608	42	SAPK-60842INEAHRCES	Subcomponent EA-HRCES of EA-HR
EA-HRCFI	608	42	SAPK-60842INEAHRCFI	Subcomponent EA-HRCFI of EA-HR
EA-HRCFR	608	42	SAPK-60842INEAHRCFR	Subcomponent EA-HRCFR of EA-HR
EA-HRCGB	608	42	SAPK-60842INEAHRCGB	Subcomponent EA-HRCGB of EA-HR
EA-HRCGR	608	42	SAPK-60842INEAHRCGR	Subcomponent EA-HRCGR of EA-HR
EA-HRCHK	608	42	SAPK-60842INEAHRCHK	Subcomponent EA-HRCHK of EA-HR
EA-HRCHR	608	42	SAPK-60842INEAHRCHR	Subcomponent EA-HRCHR of EA-HR
EA-HRCHU	608	42	SAPK-60842INEAHRCHU	Subcomponent EA-HRCHU of EA-HR
EA-HRCID	608	42	SAPK-60842INEAHRCID	Subcomponent EA-HRCID of EA-HR
EA-HRCIE	608	42	SAPK-60842INEAHRCIE	Subcomponent EA-HRCIE of EA-HR
EA-HRCIN	608	42	SAPK-60842INEAHRCIN	Subcomponent EA-HRCIN of EA-HR
EA-HRCIT	608	42	SAPK-60842INEAHRCIT	Subcomponent EA-HRCIT of EA-HR
EA-HRCJP	608	42	SAPK-60842INEAHRCJP	Subcomponent EA-HRCJP of EA-HR
EA-HRCKR	608	42	SAPK-60842INEAHRCKR	Subcomponent EA-HRCKR of EA-HR
EA-HRCKW	608	42	SAPK-60842INEAHRCKW	Subcomponent EA-HRCKW of EA-HR
EA-HRCKZ	608	42	SAPK-60842INEAHRCKZ	Subcomponent EA-HRCKZ of EA-HR
EA-HRCMX	608	42	SAPK-60842INEAHRCMX	Subcomponent EA-HRCMX of EA-HR
EA-HRCMY	608	42	SAPK-60842INEAHRCMY	Subcomponent EA-HRCMY of EA-HR
EA-HRCNL	608	42	SAPK-60842INEAHRCNL	Subcomponent EA-HRCNL of EA-HR
EA-HRCNO	608	42	SAPK-60842INEAHRCNO	Subcomponent EA-HRCNO of EA-HR
EA-HRCNZ	608	42	SAPK-60842INEAHRCNZ	Subcomponent EA-HRCNZ of EA-HR
EA-HRCOM	608	42	SAPK-60842INEAHRCOM	Subcomponent EA-HRCOM of EA-HR
EA-HRCPH	608	42	SAPK-60842INEAHRCPH	Subcomponent EA-HRCPH of EA-HR
EA-HRCPL	608	42	SAPK-60842INEAHRCPPL	Subcomponent EA-HRCPL of EA-HR
EA-HRCPT	608	42	SAPK-60842INEAHRCPPT	Subcomponent EA-HRCPT of EA-HR
EA-HRCQA	608	42	SAPK-60842INEAHRCQA	Subcomponent EA-HRCQA of EA-HR
EA-HRCRO	608	42	SAPK-60842INEAHRCRO	Subcomponent EA-HRCRO of EA-HR

Component	Release	SP Level	Support Package	Short Description of component
EA-HRCRU	608	42	SAPK-60842INEAHRCRU	Subcomponent EA-HRCRU of EA-HR
EA-HRCSA	608	42	SAPK-60842INEAHRCSA	Subcomponent EA-HRCSA of EA-HR
EA-HRCSE	608	42	SAPK-60842INEAHRCSE	Subcomponent EA-HRCSE of EA-HR
EA-HRCSG	608	42	SAPK-60842INEAHRCSG	Subcomponent EA-HRCSG of EA-HR
EA-HRCSI	608	42	SAPK-60842INEAHRCSI	Subcomponent EA-HRCSI of EA-HR
EA-HRCSK	608	42	SAPK-60842INEAHRCSK	Subcomponent EA-HRCSK of EA-HR
EA-HRCTH	608	42	SAPK-60842INEAHRCTH	Subcomponent EA-HRCTH of EA-HR
EA-HRCTR	608	42	SAPK-60842INEAHRCTR	Subcomponent EA-HRCTR of EA-HR
EA-HRCTW	608	42	SAPK-60842INEAHRCTW	Subcomponent EA-HRCTW of EA-HR
EA-HRCUA	608	42	SAPK-60842INEAHRCUA	Subcomponent EA-HRCUA of EA-HR
EA-HRCUN	608	42	SAPK-60842INEAHRCUN	Subcomponent EA-HRCUN of EA-HR
EA-HRCUS	608	42	SAPK-60842INEAHRCUS	Subcomponent EA-HRCUS of EA-HR
EA-HRCVE	608	42	SAPK-60842INEAHRCVE	Subcomponent EA-HRCVE of EA-HR
EA-HRCZA	608	42	SAPK-60842INEAHRCZA	Subcomponent EA-HRCZA of EA-HR
EA-HRGXX	608	42	SAPK-60842INEAHRGXX	Subcomponent EA-HRGXX of EA-HR
EA-HRRXX	608	42	SAPK-60842INEAHRRXX	Subcomponent EA-HRRXX of EA-HR
EA-PS	802	0	-	SAP Enterprise Extension Public Services
ECC-SE	802	0	-	ECC-SE
ERECRUIT	802	0	-	E-Recruiting
FI-CAX	802	0	-	FI-CA Extended
INSURANCE	802	0	-	SAP Insurance
IS-H	802	0	-	SAP Healthcare
IS-M	802	0	-	SAP MEDIA
IS-OIL	802	0	-	IS-OIL
IS-PRA	802	0	-	SAP IS-PRA
IS-PS-CA	802	0	-	IS-PUBLIC SECTOR CONTRACT ACCOUNTING
IS-UT	802	0	-	SAP Utilities/Telecommunication
LSOFE	802	0	-	SAP Learning Solution Front-End
GBX01HR	600	6	SAPK-60006INGBX01HR	FIORI X1 HCM
GBX01HR5	605	3	SAPK-60503INGBX01HR5	FIORI X1 HCM
SRA004	600	10	SAPK-60010INSRA004	Create Travel Request OData Integration
UIAPFI70	500	0	-	UI SFIN
UIS4HOP1	300	0	-	UI for S/4HANA On Premise
UIX01CA1	200	4	SAPK-20004INUIX01CA1	UI for Cross-Applications

Component	Release	SP Level	Support Package	Short Description of component
BSNAGT	200	2	SAPK-20002INBSNAGT	BSN AGENT
MSGPMCON	200	2	SAPK-20002INMSGPMCON	msg.PM Connection
PERSONAS	300	5	SAPK-30005INPERSONAS	PERSONAS - SAP GUI PERSONALISATION
ST-A/PI	01S_731	2	SAPKITAB9S	Servicetools for SAP Basis 731

6.1.2 SAP NetWeaver 7.50 application server JAVA with Adobe Document Services installed

Product Name	Name	Version	Vendor	Description
SAP NETWAVER J2EE	7.50	04	sap.com	SAP NETWEAVER 7.5: Adobe Document Services
SAP NETWAVER J2EE	7.50	04	sap.com	SAP NETWEAVER 7.5: Application Server Java

6.1.3 Windows Remote Desktop

- ABAP Development Tools
- BW Modeling Tools
- SAPUI5 Tools
- SAP GUI for Windows
- SAP BusinessObjects DesignStudio Client
- SAP Lumira Desktop edition

6.1.4 SAP BusinessObjects BI Platform 4.2

- SBOP BI PLATFORM 4.2 SP04 SERVER LINUX (64B)
- SAP Lumira Server for BI Platform 1.31 Linux (64B)
- SP04 for DESIGN STUDIO BIP ADD ON 1.6



www.sap.com/contactsap

© 2017 SAP SE or an SAP affiliate company. All rights reserved.
No part of this publication may be reproduced or transmitted in any form or for any purpose without the express permission of SAP SE or an SAP affiliate company.

The information contained herein may be changed without prior notice. Some software products marketed by SAP SE and its distributors contain proprietary software components of other software vendors. National product specifications may vary. These materials are provided by SAP SE or an SAP affiliate company for informational purposes only, without representation or warranty of any kind, and SAP or its affiliated companies shall not be liable for errors or omissions with respect to the materials. The only warranties for SAP or SAP affiliate company products and services are those that are set forth in the express warranty statements accompanying such products and services, if any. Nothing herein should be construed as constituting an additional warranty. SAP and other SAP products and services mentioned herein as well as their respective logos are trademarks or registered trademarks of SAP SE (or an SAP affiliate company) in Germany and other countries. All other product and service names mentioned are the trademarks of their respective companies. Please see www.sap.com/corporate-en/legal/copyright/index.epx for additional trademark information and notices.